

FRANK BROWN –JOURNEYMAN PAINTER

From Ripley to Rothesay



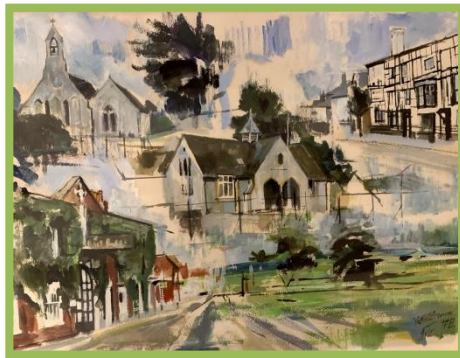
NEW EXHIBITION AT RIPLEY MUSEUM

FROM 24TH FEBRUARY

EVERY SATURDAY 10-12 AND BY APPT with the CURATOR 01483 728546

Kindly sponsored by Ewbank's Auctions

Send and Ripley History Society are proud to be mounting a special exhibition to showcase the work of locally born artist, Frank Brown who, from a modest background attended the Royal Grammar School and then the Slade School of Fine Art. He devoted much of his career teaching, both back at the Royal Grammar but also at Send Detention Centre and some local special schools.



He had several one man shows and painted the majority of his work in his tiny studio in Ripley. An outstanding equine artist, he had a show at the 1977 Derby and many of his works were sold both home and abroad. His work is diverse and the exhibition includes some of his multi image works of musicians, including Eric Clapton as well as fascinating interpretations of historical events. Frank found time to paint many local commissions and family paintings for many Ripley locals. His impressive work 'They did not Fight in Vain' hangs on the wall of the Royal British Legion.

In 2007 Frank and his wife Jean moved to the Isle of Bute, where they still live. We are including photographs of some of the lovely paintings he has completed there, which demonstrate his love of the island and the people of Bute. We look forward to welcoming you to our special, little museum (postcode GU23 6AF – behind Victory House). Please contact the Curator, Clare McCann for more information.

