



RIPLEY & SEND Matters

Autumn 2023

www.ripleyandsendmatters.org.uk

**A NOT FOR PROFIT MAGAZINE PRODUCED AND
DISTRIBUTED BY VOLUNTEER RESIDENTS
ISSUE NO. 122**

Useful Numbers

All telephone numbers given throughout this publication are under the Code 01483 unless they are mobile numbers beginning with a 0.

Ripley Councillors & Parish Council

Guildford Borough - Colin Cross 224107
Surrey County - Colin Cross 224107
Ripley Parish Clerk - Ruth Harrison 224847

E-mail: clerk@ripleyparishcouncil.gov.uk

Web: ripleyparishcouncil.gov.uk

Send Councillors & Parish Council

Guildford Borough - Susan Parker 203167
Guildford Borough - Margarida(Guida)Esteves
Surrey County - Robert Hughes

Send Parish Clerk - Nichola Mair 479312

E-mail: clerk@sendparishcouncil.gov.uk

Web: sendparishcouncil.gov.uk

Guildford Borough Council 505050
Surrey County council 518800
SCC Call centre (Highways etc) 03456 009 009
Local Police 101
Villages Medical Centre 226330
Boots Pharmacy 222162
Ripley Good Neighbours 210007
Send Help 225255
Hospitals - RSCH inc. Farnham Road 571122
Recycling hotline 445084
Dog line 505050

RIPLEY & SEND Matters

This magazine is produced and published by Ripley & Send Community Publishing Association an organisation of most of the clubs and societies of Ripley and Send. It is distributed free of charge in the Ripley, Wisley and Send area.

The Production Team

Editor Andy James:

randsmatters@icloud.com

Deputy Editor - Alan Sandell:

alan@sandell.com

Distribution - Ripley

Jennie Cliff 224051

Send

Jean Sandell 222903

Secretary

Jan Carter 224221

Committee: Mike Baker,
Jean Turner, Janet Manktelow,
Rowland Cornell

Ripley & Send Matters is copyright
2023 of Ripley & Send Community
Publishing Association,

Printed by BISHOPS PRINTERS
023 9233 4900

Next Issue...

Please email your news or publicity material to me by 23rd October, for the next edition due out 1st of December. Please note, I may have to edit your material or even leave your item until a later edition. I may take time responding to your email in between issues. However if you have items between editions that are urgent, please email alan@sandell.com so they can go onto the website:

www.ripleyandsendmatters.org.uk

A PDF edition of the magazine is also now available to view on the website.

Hello Dear Residents,

As I write, there is torrential rain in mid August. What a year we have had weather wise. From the driest winters to the wettest summers!

With my Ripley Business Association hat on I wanted to apologise for having to cancel this years Parish day on the green. Rest assured after 9 months of organising this was the last thing the committee wanted. Mainly this was due to the forecast in adverse weather conditions, with thunderstorms and rain all day. After many discussions with parish councillors and all the stakeholders involved we had no choice but to cancel. This event was to funded by your local businesses as a way of giving back to the community that support the many independent businesses in Ripley and beyond. We simply could not afford to spend our members money on an event that was forecast to be a washout. Here is to a bigger, better dryer event next year on the green!

Both villages have had a lot happening these last few months from both Villages celebrating for the Coronation, Send Open Gardens (see centre pages) and new craft groups orgainising get togethers. With that in mind we have many things to look forward to this Autumn too, From the legendary Ripley Bonfire to Horticultural talks from our gardening societies in both villages and of course we just need to blink and both villages will commence decorating for this years festive season (I won't use the actual word until next issue!).

Alan Sandell has now been appointed Deputy Editor, so he can help me with some of the more tricky technical things in brining this publication together.

I have had some lovely pictures sent in for this issue, please keep these coming for the December issue. We can now just hope for a fine and warm September to make up for our British Summer so far.

Happy Reading, Until next Time.

Andy James

Editor

In This Issue...

New Parish Councillors	P 5-7
Send Scouts	P 14
Anne Haynes Chairty	P 39
Coronation Party Fundraising	P 46

Free valuations 9am-5pm
every weekday

Ewbank's



Surrey and Hampshire's Premier Antique and Specialist Auctioneers



Jewellery, Watches & Coins: 20 September

Silver & Fine Art: 21 September

Antiques, Books, Clocks & Antique Furniture: 22 September

Retro Video Games & Consoles: 28 September

Cars, Motorbikes & Automobilia: 29 September

Pre-loved, Vintage & Antiques inc. Silver: 4 October

Vintage Posters: 6 October

Trading Cards: 13 October

Interiors & Modern Design: 26 October

Contemporary Art & Modern British Pictures: 26 October

Vintage Fashion: 27 October

Pre-loved, Vintage & Antiques inc. Silver: 1 November

Vintage Posters: 3 November

Toys & Models: 22 November

Entertainment & Memorabilia: 23 & 24 November

info@ewbanks.co.uk 01483 223101 www.ewbanks.co.uk

Burnt Common Auction Rooms, London Road, Send, GU23 7LN



MEET THE TEAM

The Parish Council is the government body closest to all of us as residents. We're here to do all we can to serve the Ripley community.

From left to right, Cllr Paddy MacLaughlin joined RPC this May. Paddy is an engineer, and is particularly passionate about the local walking and cycling routes. Cllr Caroline Bimson also joined in May. Caroline has two kids who volunteer locally and Caroline felt it was about time she gave back as well. Cllr Rowland Cornell joined the parish council in 2021, having lived and worked in the village all his life. He represents the village on the board of trustees of the local Anne Haynes Charity. Cllr Peter Shoesmith was elected in 2019. He is a local beekeeper and Chairman of Ripley Cricket Club. Software developer Cllr Ian Baker also joined RPC in May and is widely known to have one of the best Christmas lights displays in the parish. Cllr Richard Ayears has been a member since 2011, although he was a member back in 1994, and is this year's Chairperson. Cllr Sarah Gill joined in 2021 and is passionate about making a difference (and David Bowie). Ruth Harrison is the council's new Clerk & Responsible Financial Officer. She loves Ripley's community and countryside, growing and cooking food and is happiest when up a mountain. Jess Caine is the council's new Assistant Clerk. She has a keen interest in genealogy and history. The community recently helped Jess find her missing cat Apollo!

WE'RE UPDATING OUR COMMUNICATIONS

We've resolved to reach out to the community on a wider scale. We will be publishing literature more frequently in this magazine to help keep everyone in the know. We are reviewing social media and our website. Planning, environment, highways, events, funded projects and signposting will be prioritised, so you can keep up with the local happenings! Sign up for our bi-weekly newspaper The Ripley Reporter via ripleyparishcouncil.gov.uk where we list all planning applications and other news that might pertain to our local community.

WISLEY AIRFIELD UPDATE

We are now approaching what could be the final word on whether development can go ahead at the Former Wisley Airfield. Ripley Parish Council has objected to the proposals at every possible stage, representing the majority viewpoint of the parish. We are now going into the Planning Inquiry as joint participants with our colleagues at Send Parish Council, and we will continue to fight for what's best for our communities.

TRAFFIC CALMING MEASURES ON RIPLEY HIGH STREET

We've all been getting used to living with the M25 Junction 10 works for several months now despite the traffic congestion, vast open spaces where trees have been cleared and diversions but there is some good news for Ripley residents. The Parish Council has been working with National Highways and Surrey County Council to agree on the traffic mitigation works required by the Development Consent Order (DCO), which must be implemented during the lifetime of the project. The draft scheme, which is designed to deter drivers from using the B2215, includes a reduced speed limit to 20mph along the length of the High Street, a series of speed tables and a new raised Pelican crossing being installed near the Village Hall. The draft scheme must be agreed upon by the relevant parties prior to the new Wisley Lane opening in February next year. Should you need more detail please pop into the council office.

Linked to the Junction 10 scheme, Ripley Parish Council is working with Surrey County Council to develop a wider scheme to reduce traffic speed throughout the parish. This will include a 20mph speed limit in Georgelands, Wentworth Close, Newark and Rose Lanes, and 30 mph speed limits on Portsmouth Road, Polesden Lane and Grove Heath Road. These speed limit changes will be assisted by a number of physical traffic calming measures which will include speed tables. We hope that this scheme can be implemented at the same time as the National Highways traffic mitigation works however Surrey has said it is currently unable to fund these safety measures so councillors will continue in our efforts to pressure Surrey to find the funding and complete these safety measures for our residents and visitors.

YOUR NEXT OPPORTUNITY TO MEET US

We need to know what you think so that we can best represent you. Our next full council meeting will be on Wednesday 20th September at 7pm in Victory House.



SEND PARISH COUNCIL

Hello Everyone

I have the honour to write my first article to you as Chairman of Send Parish Council (SPC) following my election to the role at the Council's Annual General Meeting (AGM) in May 2023.

For those of you who don't me, I am Julia Osborn and I have served as a Parish Councillor for the past eight years. I have held a number of posts in the Council, including Vice-Chairman of the Send Neighbourhood Plan Steering Group and Vice-Chairman of the Planning Committee. I represented Send and the battle of all our villages against overdevelopment, on behalf of Save Send Action Group, at the Local Plan Examination in Public (held between 2018-19); and since 2019 I have been representing Parish Councils across the Borough at Guildford Borough Council, as Parish member to the GBC Corporate Governance and Standards Committee.

I now turn to the key changes at SPC since May 2023. Following an uncontested election, SPC had six Councillors, Cllr Margaret Bruton, Cllr Carolin Goehler, Cllr Janet Manktelow, Cllr Julia Osborn, a new member Cllr Mark Shields, and one other rather intriguing recruit - Cllr Debbie Hurdle! Many of you will of course know that Debbie was Clerk to SPC until January 2022. SPC, therefore, appear to have made a little history in having a Clerk turn Cllr. It also shows the admiral dedication that Debbie gives to our village in stepping out of retirement to assist the Council once more. The Council was also pleased to co-opt to the Council Mr Andrew Sherman and Mr Andrew Robertson at its meeting in June. I am also extremely grateful to our Clerk Nichola Mair for her assistance in helping me assume the role of Chairman and for her perseverance through a challenging year without a deputy/ assistant. This is something we are hoping to soon redress. The Council also has one further vacancy for a Councillor, so please contact clerk@sendparishcouncil.gov.uk if you would be interested in joining us. Another point to note is that due to the elections, the Annual Parish Meeting took place a little later than usual in late May and the Chairman's address for the municipal year 2022-23 was given by Cllr Manktelow (as Vice-Chairman of the Council 2022-23). Residents will find a copy of this report included in this edition of the R&SM.

In the next edition, I will be updating you on the business of the Council since May. Until then please keep updated, if you are able to, by reading our monthly reports of meetings published on the village's Facebook page www.facebook.com/sendvillage

Julia Osborn

Chairman, Send Parish Council

CHAIRMAN'S REPORT SEND PARISH COUNCIL APM 2023

JUBILEE FAIR AND RECREATION GROUND

Perhaps the most memorable event in the village in June last year was the Jubilee Fair held on the Recreation Ground. It was a lovely day and many residents of Send attended. The Parish Council thanks Ripley and Send Rotary Club and Send Scouts for their dedication and energy in organizing the Fair. The Recreation Ground not only provides a central place to hold community events such as the Jubilee Fair, but is also a lovely area for villagers on which exercise and play throughout the year. To remind everyone the Recreation Ground was given to the people of Send by local benefactors just over 100 years ago to strengthen the health of the village community after World War 1. A charity was created to oversee the use and maintenance of the Rec and the Parish Council was appointed as Trustee. Over the years the Parish Council has made improvements to the Rec. by building a small pavilion, providing a public convenience, adding play equipment and adult gym stations whilst keeping the feeling of open space in the centre of the village. A couple of years ago Guildford BC awarded the Parish Council a Gold Award in recognition of the high standards on the Rec. The Parish Council has been given external funding to improve the Rec. In late 2021 a village survey was conducted to explore what changes you would like to see. Using the responses, a plan was produced. You will hear later about the progress of this project and from the architects who are working with the PC on it.

GRANTS

An important role of the Parish Council is to support the voluntary groups in the village. Each year the Council considers applications from any group in the village and makes grants which allow them to continue to help. Grants this year were made to:

- Send Help to go towards the cost of their 25th Birthday celebration which brought together clients for an afternoon of fun and singing.
- Send Scouts to support a scout from the village to attend an international Jamboree.
- Send Guides to purchase a range of essential equipment.
- Ripley and Send Rotary Club to help with the cost of the Jubilee Fair.

CEMETERY

You may have seen drilling equipment in the new cemetery on Send Hill and wondered what is going on. Over the past two years the PC has become aware that the ground water levels in the new cemetery have risen

dramatically, particularly in the winter months. With expert help the Council is monitoring the water levels and working towards improving the drainage issues.

TREE PLANTING

A pledge was made to plant 70 new trees in the village in recognition of the Queen's Jubilee. Over the year the Council asked for your views as to where the trees should be planted. A plan was drawn up and planting carried out in autumn 2022 and spring 2023.

OTHER PROJECTS

Other village projects this year include:

- Two new bus shelters in Send Marsh which are to be replaced soon
- A survey of Bush Lane Woodland to improve the management of the area

The Council continues to identify sustainable projects that improve the village environment.

COUNCIL TAX

The Council continues to make careful and pragmatic financial decisions and has been able to maintain and not increase the current level of Council tax for residents.

PLANNING

The PC continues to respond robustly to planning applications (large and small) which come up in the parish. Recently the PC has objected strongly to a variation in the conditions of the Garlicks Arch development.

CORONATION

The coronation of King Charles III took place on 6th May and the May Fair on the 8th was a celebration of this event. The community joined together with street parties and decorating the village with bunting etc.

PARISH COUNCILLORS

Thanks go to all the Councillors for their hard work and commitment these past years. Special thanks go to 5 Councillors who stepped down this May – Phil Beddoes, Alex Beames, Trevor Deacon, Pat Oven and Arthur Thomas and to Chris Heath earlier in the year.

ELECTIONS

On 4th May the local council elections took place and 6 parish councillors were elected. The Parish Council has 3 vacancies and hopes it can co-opt some new people to fill the vacancies at the June Council meeting.



CLAREMONT FAN COURT SCHOOL

'A school where you can be you'

An independent, co-educational school for 2^{1/2}- 18 year olds, set in 100 acres of greenbelt in the heart of Surrey. Book on to an open day at:

claremontfancourt.co.uk



Jepsen & Co. Solicitors

Your local solicitor providing efficient and personal service

- Residential conveyancing
- Wills
- Lasting Powers of Attorney
- Probate

Please contact Mrs Rica Jepsen
65 East Lane, West Horsley
Surrey KT24 6LR

Tel: 01483-281720
Email: rica@jepsen-law.co.uk

Rosie Haxton

MCSP, HCPC, GRAD DIP PHYS

**Chartered
Physiotherapist**

*Recognised by Health Insurance
Companies*

**21 Bramble Way
Sendmarsh
Surrey
GU23 6LL**

07986158001

**Experienced in:
Back, Neck and Joint Pain
Sports Injuries
Hand Therapy**

CHURCHES

The Parish Church of St Mary the Virgin, Send
Tony Shutt, Priest-in-charge

In Send Church hangs an epic poster, titled 'Vicars of Send', sub-titled from 1600-1875 'Vicars of Send and Ripley'. John de Crandall 1289 heads the list. From obscurity to obscurity a calligraphic ladder falls in three flights through seven centuries. In 61st place, on the bottom rung, me, 1995. During 28 years in Send, my priestly predecessors have accompanied me, not only as a list of names, but in benign hauntings. They have come attentively in the churchyard while searching graves, wistfully by the Wey when counting damselflies, idly on the paths admiring ancient trees, toasting in the pubs supping beer. My former colleagues have robed and disrobed with me in the vestry, inked entries into the parish registers, poured water into the font and upon infants, handled holy mysteries at the altar, and stood speechless in bugled November air. They've smirked knowingly while we've waited for a bride in the porch, and joshed me after I've misspoken nonsense or heresy in the pulpit. They have aimed my hand as I've thrown soil into graves and jested as I've acted the fool in school. They have sat with me in mournful kitchens listening grimly to hell. They've added silent "Amens" to agonised prayers. Most recently, they have flicked straws from my hair. At first I felt disturbed and admonished by the monstrous company of my antecedents, overawed by what I presumed was their superior faithfulness, energy, piety and devotion. But I mellowed in my self-deprecation. As foxing on a page, the spots of their humanity and failure became ever more apparent. Weirdly, comfortingly, I felt I discovered common ground in our pastoral, ecclesiastical and secular concerns. "One generation shall praise thy works to another, and shall declare thy mighty acts," wrote the Psalmist of their God. So it continues. Now it is my time to leave and create a pause, a vacancy, a line break – air in the ladder. Retirement as a parish priest is imminent. Thank you to everyone, ghostly or not, who has stood by and encouraged me and supported my family with so much love and patience. We will cherish the memories of our friendships here, among both the quick and the dead. A farewell service is planned in St Mary's Church on 24 September. All welcome.

Meanwhile, may God bless everyone who comes and goes in Send and Ripley. Tony



Sunday Services

(See sendparishchurch.co.uk for monthly details.)

8.00am Holy Communion 1st and 3rd
Sundays of the month

10.30am Holy Communion

Please contact the churchwardens during the vacancy if you need to make arrangements for baptism, marriage or funerals etc. or to use the church.

CHURCHES

Parish Church of St. Mary Magdalen, High Street, Ripley

Website for all updates and information: <http://www.ripleychurch.org.uk>

Email: churchwardens@ripleychurch.org.uk

We are delighted to announce that the Revd Anna Norton has been appointed Priest-in-Charge of the parishes of Ripley and Ockham with Hatchford & Downside.

She will be installed by Andrew Watson, the Bishop of Guildford, on Tuesday 12 September 2023 in All Saints' Church Ockham at 7.30pm. Her first Sunday service will be in Ripley church on Sunday 12th September to which all are very welcome. Anna is a former English and Drama teacher and is currently a curate at St Peter's, Chertsey. She and her family will move into the Ripley vicarage as she takes up her appointment.

Many of you will be aware that we have a Summer appeal for financial support for the church. We are very grateful to those who have made financial donations. Aside from some small support for heating last winter, each church has the responsibility to maintain its own finances, including for the upkeep of the historic church building. We are therefore immensely grateful to those who have made donations. In order to thank you in person, and for doners to meet Rev Anna, we are organising a tea and cakes event 3-4pm on Sunday 24th September. If you would like to attend, please email churchwardens@ripleychurch.org.uk. If you wish to make a donation, thank you in advance! Please see <http://www.ripleychurch.org.uk> or contact the churchwardens for alternative ways to give.

Last year, our church recorded 2708 adult attendances and 524 child attendances, at a variety of services and life events. In addition, we are aware of a significant number of unrecorded attendances as people access the church as visitors or for personal reflection. With Rev Anna's arrival, we are excited at the prospect of a new chapter in the life of Ripley church and to serving its community.

Please feel welcome. Anyone can come into the church which is usually open 9.30am-4pm.

- There is a free book swap at the back of church – open to all.
- We continue to collect for the foodbank – a box is at the back of church.

If you are interested in being baptised or married in the church or hiring the church room, please email churchwardens@ripleychurch.org.uk.

CHURCHES

Send Evangelical Church

Website – www.sendec.org

Facebook – facebook.com/sendec

Twitter - @sendevangelical

YouTube channel - www.youtube.com/@SendEvangelicalChurch

Assistant Pastor – Kurt Holmgren – kurt@sendec.org

Sunday morning services – 10.30am

We meet for morning worship every Sunday from 10.30am. The service lasts from 75-90 minutes, and includes songs (a mixture of old and new), Bible readings, prayers, a kids' talk, and a sermon. Everyone is welcome, whether you've been to church a thousand times or never before! We love having visitors, and over the years, many visitors have become faithful regulars. There is no dress code, you won't be out of place in jeans and t-shirt.

If you are not able to attend in person, you can watch our morning service livestream at www.youtube.com/@SendEvangelicalChurch

We have a Sunday school (Treasure Hunters) which on average runs three Sundays a month during the main morning service – email our assistant pastor Kurt for more details.

We also have an informal crèche available in our adjacent hall for those with babies and toddlers.

You are also welcome to join us for our evening services at 6.30pm which take place most Sundays.

Other activities –

Our toddler group Little Lambs takes place on Thursday mornings from 10:00 - 11:30 during term time at our church. It is a relaxed group where parents can enjoy refreshments and conversation with other parents while their children have the opportunity to enjoy a wide range of toys and activities, as well as snacks. It runs on Thursday mornings For more information please email Val at littlelambs@sendec.org.

If you have teenagers, we would love them to join us on Friday evenings from 7.30-9pm, during term-time. We have a lot of fun each week playing a range of games (including table-tennis and pool), eating tasty snacks, taking part in Bible-based group discussions and going on outside trips like bowling, Laser Quest etc. Again, email our pastor Kurt for more info.

We keep our website up to date with all of our latest activities so do visit us at www.sendec.org

Send Scouts

Last year was a great year for 1st (St Mary's) Scouts and we're looking forward to another exciting year of challenges going forward. Thanks to everyone who enjoyed the May Fair and the fireworks, both events raising crucial funds for our Group, enabling us to take Sections on camp, set up a new (and very popular!) Squirrels Section for 4-6 year olds and run our fantastic programme, including camp fires, kayaking and village walks. Our Cubs were excited to meet Liam Heath, local boy and four-times Olympic medalist in the kayak sprint event. After inspiring the Cubs to reach for the stars, he then watched with great grace as they repeatedly fell into the canal with shrieks!

We are constantly in awe of our volunteers, with George having volunteered for over 50 years and Cheryl for almost 30, but we say goodbye this year to two key members: Max, Beaver leader and latterly Cub leader, who steps down from this role after 6 amazing years, and Tony Shutt, honorary Scout and humble teacher of so many over the past nearly 30 years. The Group is entirely run by volunteers and the children are so lucky to have them!



Our opening times:
Thursday 10 - 5
Friday 10 - 5
Saturday 10 - 5
Sunday 11 - 4
Until Christmas



Opening times may vary, so it's best to check our website for updates, just go to The Old Pharmacy page to find out more!

The Old Pharmacy, High Street, Ripley, Surrey, GU23 6BB

Lolapalooza, the luxury and vintage department store: a magical array of ever changing, exuberant and exceptional treasures. Explore our online rambling country house to find curated home accessories, fashion, and luxe lifestyle wares! We are also the creators of Lola's Leads, so you can say goodbye to unsightly extension cables.



Sign up to our Grapevine Gazette to get all the latest news about our exciting local events, workshops, secret sample sales, exclusive discounts and a first look at all our new products!

To sign up just visit our website or email us at lola@lolapalooza.co.uk! We are also available for shopping appointments outside of our opening hours! Just email ripley@lolapalooza.co.uk.

Shop Local - Eat Local - Stay Local - Love Ripley

WWW.LOLAPALOOZA.CO.UK

GET 10% OFF WITH CODE MATTERS10

@LOLAPALOOZALONDON @LOLAS_LEADS

We're building a community of handy people and makers of all kinds.
For more information check out our *WORK WITH US* page!

SEND BUSINESS CENTRE

Offices, Storage & Industrial units
to let on **flexible terms**

Friendly family run business

Super Fast 1 GB internet

Waterside views

www.sendbusinesscentre.co.uk

Tel: 01483 225617



Ebenezer Strict Baptist Chapel

Newark Lane, Ripley

Services held every Sunday 10.45am and 2.30pm



the
coffee
&
shop



Everyone Welcome!

3rd Monday of every month • 10am - 12 noon • Church Room, Send



Help for people in Send

Providing transport for:

- Medical appointments
- Shopping
- Chiropodist
- Dentist
- Hairdresser
- Social activities

...or even just tea and a chat

Whatever it is, just phone and ask

01483 225255

10:00am - 12 noon, Monday to Friday

Volunteers needed

Please phone for more information



The Villages
MEDICAL CENTRE

The Villages Medical Centre,

Send Barns Lane,

Send, Woking

Surrey.GU23 7BP

Tel:01483 226330

Fax:01483 225253

www.thevillagesmc.co.uk

We are always evaluating and reviewing how we support our patients to ensure they all receive the best possible care from every member of our team. So, it is very pleasing to report that a recent patient survey, conducted by the NHS, shows that 95% of our patients feel our GPs treat them with care and concern and 87% feel satisfied with the appointment days and times offered. This is great feedback and we hope to build on that performance going forward.

A recent information evening regarding NHS cancer screening programmes was well received. Those attending felt informed and reassured about what's involved and the benefits of breast, cervical, bowel and prostate screening. We hope that we allayed any fears and of course we encourage all patients to attend or take part in routine screening when invited, as we all know that early detection of cancers can save lives. Given the popularity of this event, we are looking to hold more evenings on different subjects in the coming months, so please watch this space.

It is always disappointing to have to raise this subject but we have seen an increase in the abuse our teams are facing. While we understand that coming to see a medical professional can be stressful and worrying, we have a zero tolerance policy when it comes to any aggressive or abusive behaviour or language used towards any member of our team. We will end telephone calls or face to face conversations with anyone who abuses our team and please note that we are able to request that patients are removed from our list. Obviously we are keen to avoid having to take such drastic measures and ask that everyone visiting our surgery treats our staff with respect.

Car parking remains a challenge and we would like to remind the community that our car park and our staff car park are private and for the sole use of patients, those visiting Boots pharmacy and our staff. Unfortunately both are being used regularly by people picking up and dropping off children at the local school. This leads to staff and patients being unable to park here and some patients have even missed appointments. And the frequency of this happening is increasing. Being late for, or missing appointments is hugely distressing for the patients concerned, wastes a significant amount of time for our clinicians and ultimately costs the NHS a lot of money. So with all that in mind, we will be

monitoring the car park and ask that people refrain from using them unless they are coming to the surgery or visiting Boots.

Moving on, prescriptions keep us very busy and we do our best to process the hundreds of requests we receive each week quickly and efficiently. To help us, please ensure you submit your requests when you have a 2 week supply of your medication remaining. This allows us time to approve the request and for your chosen pharmacy to dispense your medication in good time and avoids the distress of running out of your medication.

And finally, flu season is approaching. As soon as we have dates for our annual flu day and other flu clinics, we will send all eligible patients a text invitation. Please support our surgery by coming here for your flu vaccination. We look forward to seeing you. As ever, we would like to thank our patients and the local community for your continued support.

VILLAGES MEDICAL PRACTICE PPG

Together with the Practice we held an interesting Patient event on 5th July talking about the benefits of screening in the early detection of cancer and other diseases. Dr Nevin spoke about Breast Cancer, Dr Kilbee covered cervical cancer, Dr Ghouze bowel cancer and Dr Guard covered the detection and treatment for prostate cancer. Some of the figures on the benefits of screening were very surprising- for bowel cancer early detection can mean a survival rate of 93% whereas detection at a late stage means survival rate falls to less than 7%. At the end of the presentations patients had the opportunity to have an informal chat with the GP's. Watch this space as we hope to have more patient events in the future.

Do come along to the Farmers Market on 9th September, the PPG will have a stall again and you can find out who we are. Also you will be able to book your flu jab as well. We have a new name for our Facebook page -Villages PPG - check us out!

Kate Price - PPG Chair

**WEDNESDAY COFFEE MORNINGS
IN RIPLEY CHURCH ROOM
FROM 10AM - 12 NOON**



Come and meet your friends and make new ones - enjoy a cup of coffee or tea and a homemade cake.



Hopefully you are all as delighted as we are with the progress of your new Village Hall. The diamond pattern brickwork looks superb and will be a standout feature of the exterior design. We are very pleased to report that our builders, Buchanan and Son are doing a great job and are very professional in their site management and in their communications with us and with the architect Brian Hendry. It really is a team effort. Furthermore Ross Buchanan lives in Newark Lane so he definitely has a vested interest in making sure the build goes according to plan! The roof trusses will go up in the next few weeks and roofing should be completed by October. We remain on schedule for completion in April 2024.

It's fantastic to finally be able to walk through the different hall spaces, after contemplating the drawings so assiduously over the past 6 years. The main hall is very similar in size to our old hall but the second hall is a really great space with an outlook over the landscaped garden area and with a vaulted ceiling. All 3 halls will have kitchen facilities and will be able to be entirely independent of each other. We anticipate that once construction is complete and we have a proper car park again, then our village hall will be an extremely popular venue. It's not too early to start making enquiries for regular hires, one off events, children's parties or even weddings.

Please contact Trish at www.ripleyvillagehall.org.uk to discuss your needs.

In the meantime, don't forget that Victory House is available for hire and please do look at our website to check out what is available for you to join in or indeed to book the hall for your own Event.

Advertise your local business
Here
Email
randsmatters@icloud.com
Deadline is 24th October for
the Christmas Issue.



IBUILDERS UK LTD
WWW.IBUILDERS.UK

Email: info@ibuilders.uk

We are a Ripley based building contractor, specialising in all elements of residential building and refurbishment projects, including:-

- Extensions
- New builds
- Brickwork
- Patios
- Garden rooms/home offices
- Kitchen re-fits
- Bathrooms
- Flooring
- Plastering

Excellent references from recent projects available.

THE BEAUTY &
SKIN CLINIC

MAIN TREATMENTS INCLUDE:

- LINDA MEREDITH HYDRA FACIALS
- DERMA ROLLER FACIALS/SKIN PEN
 - ELEMIS FACIALS
 - WAXING
- GEL MANI & PEDIS
- BOTOX/FILLERS
 - LASER HAIR REMOVAL
 - 3D LIPO
- CELLULITE TREATMENTS
- SKIN PEELS
- SILK LASH EXTENSIONS
- MAKE UP

**Find us on Ripley High Street,
with free parking**

 [thebeautyandskinc](https://www.instagram.com/thebeautyandskinc)

 [the beauty & skin clinic](https://www.facebook.com/thebeautyandskinc)

www.thebeautyandskinc.com

Ripley High Street, Surrey GU23 6AZ

01483 222022

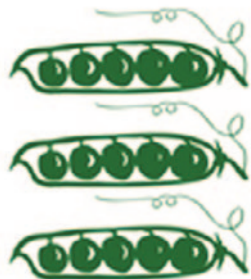


**DISTILLERS
OF SURREY**



www.distillersofsurrey.com

01483 222392 | hello@distillersofsurrey.com
Polesden Lane, Ripley, Surrey, GU23 6JX



Ripley Farmers' Market

SECOND SATURDAY OF EVERY MONTH 9AM TO 1PM
BUY FRESH LOCAL PRODUCE FROM SMALL TRADERS.

It's been an interesting summer weather wise no doubt everyone would agree. We held our large June Artisans' summer market on one of the hottest days of the year! Everyone was sweltering by 10am but we had 65 stalls, entertainment and plenty of visitors. With thanks to all our stallholders, guest stallholders and shoppers for supporting the event. Not forgetting the volunteers who brought it all together. There's a lot of planning beforehand as well as on the day. In fact each month that we hold the market, there's a whole host of people who give up their time for free to help out, do come and join us.

Now we're looking forward to autumn's cooler crisp days and our stallholders getting back to normal numbers. This is regularly in excess of 45 stalls all selling something different, locally produced and grown/assembled/baked or bottled by our traders. Many of our traders are award winners such as Greyfriars Vineyard won a Gold in WineGB23 awards for their NVCuvee. Wildcroft Dairy, Nordic Wellness Drink, Distillers of Surrey gin, Iain Spigs sausages, Ralph Wettach deli, Lorna's Indian Kitchen, Hilton Hams and the Tomato Stall all won Great Taste awards. Well done to them all from us.

So if you haven't been to Ripley Farmers' Market before, come along on the second Saturday of the month on Ripley Green between 9am and 1pm. And if you're a regular please keep on coming!



the bakery

FEED YOUR DAY

The Bakery Shop is one of the few surviving Craft Bakeries in Surrey, delivering handmade, freshly baked goods to our eight shops every day.

PRE-ORDER YOUR
FAVOURITE
LOAF OF BREAD!

DID YOU KNOW?
Fresh hot breakfast goods available daily

DID YOU KNOW?
We make our own sandwiches fresh everyday

DID YOU KNOW?
Our sausage rolls are made with locally sourced butcher's meat

DID YOU KNOW?
All bread, cakes and pastries are homemade by our Craft Bakers



ASHTEAD • BOOKHAM • BURPHAM
COBHAM • EAST HORSLEY
EFFINGHAM • RIPLEY • SHEPPERTON

thebakeryshop.co.uk

FIELDVIEW TAILORING

**Derek Hack
Tailor**

01483 224164

**3.Prews Cottages,
Tannery Lane, Send.**



**Phone for an appointment
For all your clothing alterations**



BROADWAY·BARN

www.broadwaybarn.com

01483 223200

Luxury Self-Catering and Bed & Breakfast



Extra special places to stay in the Village of Ripley

- Broadway Barn Grade II Listed 5-Star Gold Bed & Breakfast – Ensuite Bedrooms
- Broadway Cottage 4-Star – Bedroom, Bathroom, Sitting Room, Kitchen, Patio
- Broadway Villa 5-Star – 1-3 Ensuite Bedrooms, Sitting Room, Kitchen



Your Trusted Local Accountants

Hookins Accountants is a family run firm based in Ripley, Surrey, providing all aspects of accountancy and bookkeeping services.

Our Services:

- Business Tax
- Bookkeeping
- Company Accounts
- CIS
- Payroll
- VAT Returns

Get in touch with us today for more information:

 www.hookinsaccountants.com  peter@hookinsaccountants.com  01483 211 985

Jonathan Paints

All aspects of Pianting
Fully insured

07922 320960

01483 223616

73paintsjonathan@gmail.com

www.jonathanpaints.co.uk

Find me on Facebook and
Instagram.



moves
FITNESS

MONDAY

6:45-7:45PM

THE LANCASTER HALL
28 SEND ROAD
SEND, WOKING
GU23 7ET

TUESDAY

7-8PM

ALL SAINTS CHURCH HALL
564 WOODHAM LANE
WOKING
GU21 5SH

**MOVES FITNESS - SUPER
FUN FITNESS CLASSES!**

WITH NADIA

07732 494 094

www.movesfitness.com

nadia.badman@hotmail.co.uk

Advertise your local business
HERE...

Email
randsamtters@icloud.com by
the 23rd October for the
December Issue.

RIPLEY GOOD NEIGHBOURS



OPEN
MONDAY TO FRIDAY
10 A.M. - 12 NOON

01483 210007

WHAT DO WE DO?

We aim to offer any support a good neighbour might offer.

For example: Help with transport, shopping, collecting prescriptions, dog walking, and any other odd job, within reason!

WHO CAN USE RIPLEY GOOD NEIGHBOURS?

Anyone in the Ripley area - young and old alike. But please try to give us as much notice as possible so we can find a volunteer to help.

WHAT DO YOU HAVE TO DO?

Ring 01483 210007 and leave your name and telephone number. The Duty Officer will contact you as soon as possible during opening hours

When you speak to the Duty Officer just explain what help you need and when you need it. We will then try to find a volunteer and then let you know if we have found someone to help

WHAT DOES IT COST?

Help is free but if you can make a donation to help with transport costs we would appreciate it.

WOULD YOU LIKE TO BE A VOLUNTEER?

Just call 01483 210007 and we will give you details. Being on the list commits you to nothing as you can always say no if helping is inconvenient.

**SEND AND RIPLEY HISTORY
SOCIETY**

We are having a complete change of tack from our previous exhibition, the story of Newark Mill, to VILLAGE WEDDINGS. We try to look at the origins of wedding traditions and how they have changed.

On a local level, Send and Ripley are villages where generations of the same family have lived and married. The exhibition has photos from about 1870 onwards and in at least one case, three generations of the same family. The centre piece is a beautiful WWII dress made from parachute silk and we are indebted to Jackie Gibbs for loaning it and Miss Bush Bridal Boutique for helping with its presentation.

The exhibition will be on every Saturday from 10-12 until the end of October. Please get in touch if you would like to visit at any other time-
cricketshill@hotmail.com

**NEW EXHIBITION
RIPLEY MUSEUM**



VILLAGE WEDDINGS

CHANGING FASHIONS AND TRADITIONS

JULY 2023

Until OCTOBER 2023

EVERY SATURDAY MORNING

10-12

or by appt. call Clare 01483 728546

The museum is behind the new Ripley Victory House

GU23 6AF

Supported by Miss Bush Bridal Boutique

Evening meetings - Thursday at 7.30pm
All meetings free to members
£3 for non-members payable in advance/on entry
See our website wsnhs.wordpress.com

28 September 2023 WEST Horsley Village Hall

The Secret Life of Moths – illustrated talk by Peter Smith

Peter is a beekeeper, writer and a keen environmentalist with a special interest in pollinators and particularly the pollinator ‘night shift’ – our night flying moths. The hidden pollinator night shift comprises a surprisingly colourful group of insects, many of them with fascinating stories and histories. As an amateur entomologist Peter keeps the subject simple and engaging, uses common names and illustrates his talk with numerous images.

26 October 2023 on Zoom

Beaky Suckered Devil-Fish: Octopuses and their relatives – illustrated talk by Mark Carnall, Oxford University Museum of Natural History

Mark Carnall is the curator of non-insect invertebrates at the Oxford University Museum of Natural History. In this presentation he'll be talking about cephalopods - the mollusc class which includes nautilus, octopuses, ‘squid’ and a number of extinct forms. It will start with an introduction to the larger mollusc group then cover cephalopods in science and culture. How did the group evolve? How many tentacles does an octopus have? How do you sex a squid? Is their intelligence surprising? Can squid truly fly? Are they the ‘weeds of the sea’ or the future of food? Learn about this important but often misunderstood group of animals.

23 November 2023 in West Horsley Village Hall

7.00pm a short AGM followed by:

Joseph Banks and the Fine Art of Exploration, 1768-1814 – illustrated talk by Dr James Taylor, a former curator of paintings, drawings and prints at the National Maritime Museum, Greenwich. This talk features the artists and naturalists that travelled with Captains James Cook and Matthew Flinders to Australia, New Zealand and the South Pacific and shows their remarkable depictions of flora, fauna, people and places. Banks popularised the placement of artists aboard British voyages of discovery. His interest in art went well beyond ‘accuracy of drawing’ and it was used for promotional purposes.

RIPLEY Diary of Events 2023

Church Services are on the Church pages

September

3rd	Sat 2.30pm	Over 60's	Ripley School
Every	Monday 10-12	Coffee Morning	Church Rooms
9th	Sat 9-1	Farmers Market	Ripley Green
20th	Thurs 7pm	Parish Council	Victory House

October

1st	Sat 2.30pm	Over 60's	Ripley School
Every	Monday 10-12	Coffee Morning	Church Rooms
14th	Sat 9-1	Farmers Market	Ripley Green
17th	Thurs 7pm	Parish Council	Victory House

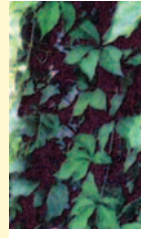
September

5th	Sat 2.30pm	Over 60's	Ripley School
Every	Monday 10-12	Coffee Morning	Church Rooms
11th	Sat 9-1	Farmers Market	Ripley Green
15th	Thurs 7pm	Parish Council	

GARDENSCAPE



- * Small family business
- * Garden Design
- * Specialising in Soft Landscaping and Shrubs
- * Maintenance
- *Turfing/Lawn Care
- *Lady gardeners available



All your gardening needs catered for

For an immediate response call - 07770 933764

33 Culverlands Crescent, Ash, GU12 6TD

Wills & Smerdon

Sales • Lettings • Management

Thinking of moving or just wish to get a value of your home? Then please contact the team at Wills & Smerdon for a FREE market appraisal from the property experts in your local community.



Email: enquiries@willsandsmerdon.co.uk

Telephone: 01483 224343

Website: www.willsandsmerdon.co.uk

Address: Aberdeen House, High Street, Ripley, GU23 6AQ



@willsandsmerdon

Send Open Garden Weekend - 2023 and beyond

For the second year running we had a successful Open Garden event, supported by Vision Engineering and Wills and Smerdon. Just short of £2000 was raised for a mix of local and Surrey based charities. I want to pay tribute to all those who opened their gardens which including some who are well over retirement age! While it was quite tiring everyone seems to have really enjoyed sharing their gardens.

The gardens varied from large mature gardens to new gardens and a spectacular wildflower meadow to a delightful courtyard garden, all were different and had points of interest. Some contributors sold plants they had raised and some put on refreshments and some just enjoyed chatting to the visitors.

St Mary's Church once again had lovely displays both outside and inside the church. In addition we had some new participants – The New Inn, who had an original idea for planting and Send Garden Club who, with the indefatigable Pat Clack, decorated the village blacksmith. Surrey Wildlife Trust put on a walk on Papercourt Marshes, an area not often available and Nikki Best involved the school gardening club. Hopefully this will be at the school next year allowing them to show off some of their horticultural initiatives.

But what of the future?... Kathryn Carr has agreed to be the main co-ordinator for 2024 and the dates will be June 8th & 9th so please put it in your diaries. This year's wrap up meeting felt that next year it was important that the money went predominantly to village charities and that representatives of those charities will get more involved. For example money went to the Guides last year and the Scouts this year but we really hope they will consider putting on a display next year perhaps on the Rec or the wildlife area in Sanger Drive. Maybe the WI or Over Sixties can come up with a floral plan!

Send Open Gardens

Finally a plea to all Send Gardeners, however small your garden, to consider opening for at least one day. We will need some new gardens for next year as one or two people are moving or really retiring! Please contact Kathryn with your contact details or to discuss what might be involved.
sendopengarden@gmail.com

Clare McCann 2023 co-ordinator
8th/9th June 2024



Ripley Pre School

- Purpose built modern setting with free flow access to large garden and school playground
- Term time only, every week day from 8am to 5pm
- FEET funding for 2 year olds and 15 hours for 3/4 year olds
- 30 hours funding available
- Fully flexible sessions
- Experienced, well qualified staff
- Charitable status
- Rated 'Good' by OFSTED in 2018

For information contact Clare Grimes
(Manager)

Email: info@ripleypreschool.co.uk

Mobile: 07807 703002

Telephone: 01483 223230

Ripley Pre-school
Wentworth Close
Ripley
Surrey
GU23 6ED

SEND Diary of Events 2023

Church services are on the Church pages

September

13th	Wed 2.30pm	Over 60's	Church rooms
18th	Mon 10.00am	Charity Shop/Coffee Morning	Church Rooms
27th.	Wed 2-4	Craft and Chat	Church Rooms

October

11th	Wed 2.30pm	Over 60's	Church Rooms
16h	Mon 10.00am	Charity Shop/Coffee Morning	Church Rooms
25th	Wed 2-4	Craft & Chat	Church Rooms

November

10th	Wed 2.30pm	Over 60's	Church Rooms
20th	Mon 10.00am	Charity Shop/Coffee Morning	Church Rooms
25th	Saturday	Chritmas Fayre	Church Rooms
29th	Wed 2-4	Craft & Chat	Church Rooms

Two new groups are now running in Send. Small Steps is a group for parents/carers with babies/toddlers and normally runs on the second and fourth Mondays in the month, between 10 and 11.30am. For further details please contact Christine Acock by email or text: acockchristine@gmail.com or 07513 999112.

St Mary's Strollers is a small walking group who normally meet on the third Wednesday in the month at 2pm at the gazebo on Send Recreation Ground. We stroll/walk around local footpaths and is a lovely opportunity to be out in the fresh air in friendly company. We end up in the Church Rooms for tea and cake! For further information please contact editor@sendparishchurch.co.uk

Treatment Room

AVAILABLE TO RENT

Situated in a private, tranquil & secluded courtyard in Ripley.

Would suit a massage therapist, physiotherapist, osteo therapist, beautician etc...

- Private entrance
- Ample secure parking for clients
- Fully equipped with electric table, stool and towelling
- Flexible terms, half day/full day rates
- Access to a waiting room/bathroom

Please call Mandy on:

07970 925118

to enquire, or for more details



C. F. Hall & Co. Ltd.

We are your local Euronics electrical retailer,
established for more than 60 years.



Sony, Panasonic, Bosch, Samsung, Miele, Roberts, Sebo,
Toshiba, Dyson, Pure, Zanussi, Blomberg & many more top brands

2 Station Approach | East Horsley | 01483 282945
www.cfhall.com

Alan Greenwood & Sons

Independent Family Funeral Directors



*A choice of the latest Jaguar or Mercedes
Hearses and Limousines
Home visit arrangements
Pre-paid funeral plans and Memorials
Caring and Compassionate 24 hour Service
We will not be beaten on price
Direct Cremation Funerals £950 T&Cs APPLY*

2 Aldershot Road
Guildford
GU2 8AF
01483 567 845

66 Send Road
Send
GU23 7EU
01483 210 222

1 Anchor Hill
Knaphill
GU21 2HL
01483 487 889

Please Visit Our Website for Full Details of Our Branches and Services and to View Our Local Obituaries

www.alangreenwoodfunerals.com

RIPLEY AND DISTRICT HORTICULTURAL SOCIETY

RIPLEY & DISTRICT HORTICULTURAL SOCIETY

Our June visit to West Horsley Place gardens was a delight. Although the gardens were very formal when they were first designed in 1710, they are now managed in a naturalistic way with only one full-time estate manager and volunteers (including a couple of our members). However, there is still a formal rose garden and herbaceous border and plenty of areas for the opera goers to picnic in. The gardens had a lovely, relaxing atmosphere and we all enjoyed the visit.

We re-visited Grace and Flavour walled garden in West Horsley in July. It is a wonderful local enterprise and they welcome volunteers from Ripley as well as the Horsleys. Again, some of our members also volunteer here. Volunteers can purchase produce at a very reduced rate, depending on how much time you help there. Great if you don't have the time or space to grow your own. Details of these gardens can be found in the Surrey National Garden Scheme brochure.

The Annual Show will have taken place on Saturday, 26th August and visitors welcomed from 2.30 to see the exhibits and enjoy tea and cake.

We will be at the Farmers' Market on Saturday, 14th October (9-1) and hope to have soup and spare produce available. Do come and see us!

We have arranged two Speaker Talks for this Autumn. Non members are welcome (£3 entry fee) and these are held at the meeting room attached to Ripley Church. Doors open at 7.30 for refreshments and the talks start at 8 pm.

Monday, 16th October Paul Patten will talk on 'Autumn Aspirations'.

Monday, 20th November Jacqueline Aviolet's talk is entitled 'Brussel Sprouts to Tangerines'.

We look forward to meeting you at any of these events.

RDHS secretary, Sue Stranger, can be contacted via email - ripleydhssecretary@gmail.com

Jenny Milligan



Send Open Gardens



- Commercial Property Agents •
 - Surveyors and Valuers •
 - Development Consultants •
- Land and Planning Consultants •
- Property Managers •

(Residential inc. block management and Commercial)

Contact : Andrew Russell Bsc [Hons] MRICS Director
Email: andy@gascoignes.com

2 Gillingham House - Pannells Court - Guildford - Surrey -

AGENCY • PROFESSIONAL • LAND • MANAGEMENT

Anne Haynes Charity

Late summer sees many of the young people in Send and Ripley taking the next step in their preparation for earning their own living. For some this means apprenticeships, for others it means some further or higher education course. But all of these are eligible for an “Anne Haynes Grant”.

This fund has been available since 1702 when Dame Anne Haynes donated a sum to assist children in apprenticeships. The Charity Commission now says of the charity “the interest earned is distributed to young people to help in their further education”.

A meeting is held annually in the Autumn to administer the available funds which is shared among the young people who qualify and apply for the grant.

The criteria for young people to qualify is that they must live in the Parish of Send or Ripley, they must be under 21 and the money must be used to further their education and prepare them for the workplace.

This year. After a break during the Covid epidemic, two new trustees have been appointed to administer and distribute available funds from the charity. Rowland Cornell represents Ripley Parish and Arthur Thomas represents Send Parish.

If any young person, their parent or guardian wishes to apply for funding, please apply with details by email to:-

Arthur Thomas [for Send Parish] jillarty1@gmail.com or

Rowland Cornell [for Ripley Parish]
rowlandcornell@ripleyparishcouncil.gov.uk



Fully qualified hairdresser and barber with 22 years of experience, comes to you, so you can relax in the comfort of your own home.

Please feel free to contact Monica on 07851727665 for your free initial consultation.

Also please visit www.makaihair-makeup.co.uk for wedding hair and makeup.

AT ST. P



HOEBRIDGE CARS
PRIVATE HIRE

YOUR LOCAL CAB

Cars are cleaned between each and every journey.
Masks must be worn for your own protection.

07825 159 225

e: info@hoebridgecars.com
w: www.hoebridgecars.com

Advertise your local business
HERE...

Email
randsamtters@icloud.com by
the 23rd October for the
December Issue.



ripley
osteopaths

Osteopathy for all the Family

DON'T LET ACHES AND PAINS HOLD YOU BACK!

At Ripley Osteopaths we treat all ages and conditions including sporting injuries. Contact us with any questions you might have about how osteopathy could help you stay active and fit.



**WE OFFER A FREE PHONE CONSULTATION AND
£20 OFF ALL NEW PATIENT APPOINTMENTS**

Quote Ripley & Send Matters to receive £20 off all new patient appointments in May, June & July

info@ripleyosteopaths.co.uk

www.ripleyosteopaths.co.uk

07586 702925

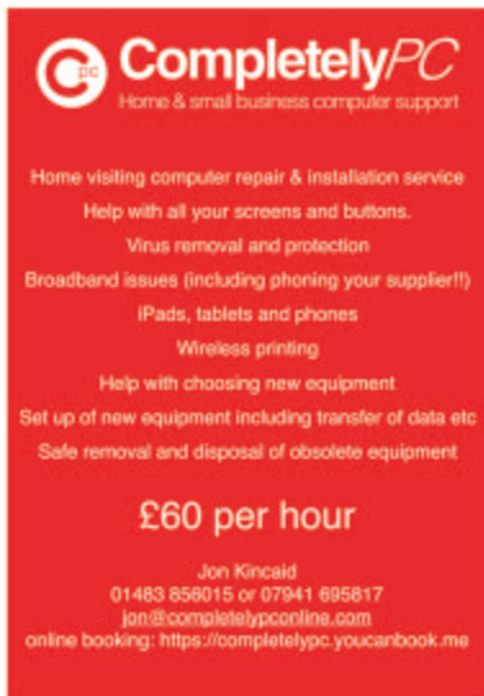



Find us at Webb House on the Portsmouth Road just outside Ripley Village

SEND GARDENING SOCIETY

Evenings are getting darker and the mornings are feeling much cooler. Autumn has arrived and although summer is coming to an end, there are still plenty of plants in your garden that can give colour and interest right through autumn and up to the beginning of winter. Early autumn is all about harvesting fruit and vegetables, whether it is foraging for blackberries in the hedgerows for a homemade apple and blackberry crumble or selecting a perfect pumpkin ready for a bowl of warming soup on Bonfire Night. The Send Coronation May Fair was a successful event – the rain held off - and we enjoyed meeting fellow gardeners and supplying tomato, vegetable and flower plants grown on by our members. Thank you to everyone who donated to and supported our stall.

At the June meeting, Derek Hack our chairman, gave a very interesting talk about 'Invasive Species in our rivers'. Floating pennywort, from South America, is an invasive non-native species that is choking our waterways. Derek heads up a local group of volunteers who, working from the bank help to manually remove plant mats. Once on the bank the plant breaks down although Derek has noticed that inquisitive cows enjoy eating it. Removal allows light to reach the water column allowing native plants and habitats to regrow, reduces flood risk and ensures that we can still enjoy these beautiful spaces. June also saw the Send Open Garden weekend and SGS florally decorated the Blacksmith on Send Road. You may have noticed as you



 **CompletelyPC**
Home & small business computer support

Home visiting computer repair & installation service
Help with all your screens and buttons.
Virus removal and protection
Broadband issues (including phoning your supplier!!)
iPads, tablets and phones
Wireless printing
Help with choosing new equipment
Set up of new equipment including transfer of data etc
Safe removal and disposal of obsolete equipment

£60 per hour

Jon Kincaid
01483 856015 or 07941 895817
jon@completelypconline.com
online booking: <https://completelypc.youcanbook.me>

Bring a little luxury into your home

Curtains, Cushions, Roman Blinds Alterations and Repairs Undertaken.

Friendly, reliable service
For help, advice & free estimates.

call Julie on 07792 211093
email:
sales@thesilkroom.co.uk

The Silk Room
3 Cobham Cottages, High Street, Ripley GU23 6AY

passed, pots of brightly coloured plants – bellis daisies, osteospermum, violas, dahlias and marigolds to name a few. If you missed the display, there is a photograph with this article.

In July, Derek followed up his talk with a guided walk along the New Cut to Papercourt Lock and back where he demonstrated how he and his volunteers physically tackle the removal of this invader. A photo taken by Lynda Turner following this piece shows Derek in action. We also identified and learnt about two other invaders. Giant hogweed and Himalayan balsam. Giant Hogweed is a plant in the Apiaceae family which includes some well-known plants such as parsley, carrot, parsnip, cumin and coriander. It is not native to the UK originating from Central Asia and was first introduced to the UK as an ornamental in the 19th century when it escaped and naturalised in the wild. It is now classed as an invasive species and can be found throughout much of the UK, especially colonising river banks where its seeds are transported by the water. Giant hogweed looks like an enormous cow parsley plant and can grow up to 5 metres. Flowers appear in June and July. They are small and white (or slightly pink) and are clustered on umbrella-like heads known as umbels that can reach a diameter of 60cm. All the flowers on the umbel face upwards. The sap of giant hogweed can cause burns if the sap gets onto your skin and is then exposed to the sun.

Himalayan balsam (*Impatiens glandulifera*) has rapidly become one of the UK's most invasive weed species, colonising river banks, waste ground and damp woodlands. It successfully competes with native plant species for space, light, nutrients and pollinators, and excludes other plant species, thereby reducing native biodiversity. At the time of writing, we are looking forward to our summer picnic in August. We shall be meeting in a member's garden for this annual event. A chance to relax, share food and appreciate the planting and outlook of a fellow gardener's endeavours.

The remainder of our 2023 programme is as follows:

Tuesday 3rd October: Visit to the Hilltop Centre RHS Wisley with a guided walk and a scheduled talk by an RHS Speaker.

Wednesday 4th October: Talk by John Lawrence on 'How to make your garden wildlife friendly.'

Wednesday 6th December: AGM and Christmas party for members.

Send Gardening Society provides local gardeners with an opportunity to get together and learn more about growing plants of all kinds. We meet up once every 2 months with fellow 'gardeners' for a sociable and interesting evening out. We have a varied programme that includes talks from speakers who are experts in their field, garden visits in summer and practical workshops. We are looking for new members to join our society and would welcome anyone from beginners to experienced green fingers alike, who can pass on their knowledge to others. We pride ourselves on being a friendly club, so if you are a newcomer to Send or surrounding district, or an existing resident, come along and join us to make friends and create a new garden through the exchange of plants and ideas. Please e-mail at f.veybrookcollett@gmail.com by phone on 01483 765730 (Secretary Fiona Collett) or by coming along to one of our bi-monthly meetings which are at 7:30pm in the Church Rooms.

Linda Davis Committee Member.

Send Get Creative

The fifth GetCreative in Send will be held in the Send Evangelical Church Hall on the Broadmeads between 10am and 3pm on Saturday 30 September.

GetCreative's declared aim on our FB Page (a group on SendVillage) is to involve more Send residents in arts and crafts activities. So, in that spirit, throughout the day there will be several activities that visitors can take part in for a small charge. Plus lots of stalls which will be selling unique gifts. Time for some early Christmas shopping? For full details, see the flyer enclosed with magazines distributed in Send Parish.

New this year: a cartoonist, new artists, a photographer, 3D printing, metal construction kits & jigsaws, knitwear for adults and children..... Plus some old favourites!

Send Scouts will be manning the free children's craft table in the morning, with Send Guides taking over for the afternoon. And a face painter will join us at 1pm - £1 charge per child.

A truly family-orientated community event!



Sophia Wyatt
AESTHETICS

**SKIN TREATMENTS
FOR MEN**

- PERMANENT HAIR REMOVAL
- MOLE & SKIN TAG REMOVAL
- SUN SPOT & VEIN REMOVAL
- ANTI-AGING TREATMENTS
- SKIN RESURFACING
- HAIR LOSS TREATMENTS

WWW.SOPHIAWYATT.CO.UK
Send Therapy Rooms
175 Send Road
GU23 7ET

07908 971799

Dermalux TRI-WAVE MD

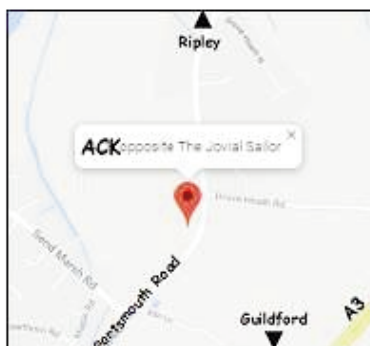
Lynton
Approved Clinic
★★★★★

QR code, WhatsApp icon, Facebook icon, Instagram icon

A.C.K.

Automotive
Services

www.ackservices.co.uk



Tel. 01483 225373

- ✓ Vehicle Servicing
- ✓ All Makes of Cars & Vans
- ✓ MOT Test – Petrol/Diesel
- ✓ **FREE** Loan Cars (by arrangement)
- ✓ Full Bosch Diagnostic Equipment
- ✓ Fully Equipped Workshop
- ✓ Auto Electrical Service
- ✓ **FREE** Air-Conditioning Check
- ✓ Exhausts, Tyres & Batteries
- ✓ 4 Wheel Alignment Service using Hunter laser alignment equipment



10% DISCOUNT
On production of this advert

VISIT OUR WEBSITE AT
www.ackservices.co.uk
ack.eyles@btconnect.com



Portsmouth Road, Ripley, Surrey GU23 6EY

Contact Peter Eyles on 01483 225373

King Charles III Coronation Party

On Sunday 17th May 2023, Ripley like many Villages across the UK celebrated the Coronation of our new King, King Charles III. This turned out to be a very hot and sunny day sandwiched between two wet days, for which everyone enjoyed themselves immensely.

With the support of Ripley Parish Council and with two Parish Councillors on board, an Organising Group was formed with the intention to hold a Village Picnic with live Music in celebration of the Coronation, culminating with the traditional lighting of our Village Beacon at dusk, similar to the event previously held for our late Queen Elizabeth's Platinum Jubilee. Having experience in organising the Platinum Jubilee celebrations, the initial concern of the group (except for the weather) was the funding of the two live bands, as the event was not intended to be a fund-raising event just a fun event, available and free to all.

We can now inform you that with some generous Corporate Sponsorship from local Companies & Organisations, and Donations from local Individuals, we did indeed meet our funding target prior to the event, and even had a surplus. With this pre-event surplus, together with a Bucket Collection held on the day and the generosity of those present, this has meant that we are now pleased to announce that a final surplus of £1668-00 was raised from that day in May.

This money has now been distributed between two local charities "Cheery Trees" at East Clandon and "Woking Hospice" and our sincere thanks go to all those that contributed to this amazing amount, THANK YOU.

KC111-Organising Group.

RIPLEY BONFIRE
2023



This year's celebrations will take place on SATURDAY 28th OCTOBER 2023.

Bonfire building will commence on Sunday morning 1st October and anyone wishing to help should meet on the green from 9am, tea and biscuits provided.

Anyone wishing to help on the night, either assisting with general marshalling or with the much-needed street collection, should contact one of the following:

Collection: Peter Hookins – 07941 007078
peter@hookinsaccountants.com

Marshalling: Steve Hill – 07774 177771
stephenphill@btinternet.co.uk

We look forward to seeing you all on the 28th for another legendary Ripley Bonfire. Please remember parking is available from mid-afternoon in our large car park off Newark Lane and with Road Closures on the High Street from 7pm, the torchlit procession will then leave the new village hall site at 7.10pm, with the Bonfire being lit at 7.30pm and the fantastic Firework display at 8pm.

Please remember for you and your family members to stay safe on the night and ensure all pets are well cared for. Thanking you for your continued support.

Steve Hill – RBA Chairman

Down Your Wey

The team have been continuing the fight against the alien invasive pennywort and I like to think we may not be winning the war but we have had a few small victories and generally it has been a better year. The battle and war will of course continue year-round. We have a couple of new recruits joining the team in the near future so we will get some reinforcements soon to join us battle hardened weed warriors. Watch this space.

The summer was normally abnormal weather-wise with Mayflies still emerging in August at the same time as fairy rings and the best tasting blackberries I think we have had for a few years. The vegetation had to deal with heavy rain, wind and warm, dry spells before the cycle repeated itself. As gardeners among you will know, most of it responded by just growing like crazy. It's a challenge to pick the best time to strim, to avoid the plethora of walkers and dogs enjoying the river. Apologies if I pitched it wrong and disturbed your peaceful constitutionals. As a rule, I strim in the rain when I can, my theory being there are less people to disturb and I'm going to get covered in plant juice, so rain as well doesn't make it too much worse.

Emma Goodwin

07786 703834

emma.Goodwin@nationaltrust.org.uk



As the river gets a little quieter, less boats are out cruising, some of the trees are changing colour and the temperatures are slowly dropping. The evenings are drawing in and mists on the fields are a regular sight. Spiders webs are highlighted by dew and sparkle with the weakened sun in the mornings. Dragonflies and damselflies are much easier to spot on the reeds slowly warming up and waiting to dry off before prowling the margins. Swallows, Swifts and House martins will all be filling up their final reserves before making the big journey south again. And keep a look out for fungi as we are coming into peak season where they begin to push up fruiting bodies through the leaf litter in dark and damp places. A few butterflies will be around, hurriedly building up reserves for hibernation or a long journey south. If the food plants are still around then you should still be able to see some species still on the wing on sunnier days.

While we are beyond peak growing season, I can't afford to become complacent, as the mower will still be as busy as ever on the locksides and moorings. The towpath as slowed too but still keeping me busy and if I am very lucky I hope to get the paint brush out a couple more times and get some paint on some bridges before I move length. As we move into wetter months, the weir keeping will begin to take over and it will become harder to get these tasks completed. So here is hoping it will be a productive month and the rain can come again another day.

Chris Charman
07786 703833



09TH
SEPT.
2023

RIDE+STRIDES for Churches

DISCOVER AND
SUPPORT SURREY'S
HISTORIC CHURCHES.



join us

Stretch your legs and relax your mind, visit unique historic buildings, see beautiful countryside, get some exercise and have fun with the family and friends!

Ride+Stride for Churches is a sponsored bike ride or walk between churches, exploring and enjoying town and countryside in Surrey. Run by the Surrey Churches Preservation Trust, the money raised helps to repair churches, chapels and meeting houses throughout our County.

Half of the money you raise goes to your nominated church, half for grants to help maintain Surrey's churches.

Find out more and download sponsorship forms and maps at www.surreychurchespreservationtrust.org or email scptrichardmorris@gmail.com



Surrey Churches
Preservation Trust

Find out more at
www.surreychurchespreservationtrust.org

Charity number 1063556

Supported by the
National Churches Trust
Charity Number 119845



for good.

Advertise your
local business
HERE

Email randsamt-
ters@icloud.com
by the 23rd
October for the
December Issue.

K.Warren

General Builder & Plasterer
All aspects of building and
plastering undertaken from
small rooms to extensions.

References available



Tel 01483 479370
07814 361260

Aldridge Ironing Service

*Great rates
Established 1999
Regular or one off
Excellent references
24hr/48hr turnaround
Free local collection and delivery*

Please see our website for prices and info



www.aldridgeironing.co.uk

01483 210229

aldridgeironing@gmail.com

Advertise your local
business HERE

Email randsamt-
ters@icloud.com by
the 23rd October
for the December
Issue.

Ripley Business Association

The Committee would like to apologise for having to cancel this years Parish day on the green. Rest assured after 9 months of organising this was the last thing the committee wanted. Mainly this was due to the forecast in adverse weather conditions, with thunderstorms and rain all day.

After many discussions with parish councillors and all the stakeholders involved we had no choice but to cancel. This event was to funded by your local businesses as a way of giving back to the community that support the many independent businesses in Ripley and beyond. We simply could not afford to spend our members money on an event that was forecast to be a washout. Here is to a bigger, better dryer event next year on the green!

If you would like to make a difference in your Community. Please come and join our committee of volunteers. Email, hello@discoverripley.co.uk.

www.discoverripley.co.uk

Ripley Grapevine

For those who do not know of The Ripley Grapevine, it is an email service that goes out to anyone in Ripley parish (or anyone else who wants to receive it) which details anything of interest to the residents - e.g. events happening in the village, planning issues or anything else that the residents may be interested in.

It has been running for over 10 years and presently has over 400 email addresses.

If you would like to subscribe, simply email chris.lee@btinternet.com asking to be included. There is no charge and your details will not be passed on to any third party.

I believe many residents find it an invaluable information service, so please let me know if you would like to join.

Chris Lee



Your local Independent Builders Merchants

CALL 01483 921040 **EMAIL** sales@alfiambuildingsupplies.co.uk

OPEN Mon - Fri 7.00am to 17.00pm - Sat 8.00am to 12.00pm

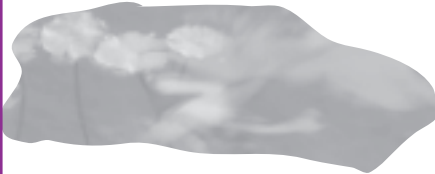
www.alfiambuildingsupplies.co.uk



VISIT TODAY Unit A, Burnt Common Distribution Centre, London Rd, Send, Surrey, GU23 7LN

DAVID SMITHERS POND MAINTENANCE & CONSTRUCTION

ALL ASPECTS UNDERTAKEN,
INCLUDING COMPLETE DRAIN-
DOWN, CLEANING, PLANTING AND
REPAIRS TO PONDS OF ANY
SIZE.



TO ARRANGE A FREE ESTIMATE
PHONE

01483 374620 (EVENINGS)
07732 541057 (MOBILE)

Send Electrical Services



At Send
Electrical Services
we offer a full range of
domestic electrical services provided
by our fully qualified Electricians.

Work we frequently carry out includes:

- Kitchens and Extensions
- New Builds
- Rewires and refurbishment
- Fuse board changes
- Additional electric points
- Garden & outside lighting
- TV, telephone & network cabling
- Boiler & control wiring
- Burglar & smoke alarm systems
- Testing & inspection

Tel: **0800 689 0017**
Email: info@sendelectrical.co.uk
www.sendelectrical.co.uk

ZOEY HACKNEY

PROFESSIONAL PAINTING & DECORATING

Qualified and fully insured

- Local recommendations
- Free, no obligation quotations
- Reliable, skilled, friendly

30 GROVE HEATH NORTH • RIPLEY • WOKING • SURREY • GU236EN

TEL: 01483 222830 • MOB: 07721 455554 • EMAIL: ZOEYHACKNEY@BTINTERNET.COM

Nick Van Dyke Chimney Sweep



www.nvdchimneysweep.co.uk

Your local reliable Chimney
Sweep for all of Surrey

Office: 01483 225332

Mobile: 07875 192207

Nick@nvdchimneysweep.co.uk

Checkatrade

Approved member

Search Nick Van Dyke Chimney Sweep to
be taken direct to our Checkatrade page
and benefit from the blue tick guarantee.



Guildford Fuchsia Group

We are always wanting to recruit new members who are interested in all forms of gardening. Although we try to promote growing the fuchsia, we have a varied programme throughout the year to cater for all interests. We are affiliated to both the British Fuchsia Society and the RHS.

We meet at the Guide HQ in Nightingale Road, Guildford, which has its own car park, on the fourth Tuesday of each month (not December) at 7.45pm. Currently our annual membership fee is £10 per year plus £2 each meeting attended (includes refreshments).

At the present moment we are meeting on a casual basis until into the New Year, but then we hope to meet regularly and get a programme organised.

Further information from our website www.guildfordfuchsia.co.uk or direct from our treasurer (see inside back cover) or email enquiries@guildfordfuchsia.co.uk

Ripley Over Sixties Club

Ripley Over 60's will be meeting again every first Saturday of the month throughout the year. We will now be meeting at Ripley Primary School at the usual time of 2.30pm. We have a full programme of entertainers for the year.

Help needed please setting up the hall for our meetings. Setting up and storage of chairs etc. Please get in touch if you can help.

It will be lovely to see old friends once again or any new members. We are also looking for a new chairperson. Please contact Edna to apply and for any queries.

Edna Millis, Chairman

01483 225483

SEND OVER 60'S CLUB

The Send Over Sixties are pleased to say we are up and running again, anyone interested in joining us is very welcome to come along. We usually have a speaker, raffle, bring & buy, tea & cakes & chat. We meet every second Wednesday in the month at the Church Rooms, Send, why not come along and join us.

Sally Legerton, Chairman - 01483 223542.

-

Woking Chiropody and
Foot Health Practice Limited

01483 833078
info@wokingfeet.co.uk



SURGERY AND VISITING PRACTICE

78 Westfield Road
Woking
Surrey
GU22 9NG



Call **01483 833078** for an appointment – opening hours Monday-Friday 9am – 7pm

Rosalie Bennett MSSCh MBChA
(HCPC Registered)

Richard Bennett BA (Hons)
MCFHP MAFHP



Muddy Paws
Dog Grooming

07882 372120

Send Evening WI

We meet on the 4th Wednesday of the month, 8pm, at the Church Rooms in Send. The monthly meetings are always interesting and on many varied topics.

We also have coffee mornings, rambling group, book club, theatre trips and outings to places of interest. You will find us a very friendly group so if you are new to the area or looking for a new interest or to meet new people - do give us a try.

Contact Judy on 0792 6049255 or Jenny on 07906747344

theWI
INSPIRING WOMEN

Ockham & Ripley WI

We meet on the 1st Wednesday of each month at Ripley Bowls Club, Rose Lane at 7.45 and close at about 9.45 after a light super. We have a varied and interesting programme each month, also a yearly Warner break, book club, film afternoons, theatre trips, crafting, rambling and visit places of interest. We are a small friendly group. If you are looking to join a WI come along and meet us. For further details contact Lesley 01483 225125 or Lynne 01737 214805.

Autumn & Winter Bedding Plants

**Ripley Nurseries
Farm Shop**

01483 225090

A.LUFF & SONS LTD
EST. 1895

www.RipleyNurseries.co.uk



SEND VILLAGE CLUB

It's that time again to update on the last few months and promote future events that our committee have been busy organising. We are truly lucky to have a great team of volunteers who really do work hard.

It all happened in May! We opened during the day to watch the coronation of King Charles whilst enjoying sandwiches, cake and cups of tea. In the evening we had live music by 'Free Peace Sweet' great fun, dancing and singing by all. We then attended May Day. Some of you may have seen us on the recreation ground with our tombola stall and the very popular Smash Crockery. We were pleased once again to be able to make a donation from the smash crockery of £82.00 to the Debra Charity Shop who kindly save unwanted/chipped china for us.

At the end of May a football tournament known locally as 'Coppa Di Dodge' was organised by Val Jones, with help from her family and friends and was played on the recreation ground in memory of Barry Jones. In the evening we welcomed all the players and their families to the club, where they were entertained by local band 'The Decades'. A great evening was had by all and over £2,000 was raised for Cancer Research. Amazing turn out and support well done Val and all.

We quieten down for the summer but we will still have planned an end of term School Disco in July and a skittle/horse race night in September and we continue to have Bingo each month on a Saturday night. We also loaned our Horse Racing equipment to Worplesdon View care home where the residents enjoyed their first Worplesdon National.

Finally well done to all the players of the dart teams, some great results for Send this season. We look forward to the season restarting at the end of summer.

We are also currently advertising for a bar person to cover maternity leave, holidays and ad hoc shifts, if you are interested please see our advert on our FB page or on the outside club noticeboard.

Finally thank you to all our members who continue to support our efforts and use the premises. The Committee are a voice for every member and are always happy to receive ideas, comments and help. For information on memberships, opening times and future events please check our noticeboard, Facebook or Instagram.



Dale Barratt MCFHP, MAFHP Foot Health Practitioner

01483 479350 / 07931313875

dalebarratt.973@btinternet.com

I am a foot health practitioner, and treat the following:

- * Corns and Callus
- * Fungal Nail Infections
- * Ingrown and Involuted Nails
- * Care of the Diabetic and High Risk Foot
- * Athletes Foot
- * Specialised Nail Cutting
- * General Foot Maintenance

If I can be of any assistance, please call for an appointment



SOLICITORS



hlewis@arthurlegal.co.uk



Tel: 01483 222499

Fax: 01483 222766

Web: annaarthur.com

ANNA ARTHUR & ASSOCIATES SOLICITORS

FIERI, FACIAS HOUSE, HIGH STREET
RIPLEY, SURREY, GU23 6AF

Divorce & Separation
Child Contact & Finances
Co-Habitation Agreements
Residential Conveyancing
Company Matters
Commercial Property
Wills, Probate & Trusts
Lasting Powers of Attorney


By Appointment Only
There is office parking
(By Prior Arrangement)

Our team of highly trained professionals are dedicated to helping you achieve healthy, glowing, youthful skin through personalised treatment plans. Book an appointment today and start your journey to beautiful skin.

- Electrolysis, Laser & IPL Hair, Pigmentation & Vascular Removal & Skin Rejuvenation
- Lesion Removal - Sun Spot, Skin Tag, Moles, Wart, Verruca, Milia and more
- Plasma Fibroblast Skin Tightening
- Tattoo Removal
- Cosmetic & Medical Tattooing
- Glycolic Peels, Micro-needling, Electroporation
- Facials, Waxing, Massage and much more....



Send Therapy Rooms
175 Send Road
GU23 7ET

 07908 971799

WWW.SOPHIAWYATT.CO.UK



DOG DAY CARE CENTRE

- Secure and fun environment in a countryside location
- Acres of fenced fields for play with like-minded doggy pals
- Constant attention assured from a professional caring team
- Ad hoc or regular bookings welcome
- Flexible and reliable service

Your dog couldn't wish for a better way to spend his day!

10% DISCOUNT OFF FIRST DAY

Please call us on:

07557 797917

w: dogdaysadventure.co.uk





Voo Veterinary Group

Voo Vets Ripley
The Old Saddlery, High Street,
Ripley, Surrey GU23 6AN
Tel: 01483 222212
24hr Emergencies: 07714 295844

Helping you and your pets live life to the full...

As a family owned and run group with an established local history, we are friendly, caring and approachable. We love looking after the local pet community, and take a great deal of pride in being able to make a difference to you and your pets.

Our Ripley practice offers consulting and minor procedures, with surgeries and diagnostics performed by the same team at our Cobham and (new) Pyrford Practices. Complimentary transport is available, if needed. Our hospital in Surbiton provides support for more complex cases, specialist and 24hr emergency services. **Our hospital team provides 24hr care, so your pet will stay with us until they are better, and well enough to return home.**

We offer a wide range of services including:

- Free 2nd Opinions
- Free Health Checks
- Affordable Healthcare Plans
- Free advice and support in choosing a pet to join your family
- Headstart for puppies and kittens (everything you need up to 6 months, including free, unlimited consultations, for just £139)



For **25% off** your first treatment please quote: **VOOMATTERS25**

Please see our website for more details, or pop in to meet our team. **We'd love to see you!**



Follow us on social media to be kept up to date with news and events

Send Organisations

Advanced Motorists Local Group	John Panting	07999 338616
Conservative	Alex Stewart Clark	07710485264
Horsley & Send Cricket	horsleyandsendcc.co.uk	285322
Lancaster Hall Bookings	lancasterhallsend@gmail.com	
Mothers Union Send	Beth Shutt	222193
Over 60's	Sally Legerton	223542
Parish council	Nichola Mair	479312
Rotary Club	Gill Colbeck	762076
SADS	Caroline Croucher	07887521684
Send & Ripley History	helenafindenbrowne@com-	
Send Evangelical	Peter Killingley	728633
Little lambs toddler	littl lambs@sendec.org	
Send Gardening Society	f.veybrookcollett@gmail.com	765730
Send Scouts	membership@sendscouts.org	
Send WI	Judy	07926 049255
Send Arts and Crafts	sendartsandcrafts@gmail.com	
Send Guides	gibsonsendguides@gmail.com	
Brownies	sallydaboo@hotmail.com	
Rainbows		01372 375198
Send Help		225255
Send Social Club	Lucy Truscott	224652
Send United FC	sufc.chairman@gmail.com	

Disclaimer

In no event shall Ripley & Send Community Publishing Association (R&SCPA) be liable for any special, direct, indirect, consequential, or incidental damages or any damages whatsoever, whether in an action of contract, negligence or other tort, arising out of or in connection with the use of the Service or Products of the Advertisers. R&SCPA accepts the advertisements in good faith and does not endorse any Service or Product provided by the Advertisers.

Ripley Organisations

Advanced Motorists local	JohnPanting	07999 338616
Bonfire Association	Steve Hill	07774 177771
Cricket Club	Steven Cliff	225512
Elmbridge Model Club	Tony Handley	07876 030930
Farmers Market	Sally Erhardt	223861
Christmas Fair	Jim Morris	224847
Fuchsia Group	JeanDenness	07867 564090
Horticultural Society	Jenny Milligan	225073
Papercourt Sailing Club	info@papercourt-sc.org.uk	223904
Parish Council - Parish Clerk	Jim Morris	224847
Probus Club	Les Brown	223024
Ripley Bowls Club	JohnPhillips	225437
Ripley Pre-school		223230
Rotary Over 60's	Edna Millis	225483
Ripley British Legion Social club		224616
Ripley Scouts	info@ripleyscouts.org.uk	0800 987 7897
Village Hall Bookings	Trish White	07748 531275
West Surrey Natural History Society	emkingston@btinternet.com	
Ripley Good Neighbours		210007
Ripley Business Association	hello@discoverripley.co.uk	

Next Issue.....

I will be featuring all your pictures from the various events happening over the next few months. Please take lots of pictures and send to me as Jpeg format to randsmatters@icloud.com. Many Thanks, Andy.

WHY SHOULD YOU CHOOSE SEYMOURS?



Partner Owned & Run

Because we're Partner run, the owner of the business will be personally involved in your sale.



20 Seymours Offices

All the care and attention of a local independent with the vast selling power of our network.



Knowledgeable Local Staff

Our staff live nearby to offer unrivalled local knowledge and expertise when you move.



Unrivalled Marketing

Attract the best buyers with high quality marketing photos, videos, brochures and social media.



National & London Buyers

Get exclusive access to buyers from 800 Guild member agents across the UK and London.



Property Finder Services

Sell with Seymours and we'll prioritise your search to find your dream home.



Supporter of Local Charities

Enjoy peace of mind working with an agent that supports local schools and charities.



No.1 In Surrey

We're proud to help more people move in our local community than any of our competitors.

If you're thinking of selling or letting, please call us
for a **free market appraisal of your property.**



Ben Conquer
Director



Joe Leonard
Director

Seymours Ripley

01483 211644 | sales@seymours-ripley.co.uk



Seymours