



RIPLEY & SEND
Matters
WINTER 2022

**A NOT FOR PROFIT MAGAZINE PRODUCED AND
DISTRIBUTED BY VOLUNTEER RESIDENTS
ISSUE NO. 119**

Useful Numbers

All telephone numbers given throughout this publication are under the Code 01483 unless they are mobile numbers beginning with a 0.

Ripley Councillors & Parish Council

Guildford Borough - Colin Cross 224107

Surrey County - Colin Cross.....224107

Ripley Parish Clerk - Jim Morris..224847

E-mail clerk@ripleyparishcouncil.gov.uk

Web: www.ripleyparishcouncil.gov.uk

Send Councillors & Parish Council

Guildford Borough - Susan Parker203167

“ “ - Margarida(Guida)Esteves

Surrey County - Robert Hughes

Send Parish Clerk - Nichola Mair479312

E-mail clerk@sendparishcouncil.gov.uk

Web: www.sendparishcouncil.gov.uk

Guildford Borough Council 505050

Surrey County council 518800

SCC Call centre (Highways etc) .03456 009 009

Local Police101

Villages Medical Centre 226330

Boots Pharmacy222162

Ripley Good Neighbours 210007

Send Help225255

Hospitals - RSCH inc. Farnham Road . . 571122

Recycling hotline445084

Dog line505050

RIPLEY & SEND Matters

This magazine is produced and published by Ripley & Send Community Publishing Association - an organisation of most of the clubs and societies of Ripley and Send. It is distributed free of charge in the Ripley, Wisley and Send area.

The Production Team

Editor Andy James:

E-mail:

randsmatters@icloud.com

Distribution - Ripley

Jennie Cliff 224051

Send

Jean Sandell 222903

Secretary

Jan Carter 224221

Committee: Mike Baker,

Jean Turner, Janet Manktelow

Alan Sandell, Rowland Cornell

Ripley & Send Matters is copyright

2022 of Ripley & Send Community

Publishing Association

Printed by BISHOPS PRINTERS

023 9233 4900

Front Cover courtesy of Brian Orman

Next Issue...

Please email your news or publicity material to me or send to, Andy James, Eden Lacy, Portsmouth Road, Ripley GU23 6ER by 20th January 2023, for the next edition due out 1st of March. Please note, I may have to edit your material or even leave your item until a later edition. However if you have items between editions that are urgent, please email me so they can go onto the website: www.ripleyandsendmatters.org.uk

A PDF edition of the magazine is also now available to view online.

Hello Dear Reader,

It is that time again. Christmas is on it's way, a time to spend time with family and friends. I love the hustle and bustle of all the planning for Christmas from stir up sunday on the 20th November when we start getting our Christmas cakes and puddings ready for the big day, to planning the main event of Christmas lunch. For me that is generally around 20 people, you won't believe the amount of roast potatoes required for that many people!

Also this time of year makes me so thankful for what we have, our families, friends and loved one's and really appreciate how lucky we are to live in these beautiful community centric villages.

There are lots of activities happening in the next few months in both villages there is no reason to feel alone when there are so many coffee mornings, gardening society meetings, Fuchsia groups, Womens Institute meetings, church services and the list goes on. All of these groups and activities rely on volunteers to pull off the meetings, events and day to day running of these organisations. To those of you involved in any way as a volunteer I would like to offer my sincere thanks, our communities very much appreciate you.

If this is a time of year that you dread there is always someone to help from the amazing teams of volunteers at both Send Help and Ripley Good Neighbours, give them a call, they are all there to help and support.

It really has been a scary year so far with the invasion of ukraine, the interesting actions of our government and the shock of increasing household bills rising at such a fast pace and the threat of a recession for next year, it really seems all gloom and doom. Smith's charity are also here to help this Christmas for those struggling financially, see page 26 for more details. Here is to a better more positive 2023!

On behalf myself and all of the hardworking volunteer team and Distributors here at Ripley and Send community publishing association I would like to wish you and your loved ones a Very Merry Christmas and a Happy and Properous 2023!
Andy James - Editor

INSIDE THIS ISSUE

SEND SCOUTS	P14
SMITH CHARITY	P26
RIPLEY BUSINESS ASSOCIATION	P52
SEND VILLAGE CLUB	P58

Free valuations 9am-5pm every
weekday



Ewbank's

Surrey's Premier International Antique & Specialist Auctioneers



Vintage Posters: 1 December
TLC Deck of Cards, Charity Art Auction: 2 December
Cars, Motorbikes & Automobilia: 6 December
Jewellery, Watches & Coins: 7 December
Designer Handbags: 7 December
Silver & Fine Art: 8 December
Antiques, Books, Stamps, Asian Art & Antique Furniture: 9 December
Fine Wines & Spirits: 15 December
Trading Cards Auction: 16 December
Antique & Collectors': 4 January
Vintage Posters: 5 January

**Valuations for sale,
probate and
insurance**

Phone: 01483 223 101

Burnt Common Auction Rooms, London Road, Send, GU23 7LN
antiques@ewbankauctions.co.uk

ewbankauctions.co.uk



After our long hot summer, the Green and surrounding woodland and countryside are slowly recovering but we still need a lot of rain this winter to restore the water table to a more sustainable level.

Having said that, we sincerely hope that we do not encounter heavy rain on Sunday 4th December for the Ripley Christmas Fair, which will again be located on the Green. The Christmas Fair is a project that has developed over the past 12 years in order to fund the beautiful tree lights throughout the High Street. Please give this event your full support, buy your raffle tickets and Christmas cards (designed by children from Ripley Court School) and shop at over 90 stalls. Each year to date we have successfully raised enough profit to adequately fund these lights but costs have risen dramatically this year (the lights are required to be installed by the team from the Borough Council and they have increased their invoice substantially, albeit for the first time in 12 years).

We are very grateful to the many local businesses who have generously donated prizes for the raffle or donated money directly for the cost of the lights. We would particularly like to thank Ripley Farmers Market, Wills and Smerdon and Charybdis Developments for their kind support.

The Parish Council hosted another successful Volunteers Evening at the Cricket Club in October, where we introduced more newcomers of the village to the many different groups and event organisers that are part of our community. If you would like more information on volunteering, please contact Jim the Clerk at the Parish Office, which is located in Victory House on the High Street. Jim's new office hours from January will be Wednesday, Thursday and Friday 10-6pm or please email clerk@ripleyparishcouncil.gov.uk.

In May 2023 there will be elections held for the Parish Council for the next four year term. Please contact Jim for further details for this very rewarding voluntary role that enables you to directly contribute to the running and well-being of your community. If you've ever wondered what we do or why we have made decisions with which you disagree (or even approve!), this is your opportunity to find out and make a difference to your village. On behalf of the Parish council we would like to wish you a Merry Christmas and Happy New Year.

Suzie Powell-Cullingford
Chairman

Ripley Parish Council members assembled on The Green on Sunday 11th September to Proclaim the new King.

The Proclamation

We come together this afternoon following the passing of our late Sovereign, Queen Elizabeth the Second. Our sadness at this time is shared by people across the globe, as we remember with affection and gratitude the lifetime of service given by our longest-reigning Monarch.

But the basis on which our monarchy is built has ensured that through the centuries the Crown has passed in an unbroken line of succession. Today's ceremony marks the formal Proclamation to the people of the Parish of Ripley of the beginning of our new King's reign. Yesterday the Accession Council met at St. James's Palace to proclaim our new Sovereign. The flags which had flown at half mast since The Queen's death were raised briefly to their full height to mark the start of His Majesty's reign. The Accession Council also made an Order requiring High Sheriffs to cause the Proclamation to be read in the areas of their jurisdiction. The High Sheriff of Surrey discharged that duty earlier today and now, with my humble duty, I now bring the words of the Proclamation to the residents of the Parish of Ripley.

Ladies and Gentlemen. The Proclamation of the Accession.

Whereas it has pleased Almighty God to call to His Mercy our late Sovereign Lady Queen Elizabeth the Second of Blessed and Glorious memory, by whose Decease the Crown of the United Kingdom of Great Britain and Northern Ireland is solely and rightfully come to The Prince Charles Philip Arthur George: We, therefore, the Lords Spiritual and Temporal of this Realm and Members of the House of Commons, together with other members of Her late Majesty's Privy Council and representatives of the Realms and Territories, Aldermen, and Citizens of London, and others, do now hereby with one voice and Consent of Tongue and Heart publish and proclaim that The Prince Charles Philip Arthur George is now, by the Death of our late Sovereign of Happy Memory, become our only lawful and rightful Liege Lord Charles the Third, by the Grace of God of the United Kingdom of Great Britain and Northern Ireland and of his other Realms and Territories, King, Head of the Commonwealth, Defender of the Faith, to whom we do acknowledge all Faith and Obedience with humble Affection; beseeching God by whom Kings and Queens do reign to bless His Majesty with long and happy Years to reign over us. Given at St James's Palace this tenth day of September in the year of Our Lord two thousand and twenty-two.
'God Save The King'



SEND PARISH COUNCIL

Hi Everybody,

At the moment, we are facing changes and new challenges in our daily lives and I am sure that I am not alone in finding this difficult to deal with. I am therefore so thankful that in Send Parish we have so many vibrant, energetic and enthusiastic community groups supporting anyone who needs a helping hand: it's really heartening knowing that there is so much support for anyone struggling and it makes Send a truly caring place to live. As I think you already know, Send Parish Council has provided grants for community groups working in the village.

Looking forward to (hopefully) more positive times, May 2023 is going to be busy as we look forward to the coronation of King Charles III. We now know that the coronation will take place on Saturday 6th May and we will be shortly looking at how the village can join in the celebrations. Please do let us know if you have any ideas as to how you think this historic day could be marked. We haven't yet started our discussions but we would be delighted to consider any of your ideas.

On 4th May we will see local council elections taking place, as part of which you will have the opportunity to vote for nine Parish Councillors who will serve for four years. We have some amazing new projects in the village, which include major improvements on the recreation ground (which is linked to the provision of a new community hub). We are therefore looking for candidates who are prepared to stand in these elections, bringing in new ideas and energy to take forward this and other initiatives. After serving for nearly 8 years, I can say that the role of Parish Councillor for our village is highly rewardingalthough admittedly it is demanding! I am sure those elected will really enjoy the experience. If you are interested and would like to have an informal chat, please contact our Parish Clerk, Nichola, for more information.

You may have seen, or will shortly see, drilling equipment in the new cemetery on Send Hill and may have wondered what is going on. We are not seeking oil or fracking for gas! Over the past two years we have become aware that the ground water levels in the new cemetery have risen dramatically, particularly in the winter months.

SEND PARISH COUNCIL

Exploratory work has not identified the specific cause of the problem, but we think it is due to a geographical change in the sub-soil. During November our specialist contractor will be drilling holes in the new cemetery to help identify the source of the problem and the suitability of their drainage system to lower the high water levels. We have all fingers crossed and hope we will be able to resolve this once and for all.

Calling any of you with green fingers! We have been given 70 trees to plant in the village in recognition of the Queen's Jubilee. They will be delivered in December and planted throughout the village in specified sites. We are planning a Community Planting on a Saturday in December and already have names of a few villagers who would like to volunteer.

If you fancy some pre-Christmas exercise and love the idea of making Send even greener, do come along! More spades make more holes... please do help if you can. With many thanks as always to all of our sponsors, our Christmas lights will be turned on Saturday 26th November.....and we hope that this brings some much needed colour and Christmas spirit to the village.

On behalf of everybody at Send Parish Council can I wish you all a very Merry Christmas and the fervent wish that 2023 is a lot more fun than this year has been!

Councillor Phil Beddoes
Chairman
Send Parish Council

**Make a difference in your
village by volunteering!**

**Contact the various
organisations for more
details.**



Ripley

Pre-School

- Purpose built modern setting with free flow access to large garden and school playground
- Term time only, every week day from 8am to 5pm
- FEET funding for 2 year olds and 15 hours for 3/4 year olds
- 30 hours funding available
- Fully flexible sessions
- Experienced, well qualified staff
- Charitable status
- Rated 'Good' by OFSTED in 2018

For information contact Clare Grimes
(Manager)

Email: info@ripleypreschool.co.uk

Mobile: 07807 703002

Telephone: 01483 223230

Ripley Pre-school
Wentworth Close
Ripley
Surrey
GU23 6ED



CLAREMONT FAN COURT SCHOOL

'A school where you can be you'

An independent, co-educational school for 2^{1/2}- 18 year olds, set in 100 acres of greenbelt in the heart of Surrey. Book on to an open day at:

claremontfancourt.co.uk



Jepsen & Co. Solicitors

Your local solicitor providing efficient and personal service

- Residential conveyancing
- Wills
- Lasting Powers of Attorney
- Probate

Please contact Mrs Rica Jepsen
65 East Lane, West Horsley
Surrey KT24 6LR

Tel: 01483-281720
Email: rica@jepsen-law.co.uk

Rosie Haxton

MCSP, HCPC, GRAD DIP PHYS

***Chartered
Physiotherapist***

***Recognised by Health Insurance
Companies***

**21 Bramble Way
Sendmarsh
Surrey
GU23 6LL**

07986158001

**Experienced in:
Back, Neck and Joint Pain
Sports Injuries
Hand Therapy**

The Parish Church of St. Mary the Virgin, Church Lane, Send

Penalties and Peace?

by Tony Shutt, Priest-in-charge, St Mary the Virgin, Send

The FIFA World Cup Final is due on the Sunday before Christmas, kicking off at 3pm UK time. Some churches plan to host screenings of the game. Will football carols rise from the terraces of the pews? 'Once in Real Madrid's City'? O Little Bethlehem Town FC? 'In the Bleak Half-Time Talk?

Football fandom abounds with adulation when teams are doing well, but frustration is only ever a missed goal or defensive error away. Meanwhile insult is not unknown. In one meek and mild example Chester fans sang, "Away in a manger, no crib for a bed, the little Lord Jesus woke up and he said, We hate Wrexham." Though mythologised, there are credible reports that on the Western Front at Christmas 1914 lanterns and fir trees were placed along trenches and carols were sung. British and German soldiers met in no man's land, exchanged gifts, took photographs, and some played impromptu games of football. The local truces didn't last, but they consoled a yearning for peace.

The gentle Christmas miracles of birth, light, and hope, with the rituals and songs we employ to evoke their remembrance and wonder, have unexpected power to bring us to our senses in the isolated dugouts of our endeavours.

To our raging appetites for selfish, futile and merciless tribalism the Christ child presents us with treasures of vulnerability, humanity, and reconciling love, while stadia of angels urge us towards a charity exhibition match and penalty absolving kick-about of peace on earth, goodwill to all.

Advent and Christmas Services

11 December - 3rd Sunday of Advent 10.30am. Nativity Service led by Sunday Club

18 December - 4th Sunday of Advent

8.00am - Holy Communion BCP

10.30am - Holy Communion CW

6.30pm - Carol Service with readings, choir and congregational carols

24 December - Christmas Eve - 3.00pm Crib Service

11.30pm - Christmas Midnight Holy Communion

25 December - Christmas Day

9.00am - Holy Communion from the Straw Chapel (online via Facebook)

10.30am - Holy Communion in Church

CHURCHES

Parish Church of St. Mary Magdalen, High Street, Ripley
Website: <http://www.ripleychurch.org.uk>
Email: churchwardens@ripleychurch.org.uk

In our last update we reported that our vicar, Rev Chris Elson, retired in August. We continue during this period of vacancy to work towards seeking and recruiting a new incumbent, a process that is likely to take us into 2023. We are continuing to explore the best ways that the church can serve and support the community and be at the heart of the community.

As part of the process of recruiting a new vicar, we will be asked to describe the 'profile' of the parish for potential applicants. If you would like to know more about this – or to contribute your ideas – then please email us at the above address. We are very keen to hear the views of interested members of the community regardless of church attendance!

We continue to meet every Sunday morning at 10am for a service everyone is welcome!

The services are led by a mix of visiting vicars and members of the community, depending on the service.

1st and 3rd Sunday of the month: Communion

2nd Sunday of the month: Family service with children's activities

4th Sunday of the month: Service of the Word (traditional but no communion)

Our special Christmas services will be

Sunday 4th December 4.30pm – Christingle (particularly suited to children)

Sunday 18th December 6:30pm – Carol Service

Sunday 24th December .pm – Crib service (particularly suited to children)

Saturday 24th December 9:30pm Last Communion of Christmas.

Sunday 25th December 10:00 Christmas Day Service

Do join us for any or all of these services over the festive season.

Updates for other seasonal events and activities are published on our website. www.ripleychurch.org.uk, Please see the website for information on free Christmas crafts for children and an Advent nativity trail.

If you are interested in being baptised or married in the church please email churchwardens@ripleychurch.org.uk. We would love to help organise this with you.

CHURCHES

Send Evangelical Church, Broadmead Road, Send, GU23 7AD

Website – www.sendec.org

Facebook – facebook.com/sendec

Twitter - [@sendevangelical](https://twitter.com/sendevangelical)

Contact Pastor – Pete Killingley – pastor@sendec.org

Assistant Pastor – Kurt Holmgren – youth@sendec.org

Sunday morning service – 10.30am

We meet for morning worship every Sunday from 10.30am. The service lasts from 75-90 minutes, and includes songs (a mixture of old and new), Bible readings, prayers, a kids' talk, and a sermon. Everyone is welcome, whether you've been to church a thousand times or never before! We love having visitors, and over the years, many visitors have become faithful regulars. There is no dress code you won't be out of place in jeans and t-shirt.

We continue to have no COVID restrictions in place. However, some people prefer to sit in our church hall (adjacent building) to watch a live feed of the service, where we encourage people to be socially distanced and wear masks.

We have a Sunday school (Treasure Hunters) which on average runs three Sundays a month during the main morning service – email our assistant pastor Kurt for more details.

We also have an informal crèche available in our adjacent hall for those with babies and toddlers.

You are also welcome to join us for our evening services at 6.30pm which take place most Sundays.

Other activities –

Our toddler group Little Lambs takes place on Thursday mornings from 10:00 - 11:30 during term time at our church. It is a relaxed group where parents can enjoy refreshments and conversation with other parents while their children have the opportunity to enjoy a wide range of toys and activities, as well as snacks. It runs on Thursday mornings. For more information please email Val at littlelambs@sendec.org.

If you have teenagers, we would love them to join us on Friday evenings from 7.30-9pm, during term-time. We have a lot of fun each week playing a range of games (including table-tennis and pool), eating tasty snacks, taking part in Bible-based group discussions and going on outside trips like bowling, Laser Quest etc. Again, email our pastor Kurt for more info.

Finally, we will have a range of Christmas activities that will take place in December. Further details will be available on our website www.sendec.org over the coming weeks.

Send Scouts

Firstly, a massive thank you to all who helped out at village fireworks on 5th November. It's a highlight of our year, and a very important fundraiser for the Troop, but it simply couldn't be done without the legion of parents, Leaders and other volunteers who help. So thank you to the cake sellers, bucket shakers, turf cutters, bonfire builders, marshals and so many others. And to our sponsors, Alfiam Building Supplies and Seymours in Ripley, your continued input into our village life is hugely appreciated.

Cubs and Scouts recently helped at the Harvest Festival in church, taking the opportunity to tell the congregation what they'd been up to and renewing their Promises with the new version to the King. All sections have respectfully learnt about succession and look forward to the coronation in due course. The Troop also joined representatives of the school, Rotary and other village organisations for the annual Remembrance Day Parade on 12th November.

It's been a busy time for the Troop and we continue to welcome new members. If any boys or girls aged 6-8 (Beavers), 8-10½ (Cubs) or 10½-14 (Scouts) want to find out more about the million activities they could get involved in, please visit www.sendscouts.co.uk. Equally, the more Leaders who commit to helping, the more children we can accommodate. It's worth remembering that Leaders have as much fun as the kids – they're all big kids! So if interested, get in touch – we'd love to hear from you!

Tony Maine,
Group Scout leader



Our opening times:
Thursday 10 - 5
Friday 10 - 5
Saturday 10 - 5
Sunday 11 - 4
Until Christmas



Opening times may vary, so it's best to check our website for updates, just go to The Old Pharmacy page to find out more!

The Old Pharmacy, High Street, Ripley, Surrey, GU23 6BB

Lolapalooza, the luxury and vintage department store: a magical array of ever changing, exuberant and exceptional treasures. Explore our online rambling country house to find curated home accessories, fashion, and luxe lifestyle wares! We are also the creators of Lola's Leads, so you can say goodbye to unsightly extension cables.

Sign up to our Grapevine Gazette to get all the latest news about our exciting local events, workshops, secret sample sales, exclusive discounts and a first look at all our new products!



To sign up just visit our website or email us at lola@lolapalooza.co.uk! We are also available for shopping appointments outside of our opening hours! Just email ripley@lolapalooza.co.uk.

Shop Local - Eat Local - Stay Local - Love Ripley

WWW.LOLAPALOOZA.CO.UK

GET 10% OFF WITH CODE MATTERS10

@LOLAPALOOZALONDON @LOLAS_LEADS

We're building a community of handy people and makers of all kinds.
For more information check out our *WORK WITH US* page!

SEND BUSINESS CENTRE

Offices, Storage & Industrial units
to let on **flexible terms**
Friendly family run business
Super Fast 1 GB internet
Waterside views

www.sendbusinesscentre.co.uk

Tel: 01483 225617



Ebenezer Strict Baptist Chapel

Newark Lane, Ripley

Services held every sunday 10.45am and 2.30pm



**the
coffee
& shop**



Everyone Welcome!

3rd Monday of every month • 10am - 12 noon • Church Room, Send



Send Help celebrates 25 years!

Send Help celebrated 25 years of service to the local community with a tea party for our clients, who were entertained with some wonderful Barbershop singing and enjoyed a delicious spread of sandwiches and cakes provided by our volunteers. Lynda Newland, the chair of Send Help, said a few words of thanks to everyone, in particular to Lorna Cave who founded this much used service back in 1997.



We are a local voluntary group which offers services such as transport to medical appointments, social activities, shopping, prescription collection and befriending calls.

The service is available to anyone in the Send area, young or old. We will visit first to see how we can help.

Many of our clients comment on how vital the service is, particularly if they are not able to drive or don't have family or friends nearby who can help.

We are totally dependent on our volunteers, and would like to encourage others to join us in this important work as drivers and/or duty officers. The time volunteers give is individual and varied to fit around their other commitments.

If you would like to know more about what Send Help can do to help you, or to find out more about volunteering, please don't hesitate to contact us, we would love to hear from you.

In the meantime, we wish you all a Merry Christmas and a Happy New Year.

Tel: 01483 225255

Monday to Friday, 10am – 12 noon

Email sendhelpvolunteers@gmail.com



The Villages
MEDICAL CENTRE

**The Villages Medical Centre,
Send Barns Lane,
Send, Woking
Surrey.GU23 7BP**

**Tel:01483 226330
Fax:01483 225253
www.thevillagesmc.co.uk**

Here for you; our focus on patient engagement and communication. All of us here at the Villages Medical Centre are committed to delivering the highest possible standards of care and service to our patients. And a recent Ipsos MORI patient survey reported that we have scored a very impressive 91% when it comes to overall patient experience. This is an excellent achievement and a reflection of the satisfaction felt by you, our patients. Given the continued pressures we are under and the on-going negative media coverage facing GP practices, this result is all the more pleasing. In addition to this survey, we appreciate greatly the support and kind words we receive from so many of you, either in person, via our website or in the many letters we receive. Here are some examples of what people have said about us; friendly, welcoming, caring, professional, helpful, quick to respond, excellent care givers, efficient, thoughtful, compassionate, knowledgeable and willing to go that extra mile.

So, we want to build on this momentum and increase our engagement and communication with you all. This will ensure we stay top of our game and are here to support you as and when you need us. With this in mind we have recently launched our very own Facebook group and are working closely with our Patient Participation Group to collectively increase and improve our communication with you. We feel that Facebook is an easy way to share general updates from the surgery as well as tips and articles we feel might be beneficial for our community's health and well-being. So, in addition to tackling general topics as wide ranging as mental health, getting fit, CPR and cancer concerns, we will be talking about people and activities such as flu clinics we are running and general news and updates from our team.

We would be delighted to have you follow and share our page, so you, your neighbours and local friends can keep up to date with what's new and who's who here at The Villages. Please visit us on www.facebook.com/TheVillagesMedicalCTR and follow our page. And we will be running a prize draw for new followers. So, follow us today to be in with a chance of winning a tasty (and healthy) prize.

We look forward to seeing more of you join our online community and of course we are always here to see or talk to you whenever you need.

Villages PPG

The autumn has been a busy time for the PPG. We had a stall at the September Farmers Market providing information on who we are, advising on the need to keep hydrated and helping people to do just that with bottles of free water. It was lovely to meet so many patients and receive feedback and comments. An added bonus was that patients were able to book flu jabs for the Big Flu Day.

On the Big Flu Day the PPG were there to support the clinical staff and provide a cup of tea and cakes for patients who had received their jabs. Just a reminder if you are eligible for a flu jab and haven't got round to having it yet please contact the surgery on 01483 226330 to book. Likewise if you are eligible but haven't had your Covid jab please contact the national booking service by dialling 119 or online at www.nhs.uk



**WEDNESDAY COFFEE MORNINGS
IN RIPLEY CHURCH ROOM
FROM 10AM - 12 NOON**



Come and meet your friends and make new ones - enjoy a cup of coffee or tea and a homemade cake.

LIFTS EASILY ARRANGED!

Finally some great news! In September the trustees were awarded £586,000 from Surrey County Council Your Fund towards the rebuild project. Many thanks to all those residents who took the time to complete the online questionnaire in support of the project, it made a difference to our bid. At the time of writing we are also finalising the legal agreement for the payment of £600,000 from Guildford Borough Council from the Garlicks Arch development S106 monies. We have been relentlessly pursuing these funds for nearly 3 years and whilst we always remained optimistic, it is a huge relief to have secured the money.

Meanwhile, we have been making final revisions to the architect plans which are now being submitted to contractors for the tender process. The trustees are anticipating that construction will commence in Spring 2023 with a build time of 12 months. Much of the site will be fenced off for safety but adequate parking will still be available for Victory House during this phase.

Victory House is proving to be very popular as a small hall available for hire, seating 45 comfortably. Many local groups are already making regular bookings and enjoying the smart new facilities and warm environment, now also benefitting from air conditioning. We are also open to suggestions for utilising the hall as a shared work space for individuals who are “working from home” or to use the hall as a private meeting room given the ideal location close to the A3/M25 with parking facilities. We would love to hear from you so please contact info@ripleyvillagehall.org.uk for details.





BROADWAY·BARN

www.broadwaybarn.com

01483 223200

Luxury Self-Catering and Bed & Breakfast



Extra special places to stay in the Village of Ripley

- Broadway Barn Grade II Listed 5-Star Gold Bed & Breakfast – Ensuite Bedrooms
- Broadway Cottage 4-Star – Bedroom, Bathroom, Sitting Room, Kitchen, Patio
- Broadway Villa 5-Star – 1-3 Ensuite Bedrooms, Sitting Room, Kitchen

the bakery

FEED YOUR DAY

The Bakery Shop is one of the few surviving Craft Bakeries in Surrey, delivering handmade, freshly baked goods to our eight shops every day.

DID YOU KNOW?

Fresh hot breakfast goods available daily

DID YOU KNOW?

We make our own sandwiches fresh everyday

DID YOU KNOW?

Our sausage rolls are made with locally sourced butcher's meat

DID YOU KNOW?

All bread, cakes and pastries are homemade by our Craft Bakers

PRE-ORDER YOUR FAVOURITE LOAF OF BREAD!



ASHTEAD • BOOKHAM • BURPHAM
COBHAM • EAST HORSLEY
EFFINGHAM • RIPLEY • SHEPPERTON

thebakeryshop.co.uk

THE BEAUTY &
SKIN CLINIC

MAIN TREATMENTS INCLUDE:

- LINDA MEREDITH HYDRA FACIALS
- DERMA ROLLER FACIALS/SKIN PEN
 - ELEMIS FACIALS
 - WAXING
- GEL MANI & PEDIS
- BOTOX/FILLERS
 - LASER HAIR REMOVAL
 - 3D LIPO
- CELLULITE TREATMENTS
- SKIN PEELS
- SILK LASH EXTENSIONS
- MAKE UP

**Find us on Ripley High Street,
with free parking**

 thebeautyandskinc

 the beauty & skin clinic

www.thebeautyandskinclinic.com

Ripley High Street, Surrey GU23 6AZ

01483 222022



**DISTILLERS
OF SURREY**



Distillers Of Surrey are a small, family-run distillery based in Ripley, on the picturesque Papercourt Lake.

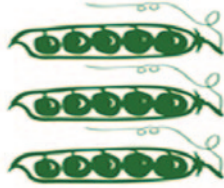
Why not head on over to the distillery or the online shop to choose from their three award winning gin editions? You can also book in for the popular distillery tours to learn more about the business and the distilling process.

Ripley and Send Matters readers can enjoy 10% off all purchases made at the distillery – just bring this advert along with you at the point of purchase:

www.distillersofsurrey.com

Papercourt Lake, Polesden Lane, Ripley, Surrey, GU23 6JX | 01483 222392





Ripley Farmers' Market

Happy Christmas from Ripley Farmers' Market and thanks to everyone who has supported us this year.

We're hoping to finish a successful 2022 for the market and our traders with a great pre-Christmas market on 10 December. There will be extra stalls selling their festive produce, wreaths and presents for that 'hard to buy for' person. Make sure you join us!

We will be in our usual position for the Xmas market near the High Street but due to the wear and tear of the Green throughout the year, the parking will be on the field opposite the Dunsborough entrance on the Milk Road. The market will then move to the area next to the playground for the early months of 2022, prior to reseeding our usual area in the spring ready for our return in April/May. We are conscious of the need to keep the Green as green as possible and are working with the parish council and others to achieve this.

We look forward to a successful monthly market in 2023. Please support us and the large variety of stallholders we have between 9 and 1pm on the second Saturday of the month right throughout the year.

Happy New Year from Ripley Farmers' Market volunteers!





"The manager and his staff are endlessly helpful, going the extra mile to provide the best care possible."

"My mother looks forward to her weekly visits by her carer and very much enjoys her company and the stimulation."

**5 Star
Customer Rating**



SENIORS Helping SENIORS®

....A WAY TO GIVE AND TO RECEIVE™

There's a huge difference in the kind of home care you receive from someone who really understands what your life is like. At Seniors Helping Seniors®, care is provided by someone experienced and who has a little living under their belt.

Contact Tim or Rachel on **01483 416653**

tim@seniorshelpingseniors.co.uk · rachel@seniorshelpingseniors.co.uk
www.seniorshelpingseniors.co.uk



COMPANIONSHIP · MEAL PREPARATION · SHOPPING · TRANSPORTATION · DEMENTIA CARE
MEDICAL APPOINTMENT · HOLIDAYS & OVERNIGHTS · MAINTENANCE & REPAIRS
RESPIRE CARE · HOUSEKEEPING & LAUNDRY · GARDENING · PET CARE

FIELDVIEW TAILORING

**Derek Hack
Tailor**

01483 224164

**3.Prews Cottages,
Tannery Lane. Send.**



Phone for an appointment

For all your clothing alterations

Advertise Your Business Here!

Our next issue is out March 2023

Please Email;

randsmatters@icloud.com



Your Trusted Local Accountants

Hookins Accountants is a family run firm based in Ripley, Surrey, providing all aspects of accountancy and bookkeeping services.

Our Services:

- Business Tax
- Bookkeeping
- Company Accounts
- CIS
- Payroll
- VAT Returns

Get in touch with us today for more information:

 www.hookinsaccountants.com  peter@hookinsaccountants.com  01483 211 985



Advertise Your
Business Here!

Our next issue is
out March 2023

Please Email;

randsmatters@icloud.com

Smith Charity

DO YOU KNOW SOMEBODY WHO COULD DO WITH SOME EXTRA MONEY AT CHRISTMAS?

John Smith was born in the 1500's and died in 1627, he was considered a tramp towards the end of his life as he used to travel with his dog and sleep on friend's couches. In fact, he had been at one time, mayor of a London borough and was a silversmith. He left a great deal of money and it was left in trust for any village who had showed him kindness during his travels and Send is one of those villages.

If you live in Ripley ring Geoff Richardson on 01483 225322. If you live in Send ring Lorna Cave on 01483 222224. All details will be treated with complete confidence.

It only remains for me and my fellow trustees to wish you a very happy Christmas and a happy New Year.

RIPLEY GOOD NEIGHBOURS



OPEN
MONDAY TO FRIDAY
10 A.M. - 12 NOON

01483 210007

WHAT DO WE DO?

We aim to offer any support a good neighbour might offer.

For example: Help with transport, shopping, collecting prescriptions, dog walking, and any other odd job, within reason!

WHO CAN USE RIPLEY GOOD NEIGHBOURS?

Anyone in the Ripley area - young and old alike. But please try to give us as much notice as possible so we can find a volunteer to help.

WHAT DO YOU HAVE TO DO?

Ring 01483 210007 and leave your name and telephone number. The Duty Officer will contact you as soon as possible during opening hours

When you speak to the Duty Officer just explain what help you need and when you need it. We will then try to find a volunteer and then let you know if we have found someone to help

WHAT DOES IT COST?

Help is free but if you can make a donation to help with transport costs we would appreciate it.

WOULD YOU LIKE TO BE A VOLUNTEER?

Just call 01483 210007 and we will give you details. Being on the list commits you to nothing as you can always say no if helping is inconvenient.


SEND AND RIPLEY HISTORY
SOCIETY

ANIMAL MAGIC – How animals shaped our lives.

Starting in early November we have a new exhibition with animals at its heart. Check out the mammoth tooth; consider all the ways that horses have made a difference; the milk that really was local, from cows grazed on the Green; the pigs that were transported in a three-wheeled car and learn about the man who shod a dead horse!

RIPLEY MUSEUM

ANIMAL MAGIC



ANIMAL MAGIC

**HOW ANIMALS SHAPE OUR
LIVES**

NOVEMBER 2022
Until FEBRUARY 2023
EVERY SATURDAY MORNING
10-12
or by appt. call Clare 01483 728546
The museum is behind the new Ripley Village Hall
GU23 6AF
www.sendandripleyhistorysociety.co.uk

Meets on the fourth Thursday of the month from September to May at 20h00

All meetings free to members

£3 for non-members except where otherwise stated

See our website wsnhs.wordpress.com

15 December 2022 in EAST Horsley Village Hall
Christmas social and members' presentations

26 January 2023 on Zoom

The Unfeathered Bird: From Art to Zoology, a Story of Evolution – an illustrated talk by Katrina von Grouw, University of Cambridge. Katrina discusses evolution and adaptations in birds, as well as her personal evolution from artist to scientist. Informative, inspirational, and often very funny, she talks in particular about her 25-year journey to create her magnum opus, The Unfeathered Bird.

23 February 2023 on Zoom

The Natural History of Upper Teesdale – an illustrated talk by Andy Sands.

Andy has been photographing wildlife for over 30 years, specialising in British subjects. He has had a life-long interest in natural history and his subject knowledge will come across in the presentation. Upper Teesdale is a place Andy has visited on many occasions over a 20 year period. It is an area of outstanding natural beauty, primarily upland farms and hay meadows surrounding managed grouse moors. The ancient hay meadows have a rich flora unequalled anywhere in the UK. The talk covers the wildlife of the dale mammals, insects and birds as well as the habitat of the area.

RIPLEY Diary of Events

2022/23

Church Services are on the Church pages

December

3rd	Sat 2.30pm	Over 60's	Ripley School
Every	Weds 10-12	Coffee Morning	Church Rooms
10th	Sat 9-1	Farmers Market	Ripley Green

January

7th	Sat 2.30pm	Over 60's	Ripley School
Every	Weds 10-12	Coffee Morning	Church Rooms
14th	Sat 9-1	Farmers Market	Ripley Green
18th	Thurs 7pm	Parish Council	Victory House

February

5th	Sat 2.30pm	Over 60's	Ripley School
Every	Weds 10-12	Coffee Morning	Church Rooms
11th	Sat 9-1	Farmers Market	Ripley Green
15th	Thurs 7.30pm	Parish Council	Victory House

Send Remembrance procession.



Wills & Smerdon 1933

Sales | Lettings | Management

Thinking of moving or just wish to get an idea of the value of your home? Then please contact Gary for a FREE market appraisal from the property experts in your local community



T | 01483 224 343
W | willsandsmerdon.co.uk
E | ripley@willsandsmerdon.co.uk
P | Aberdeen House, High Street, Ripley, GU23 6AQ



Ripley Bonfire was Back
in full force!



The bonfire well and truly
ablaze!



Our Queen Diane Dean and her
attendants, Charlie and Lillie.

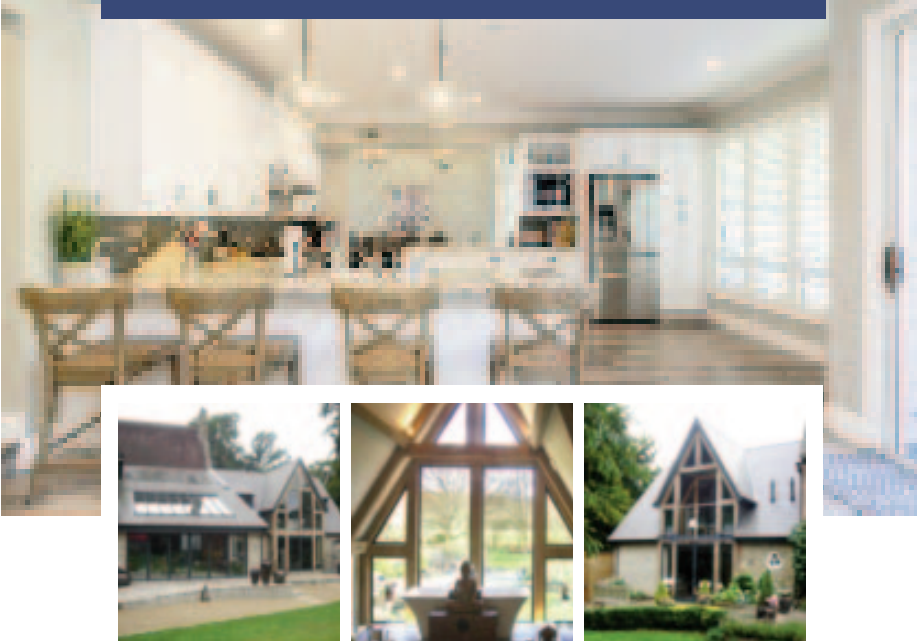


A group of our intrepid collectors!



Families happy to see the bonfire back.

THINKING OF EXTENDING YOUR HOME?



CIM SERVICES: HOME DESIGN WITH YOU IN MIND

Architecture and Project Co-ordination

Architectural Practice based in Send, near Guildford. Specialising in creative architectural design and experienced in planning and building construction.

Whether you would like to extend your property, convert your loft or garage or develop a plot of land, we can help you get approval from your Local Planning Authority. We can advise you about the maximum development options to increase the value of your home and we will create a functional, aesthetic, practical and cost effective plan for your budget.

FREE INITIAL SITE VISIT AND CONSULTATION

For more information get in touch

info@cimservices.co.uk
www.cimservices.co.uk
07977 071456

SEND Diary of Events 2022/2023



Church services are on the Church pages

December

7th	Wed 2.30pm	Over 60's	Church rooms
12th	Mon 10.00am	Charity Shop/Coffee Morning	Church Rooms

January

4th	Wed 2.30pm	Over 60's	Church Rooms
16th	Mon 10.00am	Charity Shop/Coffee Morning	Church Rooms
25th	Wed 2-4	Craft & Chat	Church Rooms

February

1st	Wed 2.30pm	Over 60's	Church Rooms
20th	Mon 10.00am	Charity Shop/Coffee Morning	Church Rooms
22nd	Wed 2-4	Craft & Chat	Church Rooms

Send Phone box for Remembrance Sunday



C. F. Hall & Co. Ltd.

We are your local Euronics electrical retailer,
established for more than 60 years.



EURONICS

Sony, Panasonic, Bosch, Samsung, Miele, Roberts, Sebo,
Toshiba, Dyson, Pure, Zanussi, Blomberg & many more top brands

2 Station Approach | East Horsley | 01483 282945
www.cfhall.com

Alan Greenwood & Sons

Independent Family Funeral Directors



*A choice of the latest Jaguar or Mercedes
Hearses and Limousines
Home visit arrangements
Pre-paid funeral plans and Memorials
Caring and Compassionate 24 hour Service
We will not be beaten on price
Direct Cremation Funerals £950 T&Cs apply*

2 Aldershot Road
Guildford
GU2 8AF

01483 567 845

66 Send Road
Send
GU23 7EU

01483 210 222

1 Anchor Hill
Knaphill
GU21 2HL

01483 487 889

Please Visit Our Website for Full Details of Our Branches and Services and to View Our Local Obituaries

www.alangreenwoodfunerals.com

RIPLEY AND DISTRICT HORTICULTURAL SOCIETY

Our ANNUAL SHOW was very well supported again this year and afternoon visitors enjoyed the display of vegetables, flowers and fruit as well as refreshments in the sunshine. Our competition plant this year was a chilli and the entries looked spectacular. Natalia Prykhodko, from Ripley, took some fabulous photos. Many gardening clubs have stopped their shows, hastened probably by the Covid restrictions in village halls. However, Covid prompted us to look at how the Show was organised and we now have a new format which works very well. Although only members can enter, it is a very enjoyable afternoon for visitors.

Our coach trip to KEW GARDENS was very well supported. We haven't had a coach trip for a while and we had a lovely day with good weather.

Our members had the opportunity to purchase half price seeds from Kings Seeds in September, a tremendous saving. You don't have to buy many packets of seeds to save the annual membership subscription!

Our Christmas Wreath making workshop will have taken place in November.

We are marking the Queen's Platinum Jubilee year by donating an apple tree to the Commemorative Community Orchard, which is between the graveyard and the Nature Reserve in Ripley. Sadly, the original apple tree did not survive and this is a replacement.

We have an interesting programme of events for 2023 with something on every month. We hold speaker meetings in February, March, October and November which are free for members and £3 for non-members. In May we hold a coffee morning and plant sale. During the summer there are local garden visits. The Annual Show is on the last Saturday in August. We strive to be as inclusive as possible and hope that everyone benefits from membership regardless of their horticultural knowledge or gardening ability. If you are interested in any aspect of plants, gardens or growing, do consider becoming a member. We have a WhatsApp group which is great for sharing photos or getting advice from other members.

Our membership year starts again in January and is only £7 per household. If you are interested in joining Ripley & District Horticultural Society, please contact our Membership Secretary Jan Jewers, or myself. Jenny Milligan Tel; 225073 or jennifermilligan@btinternet.com
Membership Secretary: Jan Jewers Tel; 222939 or janjewers@gmail.com

Send Remembrance
Sunday



- Commercial Property Agents •
 - Surveyors and Valuers •
 - Development Consultants •
- Land and Planning Consultants •
 - Property Managers •

(Residential inc. block management and Commercial)

Contact : Andrew Russell Bsc [Hons] MRICS Director
Email: andy@gascoignes.com

2 Gillingham House - Pannells Court - Guildford - Surrey - GU1 4EU

AGENCY • PROFESSIONAL • LAND • MANAGEMENT



During the past three months we have made many donations to worthy causes; the major ones to Woking Strokeability, who support local people who have suffered a stroke, and the Villages Medical Centre Patient Participation Group. We have also run two free first-aid courses to train people to use the defibrillators we have installed in Send.

We now need to replenish our funds and we again sponsored the successful Send Get Creative craft fair in October.

This year we plan to again run the very popular Santa house-to-house collections in Send in December; 12 December Burnt Common, 14 December Send Hill, 15 December Send Marsh.

This can only be carried out with the help of our volunteers. If you can spare a couple of hours in the evening and would like to take part in this very rewarding activity, please contact me. Rotary Santa will also be at the Farmers Market and outside of Ripley Coop in December.

While the Rotary Club of Ripley & Send support many local organisations, Rotary is the largest and most successful global humanitarian service organisation with 1.4 million members worldwide.

If you are interested in any of our Rotary activities and would like to know more please contact me at gillcolbeck@aol.com.

Gill Colbeck
President
Ripley & Send Rotary Club



Ripley School

We are delighted to advise you that the Department for Education (DfE) has decided not to make a Section 554 Order, requested by Guildford Diocese – meaning that control of the site remains with our local trustees and community.

Thank you so much to each and every person who made an objection – we are so grateful. The overwhelming support from our community no doubt played a large part in informing the DfE in their decision to not make a Section 554 Order.

We remain committed to securing primary education on the site for future generations. More info on our next steps will follow shortly!



As I write this editorial, less than a week after the event, the weather is foremost on my mind and whilst it is still raining outside, I look back to last Saturday, no rain and balmy temperatures in the mid 20s. The weather was also kind to us for the four weeks of building and preparations, although we did have one Sunday morning which was a complete washout, for which our band of bonfire builders worked on through, even the tractor was having to work with headlights on.

Events like ours do not just happen and I would like to thank all those involved in putting on a tremendous evening, especially after three years of absence. In particular I thank the following individuals; the Bonfire Builders, the Marshals, the Collectors, those manning the two car parks, the Committee and those that assisted us in a variety of ways. Thanks also go to our Sponsors, our Advertisers, the Traders, Dynamic Fireworks for a fantastic display and of course the Bensons Family.

With our costs rising considerably from previous years, it was essential we had a good evening and whilst we are still counting and preparing our accounts, I am pleased to announce that our main source of income, the street collections made just short of £10,000, a fantastic effort by our collectors, but more importantly a tremendous display of public generosity, for which you the residents of Ripley and Send I sincerely thank you, it really does matter.

As a result of your generosity we shall be able once again to support some of our village organisations, as well as hopefully our nominated charities, Woking Hospice, Surrey Air Ambulance, S.E.R.V. and S.S.A.R.

I am also sure that in the coming months we, as a committee, shall be having discussions about next year's event and with the prospect of costs rising even further, for which we are already expecting a rise in the cost of the fireworks of around 40/50%, our reserves are essential to the future of this event as is your continued support.

Again thank you for your generosity and support and hopefully see you on Saturday 28th October 2023.

Steve Hill, Chairman Ripley Bonfire Association.

SEND GARDENING SOCIETY

In August, we met for our annual garden picnic in a member's garden. The sun shone and members sat amidst a beautifully maintained and established garden whilst sharing food and drink – a lovely way to spend a summer afternoon.

In October, the wreath making demonstration went extremely well and all workshop attendees went home with an impressive personalised wreath. The tutor distributed detailed printed guidance notes to be used as a recipe for future wreaths for any occasion. It was a very enjoyable and social evening and we were all delighted to learn a new skill.

The AGM on December 7th followed by our Christmas Social and Quiz will be the final meeting from the 2022 programme.

Looking forward to 2023, our first meeting in February will be a talk on Summer Bulbs by Tim Woodland. Tim runs a bulb sales company and also works for a Dutch bulb company so has plenty of current knowledge and



CompletelyPC
Home & small business computer support

Home visiting computer repair & installation service
Help with all your screens and buttons
Virus removal and protection
Broadband issues (including showing your supplier!)
iPads, tablets and phones
Wireless printing
Help with choosing new equipment
Set up of new equipment including transfer of data etc
Safe removal and disposal of obsolete equipment

£60 per hour

Jon Kitcald
01483 856015 or 07941 885817
jon@completelypc.co.uk
online booking: <https://completelypc.yourbook.me>



Bring a little luxury into your home

For all your **Soft Furnishings**:
“Made to Measure” Curtains, Cushions,
Blinds, etc.
Alterations and Repairs undertaken

Friendly, reliable service
For help, advice and Free estimates
Call **Julie** on **01483 223871**

or
07792 211093
email: sales@thesilkroom.co.uk

The Silk Room

3 Cobham Cottages, High Street, Ripley

experience to share with us. There will be bulbs for sale, at discount prices on the evening.

Wednesday 1st February: Summer Bulbs by Tim Woodland

Put this date in your diary now – having been postponed from previous years due to covid restrictions – this long-awaited event promises to be an inspiring evening that may revitalise our summer planting schemes and give them new appeal.

Would you like to meet up once every 2 months with fellow ‘gardeners’ for a sociable and interesting evening out? We are looking for new members to join our society. We are a friendly bunch of amateurs who are always learning about gardening in all its forms and sharing local knowledge. Whether you have a window box or a vast area of land, please come and join us and share our passion. Club membership is neither expensive nor in any sense exclusive (£5 per person or £8 per household per year). We offer a varied and interesting programme of talks and demonstrations by well qualified guest speakers covering a wide range of topics, with an opportunity to put your gardening questions to the expert. These are also great social events where we talk gardening and trade seeds or gardening magazines. In the summer we arrange visits to places of gardening interest.

We can be reached by e-mail at sendgardeningassoc@btinternet.com, by phone on 01483 223952 (Chairman Robert Harding-Payne) or by coming along to one of our bi-monthly meetings which are at 7:30pm in the Church Rooms. We now even have a page on Facebook! Our meetings are open to visitors and our members are a broad spectrum from experienced to novice. We are known as a very friendly club and look forward to welcoming new members. So do come along and see what we are about – Linda Davis Committee Member.

“From December to March, there are for many of us three gardens - the garden outdoors, the garden of pots and bowls in



Ripley and District Horticultural Society Annual Show 2022



Taken by Natalia Prykhodko. <https://prykhodko.art>

A.C.K.

Automotive
Services

www.ackservices.co.uk



Tel. 01483 225373

- ✓ Vehicle Servicing
- ✓ All Makes of Cars & Vans
- ✓ MOT Test – Petrol/Diesel
- ✓ **FREE** Loan Cars (by arrangement)
- ✓ Full Bosch Diagnostic Equipment
- ✓ Fully Equipped Workshop
- ✓ Auto Electrical Service
- ✓ **FREE** Air-Conditioning Check
- ✓ Exhausts, Tyres & Batteries
- ✓ 4 Wheel Alignment Service using Hunter laser alignment equipment



10% DISCOUNT
On production of this advert

VISIT OUR WEBSITE AT
www.ackservices.co.uk
ack.eyles@btconnect.com



Portsmouth Road, Ripley, Surrey GU23 6EY

Contact Peter Eyles on 01483 225373

JB MOTORS

01483 222207

Your local garage with reliable, friendly service

Services include:



Servicing & Repairs to all makes



Latest computer diagnostic methods



Tyres, exhausts and batteries



Air conditioning servicing



Car valeting service



New and used car sales



92 Send Road, Send, Woking, Surrey GU23 7EZ

Email davidjbmotors@btconnect.com



www.jbmotorsmini.co.uk



Exceptional Care from dedicated people

Our team are cooks, carers, companions and housekeepers all rolled into one.

**Call us today
to find out more.**

-  Fully qualified care professionals matched to your needs and preferences
-  One to one support to maintain your independence at home
-  Simple transparent pricing, easily arranged care

01483 343 693

www.cphcare.co.uk

Down Your Wey

Since being off my feet for a while with a fractured ankle, it's been nice to get back to the river and catch up with all the trees, people and dogs I'd been missing. If I had to choose a time to be out of action, I suppose a very hot, dry spell was the best option. I am so grateful to my super-volunteer and colleagues for holding the fort. Just as I came back things sprung back to life with a vengeance. I've been doing my best to keep things under control.

Autumn is now in the air but after the unusual summer, it's hard to know what the season will bring. Those with boats and sleepless nights from the falling acorns will attest, there are definitely enough to keep the squirrels and jays very well fed this year. After not having any at all last year I'm sure they will be glad on the glut. I am always amazed the levels year to year fluctuate as much as they do but it keeps the predators in check and ensures there are never enough mouths and beaks to prevent a new generation of trees.

Those of you who regularly visit will see that the fish pass is now up and running. All the planting has settled in nicely and the plan is that the fencing will be removed in time. Following recent testing and tweaking the inlet levels, even following the drought, we are able to manage the water levels to keep it active. I can't speak to the fish levels yet, it is too early for that data, but the swans clearly love it. They have been hanging around almost every afternoon since we opened it. I hadn't seen them in a while and now I get to say hello every day which is lovely.

Emma Goodwin

07786 703834

Emma.goodwin@nationaltrust.org.uk



It continues to be a bizarre year weather wise and the current mildness for the beginning of autumn just doesn't feel quite right. The trees have been turning slowly with the willows, limes and hazels being some of the first to offer some yellow hues. The alders and oaks, which make up most of our trees will not be far behind. Usually, we would be expecting cooler weather to be ending the growing season soon but there doesn't seem to be any indication we can pack the mower away for some time.

My work seems to have adjusted this year a little as the Pennywort has migrated up onto my length. Floating Pennywort is an invasive plant that spreads over the water's surface and can block the river if not managed. It spreads upstream by getting snagged on boats or portable craft and fishing equipment. A small fragment can regrow into large rafts, so it is difficult to fully control. It has spread into the reeds from Papercourt right the way up to Send and I have had isolated patches near Worsfold too.

My volunteer group has been helping me keep the lock sides tidy and we have just begun some of the winter tree work on the non-towpath side and canopies over the towpath up towards Sutton Place. This clears the sightlines and maintains a good width for boats and towpath users. Soon we will be pollarding half the willows at Triggs, Papercourt and New Inn, to make sure the crowns don't get too heavy and promote new growth next year.

Hope you have an enjoyable festive season and see you on the river.
Chris Charman
07786 703833



Get Creative

Rotary



The third Get Creative event in Send, held at the Lancaster Hall on Saturday 29 October, was deemed a success by the organisers, visitors and stall holders alike!

This year there were even more tables to buy from, many of them with crafted items suitable as unusual one-off Christmas gifts. And there were more activities for visitors to get hands-on and create something of their own!

The figures can do the talking:

Unlimited enjoyment!

4 MCs to keep visitors updated

18 stall holders and their assistants

Between 200 and 250 visitors estimated

Around a dozen front of house volunteers

Perhaps a baker's dozen of home baked cakes and tray bakes on offer

7 thirty-minute demonstrations as well as some activity at stall holders' tables

One stall holder said that there was a nice atmosphere and that it was great to have so many crafting opportunities and a kids' table. Another noted, "There was a good range of crafts on display avoiding duplication". And several of them said they were looking forward to being invited back next year!

A group from Woking U3A's Singing for Fun group sang us out with a medley of Goodbye songs. One of our regular stall holders from Send said, "It's a real village day and lovely to see so many familiar faces; and loved the sing song!"

The Rotary Club will distribute the proceeds of £643 to local charities and organisations.

Advertise Your Business Here!

Our next issue is out March 2023

Please Email;

randsmatters@icloud.com

K.Warren

General Builder & Plasterer
All aspects of building and plastering undertaken from small rooms to extensions.

References available



Tel 01483 479370
07814 361260

Aldridge Ironing Service

*Great rates
Established 1999
Regular or one off
Excellent references
24hr/48hr turnaround
Free local collection and delivery*

Please see our website for prices and info



www.aldridgeironing.co.uk

01483 210229

aldridgeironing@gmail.com

Donner Optometrists

Home Or Away
Protect & See Better

Sunglasses From £59



9 Church Road, Bookham, Surrey KT23 3PD

T: 01372 458318

E: bookham@donneroptometrists.co.uk

It has been a busy year for the committee, with many new initiatives from our first Parish day to test the waters to organising all the additional decor throughout the many celebrations which have taken place this year. We have lots of things to come in the next few months. We will be providing additional Christmas decorations throughout the village once again.

The first Parish day was a success and we are currently planning next years to be bigger and better. With this in mind we are going to be doing an auction with Ewbank's auctioneers to make sure we can once again provide this as a free event for the village. Please check out our social media channels to get involved and help keep this free of charge. Instagram and Facebook both 'Ripley village surrey'.

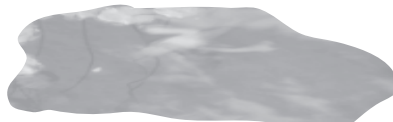
We now have 24 businesses as members and two new members who will be added to our website in due course.

The Ripley Business Association Committee.

Sign up to our newsletter for more events and activities www.discoverripley.co.uk

DAVID SMITHERS
POND MAINTENANCE & CONSTRUCTION


ALL ASPECTS UNDERTAKEN, INCLUDING COMPLETE DRAINDOWN,
CLEANING, PLANTING AND REPAIRS TO PONDS OF ANY SIZE.



TO ARRANGE A FREE ESTIMATE PHONE
01483 374620 (EVENINGS)
07732 541057 (MOBILE)

VISIT OUR NEW 1500sq ft showroom WITH:

- OVER 250 LUXURY FLOORS
- OUTSTANDING COMPOSITE DECKING
- RANGE OF CLADDING SYSTEMS



Your local Independent Builders Merchants

CALL 01483 921040 **EMAIL** sales@alfiambuildingsupplies.co.uk

OPEN Mon - Fri 7.00am to 17.00pm - Sat 8.00am to 12.00pm

WWW.ALFIAMBUILDINGSUPPLIES.CO.UK



VISIT TODAY Unit A, Burnt Common Distribution Centre, London Rd, Send, Surrey, GU23 7LN

Advertise Your Business Here!

Our next issue is out March 2023

Please Email;

randsmatters@icloud.com

Send Electrical Services

At Send Electrical Services we offer a full range of domestic electrical services provided by our fully qualified Electricians.

Work we frequently carry out includes:

- Kitchens and Extensions
- New Builds
- Rewires and refurbishment
- Fuse board changes
- Additional electric points
- Garden & outside lighting
- TV, telephone & network cabling
- Boiler & control wiring
- Burglar & smoke alarm systems
- Testing & inspection

Tel: **0800 689 0017**
 Email: info@sendelectrical.co.uk
www.sendelectrical.co.uk

ZOEY HACKNEY

PROFESSIONAL PAINTING & DECORATING

Qualified and fully insured

- Local recommendations
- Free, no obligation quotations
- **Reliable, skilled, friendly**

30 GROVE HEATH NORTH • RIPLEY • WOKING • SURREY • GU236EN

TEL: 01483 222830 • MOB: 07721 455554 • EMAIL: ZOEYHACKNEY@BTINTERNET.COM

F & S Heating and Plumbing Services

01483 225385 or 07711 191585



Small family run business
Call Frank or Suzanne

Central heating

Boiler servicing, repairs and replacement

Cooker, hobs and fires

Landlord Certifications

Bathroom installation/refurbishment



Email: info@fshps.co.uk

www.fshps.co.uk

13 Sengkham Close, Sand Mark, Ripley, Surrey, GU23 9BE

Guildford Fuchsia Group

We are always wanting to recruit new members who are interested in all forms of gardening. Although we try to promote growing the fuchsia, we have a varied programme throughout the year to cater for all interests. We are affiliated to both the British Fuchsia Society and the RHS.

We meet at the Guide HQ in Nightingale Road, Guildford, which has its own car park, on the fourth Tuesday of each month(not December) at 7.45pm. Currently our annual membership fee is £10 per year plus £2 each meeting attended(includes refreshments).

At the present moment we are meeting on a casual basis until into the New Year, but then we hope to meet regularly and get a programme organised.

Further information from our website www.guildfordfuchsia.co.uk or direct from our treasurer (see inside back cover) or email enquiries@guildfordfuchsia.co.uk

Ripley Over Sixties Club

Ripley Over 60's will be meeting again every first Saturday of the month throughout the year.

We will now be meeting at Ripley Primary School at the usual time of 2.30pm. We have a full programme of entertainers for the year.

It will be lovely to see old friends once again or any new members. We are also looking for a new chairperson. Please contact Edna to apply and for any queries.

Edna Millis, Chairman

01483 225483

SEND OVER 60'S CLUB

We are a friendly group in Send the Over Sixties, each month we have an interesting speaker a Raffle, Bring & Buy also tea & cakes a Summer outing and Christmas afternoon tea. We start at 2.30pm best to come a little earlier to get settled.

Come and try us I'm sure you will enjoy your visit and perhaps want to join us. It's the 2nd Wednesday of each month so hope to see you there!

Sally Legerton, Chairman - 01483 223542.

-

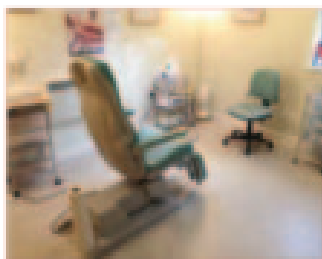
Woking Chiropody and
Foot Health Practice Limited

01483 833078
info@wokingfoot.co.uk



SURGERY AND VISITING PRACTICE

78 Westfield Road
Woking
Surrey
GU22 9NG



Call 01483 833078 for an appointment – opening hours Monday-Friday 9am – 7pm

Rosalie Bennett MScCh MBChA
(HCPC Registered)

Richard Bennett BA (Hons)
MCFHP MAFHP



Muddy Paws

Dog Grooming

Merrist Wood trained dog groomer,
located in Send Marsh

Providing a safe and comfortable environment
to give your dog an enjoyable grooming experience

Bath & Blowdry, Full Groom, Hand Strip, Nail Trim

Rescue Dogs Welcomed

Call or text Kim on
0788 237 2120

muddypawsgrooming@icloud.com

@SendMarshGrooming @muddypaws_grooming_service

City & Guilds
Qualified

Send Evening WI

We meet on the 4th Wednesday of the month, 8pm, at the Church Rooms in Send. The monthly meetings are always interesting and on many varied topics.

We also have coffee mornings, rambling group, book club, theatre trips and outings to places of interest. You will find us a very friendly group so if you are new to the area or looking for a new interest or to meet new people - do give us a try.

Contact Judy on 0792 6049255 or Jenny on 07906747344



Ockham & Ripley WI

We meet on the 1st Wednesday of each month at Ripley Bowls Club, Rose Lane at 7.45 and close at about 9.45 after a light super. We have a varied and interesting programme each month, also a yearly Warner break, book club, film afternoons, theatre trips, crafting, rambling and visit places of interest. We are a small friendly group. If you are looking to join a WI come along and meet us. For further details contact Lesley 01483 225125 or Lynne 01737 214805.

Ripley Nurseries Garden Centre Farm Shop

For all your
Christmas
Fayre

01483 225090



www.RipleyNurseries.co.uk



SEND VILLAGE CLUB

It seems like the year has gone by very quickly, it has been great to host members parties and have club events. On the 19th September we had 'Send Grand National' hosted by Hughie, absolutely brilliant evening raising £100 for Farncombe Day Centre.

Unfortunately the club required some prompt and costly attention to the roof over the cellar and committee room which we are pleased to say has now been completed. We have also undergone an upgrade to our cellar and dispense equipment which was long overdue.

We are continuing to put together events for our members. Our regular monthly bingo is very popular we have introduced a snowball cash prize and raffle a free bingo book for one lucky player next time. Looking forward to December on the 3rd we have live music from Decades, on the 10th Bingo, on the 17th Christmas Raffle, on the 24th Christmas Eve disco. We will finish the year with a New Years Eve party on 31st. Our Christmas week opening times will be displayed on the noticeboard and on our Facebook page along with all event information.

We also welcome back our dart teams for the new season and wish them luck.

Memberships for 2023 will fall due on the 1st January, new members always welcome.

Finally thank you to all our members who continue to support our efforts and use the premises. The Committee are a voice for every member and are always happy to receive ideas, comments and help.



Dale Barratt MCFHP, MAFHP Foot Health Practitioner

01483 479350 / 07931313875

I am a foot health practitioner, and treat the following:

- * Corns and Callus
- * Fungal Nail Infections
- * Ingrown and Involuting Nails
- * Care of the Diabetic and High Risk Foot
- * Athletes Foot
- * Specialised Nail Cutting
- * General Foot Maintenance

If I can be of any assistance, please call for an appointment



SOLICITORS



hlewis@arthurlegal.co.uk



Tel: 01483 222499
Fax: 01483 222766
Web: annaarthur.com

ANNA ARTHUR & ASSOCIATES SOLICITORS
FIERI, FACIAS HOUSE, HIGH STREET
RIPLEY, SURREY, GU23 6AF

Divorce & Separation
Child Contact & Finances
Co-Habitation Agreements
Residential Conveyancing
Company Matters
Commercial Property
Wills, Probate & Trusts
Lasting Powers of Attorney

By Appointment Only
There is office parking
(By Prior Arrangement)

Horsley Choral Society

Horsley Choral Society Christmas Concert - Rejoice!

Horsley Choral Society will be performing Handel's Messiah Pt I together with Christmas carols for all on Saturday 10th December at St Andrew's Church, Cobham. The choir will be joined by four wonderful soloists; Jane Searle (soprano), Elizabeth Searle (mezzo-soprano), John Upperton (tenor) Richard Webber (bass) and Matthew Rickard (organ/piano). The concert starts at 7.30pm and tickets are available from the HCS box office (01483 282267 / 07444 722318), from members or at the door. HCS welcomes new members of all voice parts. Spring term starts Monday 9th January 2023 at East Horsley Village Hall - 8pm. No audition is required. Come and try some free taster rehearsals. For more information Visit www.horsleychoralsociety.com Email: secretary@horsleychoral-society.com Call 01372 457987



Dog Days
ADVENTURE & DAY CARE CENTRE

DOG DAY CARE CENTRE

- Secure and fun environment in a countryside location
- Acres of fenced fields for play with like-minded doggy pals
- Constant attention assured from a professional caring team
- Ad hoc or regular bookings welcome
- Flexible and reliable service

Your dog couldn't wish for a better way to spend his day!

10% DISCOUNT OFF FIRST DAY

Please call us on:
07557 797917

w: dogdaysadventure.co.uk



Voo Veterinary Group

Voo Vets Ripley
The Old Saddlery, High Street,
Ripley, Surrey GU23 6AN
Tel: 01483 222212
24hr Emergencies: 07714 295844

Helping you and your pets live life to the full...

As a family owned and run group with an established local history, we are friendly, caring and approachable. We love looking after the local pet community, and take a great deal of pride in being able to make a difference to you and your pets.

Our Ripley practice offers consulting and minor procedures, with surgeries and diagnostics performed by the same team at our Cobham and (new) Pyrford Practices. Complimentary transport is available, if needed. Our hospital in Surbiton provides support for more complex cases, specialist and 24hr emergency services. **Our hospital team provides 24hr care, so your pet will stay with us until they are better, and well enough to return home.**

We offer a wide range of services including:

- Free 2nd Opinions
- Free Health Checks
- Affordable Healthcare Plans
- Free advice and support in choosing a pet to join your family
- Headstart for puppies and kittens (everything you need up to 6 months, including free, unlimited consultations, for just £139)

For **25% off** your first treatment please quote: **VOOMATTERS25**

Please see our website for more details, or pop in to meet our team. **We'd love to see you!**



welovevoo.com



Follow us on social media to be kept up to date with news and events

Send Organisations

Advanced Motorists Local Group (John Panting)	07999 338616
Conservative Association (Alex Stewart Clark)	07710485264
Horsley & Send Cricket Club	www.horsleyandsendcc.co.uk 285322
Lancaster Hall Bookings	lancasterhallsend@gmail.com
Mothers Union Send (Beth Shutt).	222193
Over 60's (Sally Legerton).	223542
Parish Council (Nichola Mair)	479312
Rotary Club (Gill Colbeck.	762076
SADS (Caroline Croucher)	07887521684
Send & Ripley History Society	helena_findenbrowne@compuserve.com
Send Evangelical Church (Pete Killingley).	01483 728633
Little Lambs Toddler Group	littlelambs@sendec.org
Send Gardening Society (Robert Harding Payne).	223952
Send Scouts (Tony Maine).	sendgsl@yahoo.com
Send Get Creative(Linda Parker Picken)	lparkerpicken@Yahoo.com
Send WI (Judy).	0792 6049255
Send Arts & Crafts	sendartsandcrafts@gmail.com
Send Guides (Nadine)	Gibson....SendGuides@gmail.com
Brownies (Sally Daboo)	sallydaboo@hotmail.com
Rainbows (Vanessa Gough)	01372 375198
Send Help	225255
Send Social Club (Lucy Truscott)	224652
Send united FC (Simon Long)	sufc.chairman@gmail.com

Disclaimer: In no event shall Ripley & Send Community Publishing Association (R&SCPA) be liable for any special, direct, indirect, consequential, or incidental damages or any damages whatsoever, whether in an action of contract, negligence or other tort, arising out of or in connection with the use of the Service or Products of the Advertisers. R&SCPA accepts the advertisements in good faith and does not endorse any Service or Product provided by the Advertisers.

Ripley Organisations

Advanced Motorists local group (John Panting)	07999 338616
Bonfire Association (Steve Hill)	07774 177771
Cricket Club (Steven Cliff)	225512
Elmbridge Model Club (Tony Handley)	07876 030930
Farmers Market (Sally Erhardt)	223861
Christmas Fair (Jim Morris).	224847
Fuchsia Group (Jean Denness)	07867 564090
Horticultural Society (Jenny Milligan)	225073
Over 60's Club (Edna Mills)	225483
Papercourt Sailing Club	info@papercourt-sc.org.uk 223904
Parish Council - Parish Clerk (Jim Morris)	224847
Probus Club (Les Brown)	223024
Ripley Bowls Club (John Phillips)	225437
Ripley Pre-school	223230
Rotary Club (Gill Colbeck)	762076
Royal British Legion Social Club	224616
Ripley Scouts - Chairman (Mark Gaplin)	chairman@riplescouts.org.uk
Group scout leader (Kevin Yeo)	gsl@riplescouts.org.uk
Cubs (Sarah Harrison)	csl@riplescouts.org.uk
Beavers (Justine Ayears)	bsl@riplescouts.org.uk
Scout Marquee Hire	marquee@riplescouts.org.uk
Scout Hall Hire	hallhire@riplescouts.org.uk
Village Hall Bookings (Trish White)	0774 8531275
West Surrey Nat. History Society	emkingston@btinternet.com
Ripley Good Neighbours	01483 210007
Send & Ripley History Society	helena_findenbrowne@compuserve.com
Ripley Business Association	hello@discoverripley.co.uk

Realism QUALITY Seymours
Customer Service Professionalism
5 star! Great advertising
Recommend
first class Estate agents
Happy fantastic Send Market
Exceeded expectations leader
Seek them out Knowledgeable

Our reviews **Speak** for themselves...

All of the words above were used by our community to describe our team and our services. If you are thinking of selling your home, choose an agent your community trusts, **Seymours**.

Ripley

188 High St, Ripley, GU23 6BD

Tel: 01483 211644

seymours-estates.co.uk



Seymours

Your property partner for life