



RIPLEY & SEND
Matters
Autumn 2022

A NOT FOR PROFIT MAGAZINE PRODUCED AND
DISTRIBUTED BY VOLUNTEER RESIDENTS
ISSUE NO. 118

Useful Numbers

All telephone numbers given throughout this publication are under the Code 01483 unless they are mobile numbers beginning with a 0.

Ripley Councillors & Parish Council

Guildford Borough - Colin Cross 224107

Surrey County - Colin Cross.....224107

Ripley Parish Clerk - Jim Morris..224847

E-mail clerk@ripleyparishcouncil.gov.uk

Web: www.ripleyparishcouncil.gov.uk

Send Councillors & Parish Council

Guildford Borough - Susan Parker203167

“ “ - Margarida(Guida)Esteves

Surrey County - Robert Hughes

Send Parish Clerk - Nichola Mair479312

E-mail clerk@sendparishcouncil.gov.uk

Web: www.sendparishcouncil.gov.uk

Guildford Borough Council 505050

Surrey County council 518800

SCC Call centre (Highways etc) .03456 009 009

Local Police101

Villages Medical Centre 226330

Boots Pharmacy222162

Ripley Good Neighbours 210007

Send Help225255

Hospitals - RSCH inc. Farnham Road . . 571122

Recycling hotline445084

Dog line505050

RIPLEY & SEND Matters

This magazine is produced and published by Ripley & Send Community Publishing Association - an organisation of most of the clubs and societies of Ripley and Send. It is distributed free of charge in the Ripley, Wisley and Send area.

The Production Team

Editor Andy James:

E-mail:

randsmatters@icloud.com

Distribution - Ripley

Jennie Cliff 224051

Send

Jean Sandell 222903

Secretary

Jan Carter 224221

Committee: Mike Baker,

Jean Turner, Janet Manktelow

Alan Sandell, Rowland Cornell

Ripley & Send Matters is copyright

2022 of Ripley & Send Community

Publishing Association

Printed by BISHOPS PRINTERS

023 9233 4900

Next Issue...

Please email your news or publicity material to me or send to, Andy James, Eden Lacy, Portsmouth Road, Ripley GU23 6ER by 24th October, for the next edition due out 1st of December. Please note, I may have to edit your material or even leave your item until a later edition.

However if you have items between editions that are urgent, please email me so they can go onto the website: www.ripleyandsendmatters.org.uk A PDF edition of the magazine is also now available to view.

Hello Dear Reader,

It is time again for us to share the many events with you that have happened over the last few months, and those to come as Autumn draws in.

There was a real community spirit in both villages throughout the summer, with Jubilee celebrations in both, our inaugural Ripley Parish day and of course the hugely successful Send Open Gardens which raised over £4000 for local good causes. Well done for everyone that volunteered and gave so much time and energy for all these events. Community events such as these just wouldn't happen without villagers giving up their spare time to bring these events together and often involve many months of planning. So with that in mind I would like to thank you all for your amazing efforts! If you would like to help and support your village, please pop along to Ripley Parish Council volunteer evening. See page 15 for more details.

As I write this short editorial, it is currently 32c outside, and many local Authorities have issued a Hosepipe ban. With global warming truly having an impact on our daily lives, it is time for us to think about how we can all become greener, from water conservation for our gardens, to waste and recycling. We all have to make some changes now and do our bit to help reduce our impact on the planet. I would really like to find any new contributors who have knowledge in this Field and would like to write a regular column on "Green Issues" with hints, tips and great ideas on how we can make small changes in our daily lives. If that sounds like you, please drop me an email by the beginning of October so we can work on something for the Winter edition.

I am sure you are all looking forward to the beauty of Autumn as am I. Especially cooler days and evenings and some rain! This time of year is also for me a time of review and reflection. I look at my garden and work out what has and hasn't worked for me and start to plan for the spring, removing unwanted plants and giving to friends, planning new flower beds and working on garden structure. And after the last few months of celebration and activities in our villages I was just thinking how extremely lucky we all are to live in these two wonderful villages with such community spirit!

Andy James - Editor

INSIDE THIS ISSUE -

YOUR VILLAGE NEEDS YOU!	P15
Dunsborough Park	P26
Send Get Creative	P38
Send Open Gardens	P50

Free valuations 9am-5pm every
weekday



Ewbank's

Surrey's Premier International Antique & Specialist Auctioneers



The Phil Easton Puppet Collection: 9 September
Cars, Motorbikes, Scooters & Automobilia: 20 September
Jewellery, Watches & Coins: 21 September
Silver & Fine Art: 22 September
Antiques, Clocks, Books, Stamps & Antique Furniture: 23 September
Trading Cards & Vintage Video Games: 29 September
James Bond 60 Years of 007: 6 October
Decorative Arts: 26 October
Contemporary Art: 26 October
Asian Art: 27 October
Vintage Fashion & Handbags: 27 October
Toys & Models: 10 November
Entertainment & memorabilia: 11 November
TLC Deck of Cards, Charity Art Auction: 2 December

**Valuations for sale,
probate and
insurance**

Phone: **01483 223 101**

Burnt Common Auction Rooms, London Road, Send, GU23 7LN

antiques@ewbankauctions.co.uk

ewbankauctions.co.uk



At the time of writing, we are experiencing an unprecedented heat-wave of over 40 degrees – I sincerely hope that the rest of the summer reverts to more normal temperatures with a bit of rain for our gardens and the Green! Mind you by the time you read this, we will no doubt be going through a biblical flood....

The sunshine for the early part of summer was a real boon for some of our village events, in particular The Queen's Platinum Jubilee and Ripley Rocks, both of which were very well attended and enjoyed by many, particularly in the case of the music festival after a 3 year hiatus. Well done to all those volunteers who make these fantastic events happen, for the benefit of all.

Ripley Bonfire will also make a welcome return on Saturday 29th October, no doubt back to its best pre-Covid days, with all the fun of the fair! Another date for your diary is the Ripley Christmas Event which will take place on Sunday 4th December. It has been decided that the Fair will remain in its new location on the Green but with more impetus to create a festive atmosphere. Parking issues have also been addressed with the bottom field on the green opened up for the day.

The official retirement of our vicar Rev Chris Elson marks a major change for the village. Chris has been at the heart of Ripley for many years and will be sorely missed. We thank him most sincerely for his time and commitment to the church and community. I am sure you will join me in wishing Chris and his family every happiness in his retirement.

Some good news regarding the public loos on the Green. Ripley Parish Council negotiated with Guildford Borough Council to take over ownership and day to day running of this much needed facility,

to prevent it being permanently closed. Your team of Councillors worked quickly to ensure that the transfer was seamless and very cost-effective to the community.

The permanent removal of the free dog poo bags following a trial period does not appear to have adversely impacted the state of the Green. We are pleased that this cost-cutting measure has been a success for both our residents and other users of the Green.

The Parish Council has also had some very constructive discussions with National Highways regarding traffic calming measures for the four entrances to the High Street. The major works at M25 J10 commence in September and are estimated to be ongoing for 3 years. Clearly Ripley will be detrimentally impacted by this huge construction project (although we are assured that NO works traffic will be allowed to access any of the sites via Ripley itself) and there is funding available to mitigate the impact. We aim to negotiate the best deal for Ripley, and our next scheduled meeting is in October where we intend to agree a schedule of approved work with Highways.

At the time of writing there is no news as to when the construction work of Phase 1 at Garlick's Arch is due to start. We anticipate that there may be a planning application for the proposed on-off A3 ramps at Burnt Common in the Autumn, more news to follow as and when we are consulted.

Finally, my sincere thanks to Cllr Richard Ayears for his Chairmanship over the past 18 months. Cllr Rowland Cornell is now Vice Chairman. We have a strong team of parish councillors, with a healthy mix of skill sets and interests, who aim to serve their community with integrity and humour!

Cllr Suzie Powell-Cullingford



SEND PARISH COUNCIL

It is currently mid-July as I write these words from my parched garden, watching my plants wither in the heat. I hope you all had a lovely summer.

Perhaps the most memorable event in the village over the past few months was the Jubilee Fair held on the Recreation Ground. The Fair was well attended and it was lovely to see residents of Send laughing, dancing and playing in the sunshine. Huge thanks to Ripley and Send Rotary Club and the Send Scouts for the dedication and energy in organizing the Fair.

The Recreation Ground not only provides us with a central place to hold community events such as the Jubilee Fair, but is also a lovely area for villagers on which to exercise and play throughout the year. The Recreation Ground was given to the people of Send by local benefactors just over 100 years ago to strengthen the health of the village community after World War 1. A charity was created to oversee the use and maintenance of the Rec and the Parish Council was appointed as Trustee. Over the years the Parish Council have made improvements to the park by building a small pavilion, providing a public convenience adding play equipment and adult gym stations whilst keeping the feeling of open space in the centre of our village. A couple of years ago Guildford BC awarded us a Gold Award in recognition of the high standards on the Rec.

The Parish Council have recently been given external funding to improve the Rec. In late 2021 we conducted a village survey to explore what changes you would like to see. Sadly I need to report that we will not be able to construct an Olympic size swimming pool!.....but I like the ambition!

In summary the most frequent comments were:

Much support for the redevelopment of the pavilion into a community building....perhaps with a cafe and a new Parish Council Office.

Most people are happy with play equipment.

Teenagers are well provided for.

Some dissatisfaction with public toilet provision.

The external gym equipment is popular,

Cycle racks should be provided (although car parking provision was rejected as unnecessary by many people),

Using your responses, we are working to produce a plan and we will update you on a regular basis.

This is a good time to thank the silent and sometimes invisible villagers who just do things to make Send a better place to live. Somebody keeps Cartbridge smart by removing weeds, litter and overgrown trees. A number of litter fairies with litter pickers clean up our roads. I met a resident trimming a hedge along a well-used path in a field because he saw somebody having difficulty accessing the field. Volunteers on the Wey paint the bridges and maintain the beauty of the river for us to enjoy.

SEND PARISH COUNCIL

To have such people in our village is a real gift and is a sign of a healthy and caring community. Every small gesture makes a real difference!

An important role of the Parish Council is to support our voluntary groups in the village. Each year we consider applications from any group in the village and make grants which allow them to continue to help.

Recently we made grants to :

Send Help to go towards the cost of their 25th Birthday celebration which brought together clients for an afternoon of fun and singing.

Send Scouts to support a scout from the village to attend an international Jamboree.

Send Guides to purchase a range of essential equipment.

Ripley and Send Rotary Club to help with the cost of the Jubilee Fair.

If you want to do something for the village the above groups are always looking for new volunteers. All their contact details are listed in this publication.

I am delighted to be able to report that the Parish Council has filled a Councillor vacancy by co-opting Arthur Thomas. Arthur has lived in the village for many years and has previously served on the Council so comes 'oven ready'.

Next May the Parish Council holds elections and will look to have 9 Councillors. Have you ever considered putting yourself forward as a Councillor? Personally I have enjoyed my time on Send Parish Council and found it rewarding. We have many things going on in the village which touch villagers' daily lives and which as a Council we can influence. Our work on planning issues is a good example. The development of the Rec is another. If you would like to know more about the role of a Parish Councillor please contact our Parish Clerk Nichola Mair who will be pleased to answer any of your questions.

We have made a pledge to plant 70 new trees in the village in recognition of the Queens' Jubilee. Over the year we have asked for your views as to where we should plant the trees. A plan has been drawn up and we hope to be out and about planting over the autumn period. An example of what we are planning will see the addition of trees along the A247 from the Waitrose roundabout to the triangle opposite the Villages Medical Centre. Also along this road we will encourage wild flowers and plant some daffodils. We may be looking for your help in planting these!! The trees in the village enhance our village so we are pleased that we can add to their numbers and celebrate the Jubilee at the same time. All of your Parish Councillors wish that you all have a lovely and healthy end to the year.

Phil Beddoes

Chairman

Send Parish Council

Philip.beddoes@sendparishcouncil.gov.uk



Ripley Pre-School

- Purpose built modern setting with free flow access to large garden and school playground
- Term time only, every week day from 8am to 5pm
- FEET funding for 2 year olds and 15 hours for 3/4 year olds
- 30 hours funding available
- Fully flexible sessions
- Experienced, well qualified staff
- Charitable status
- Rated 'Good' by OFSTED in 2018

For information contact Clare Grimes
(Manager)

Email: info@ripleypreschool.co.uk

Mobile: 07807 703002

Telephone: 01483 223230

Ripley Pre-school
Wentworth Close
Ripley
Surrey
GU23 6ED



CLAREMONT FAN COURT SCHOOL

'A school where you can be you'

An independent, co-educational school for 2nd- 18 year olds, set in 100 acres of greenbelt in the heart of Surrey. Book on to an open day at:

claremontfancourt.co.uk



Jepsen & Co. Solicitors

Your local solicitor providing efficient and personal service

- Residential conveyancing
- Wills
- Lasting Powers of Attorney
- Probate

Please contact Mrs Rica Jepsen
65 East Lane, West Horsley
Surrey KT24 6LR

Tel: 01483-281720
Email: rica@jepsen-law.co.uk

Rosie Haxton

MCSP, HCPC, GRAD DIP PHYS

***Chartered
Physiotherapist***

***Recognised by Health Insurance
Companies***

**21 Bramble Way
Sendmarsh
Surrey
GU23 6LL**

07986158001

**Experienced in:
Back, Neck and Joint Pain
Sports Injuries
Hand Therapy**

CHURCHES

The Parish Church of St. Mary the Virgin, Church Lane, Send

Priest-in-charge: Revd Tony Shutt

St Mary's Vicarage, Vicarage Lane, Send, Woking, GU23 7JN

Tel: 01483 222193

Email: vicar@sendparishchurch.co.uk

(I am not normally available on Tuesdays)

Sunday Services (current pattern)

0800 Holy Communion BCP (in church) said
(1st and 3rd Sundays each month)

0900 Holy Communion from the Straw Chapel
(Live on Facebook)

1030 Holy Communion (in church) with music and hymns
followed by refreshments

Baptisms are usually included on the 3rd Sunday of the
month.

We welcome enquiries about marriages, thanksgivings,
memorials, home communions, pastoral visits and other
services.

See the monthly Outlook magazine and our website for full
details and changes. www.sendparishchurch.co.uk

CHURCHES

Parish Church of St. Mary Magdalen, High Street, Ripley

Website: <http://www.ripleychurch.org.uk>

Email: churchwardens@ripleychurch.org.uk

As you may be aware, our long-serving vicar, Rev Chris Elson, retired in August this year. We thank him for many decades of service to this church and this community and wish him a happy retirement.

The process to appoint a new vicar for the parish has started, but realistically it will take several months. As part of this process, we will be asked to describe the 'profile' of the parish for potential applicants. If you would like to know more about this – or to contribute your ideas – then please email us at the above address. We will be keen to hear the views of interested members of the community regardless of church attendance!

We continue to meet every Sunday morning at 10am for a service – everyone is welcome!

The services are led by a mix of visiting vicars and members of the community, depending on the service.

1st and 3rd Sunday of the month: Communion

2nd Sunday of the month: Family service with children's activities

4th Sunday of the month: Service of the Word (traditional but no communion)

Our harvest festival will take place as part of our family service on 9th October – do join us for this seasonal service.

Updates for other seasonal events are published on our website, including a range of Christmas services.

If you are interested in being baptised or married in the church, please email churchwardens@ripleychurch.org.uk. We would love to help organise this with you.

CHURCHES

Send Evangelical Church, Broadmead Road, Send, GU23 7AD

Website – www.sendec.org

Facebook – facebook.com/sendec

Twitter - [@sendevangelical](https://twitter.com/sendevangelical)

Contact Pastor – Pete Killingley – pastor@sendec.org

Assistant Pastor – Kurt Holmgren – youth@sendec.org

Sunday morning service – 10.30am

We meet for morning worship every Sunday from 10.30am. The service lasts from 75-90 minutes, and includes songs (a mixture of old and new), Bible readings, prayers, a kids' talk, and a sermon. Everyone is welcome, whether you've been to church a thousand times or never before! We love having visitors, and over the years, many visitors have become faithful regulars. There is no dress code – you won't be out of place in jeans and t-shirt. We continue to have no COVID restrictions in place. However, some people prefer to sit in our church hall (adjacent building) to watch a live feed of the service, where we encourage people to be socially distanced and wear masks.

We have a Sunday school (Treasure Hunters) which on average runs three Sundays a month during the main morning service – email our assistant pastor Kurt for more details. We also have an informal crèche available in our adjacent hall for those with babies and toddlers. You are welcome to join us for our evening services at 6.30pm which take place most Sundays.

Other activities –

Our toddler group Little Lambs will be restarting on Thursday, 15th September. It is a relaxed group where parents can enjoy refreshments and conversation with other parents while their children have the opportunity to enjoy a wide range of toys and activities, as well as snacks. It runs on Thursday mornings from 10:00 - 11:30 during term time at our church. For more information please email Val at littlelambs@sendec.org.

If you have teenagers, we would love them to join us on Friday evenings from 7.30-9pm, during term-time. We have a lot of fun each week playing a range of games (including table-tennis and pool), eating tasty snacks, taking part in Bible-based group discussions and going on outside trips like bowling, Laser Quest etc. Again, email our pastor Kurt for more info.

Walkfest Walks in September (all welcome!):

Monday 5th – Early evening walk starting at 5:15pm

Wednesday 21st – Morning walk around Send starting at 10am

Saturday 24th – Toddler/Buggy friendly walk 10am

Please email Clive at churchsecretary@sendec.org if you are planning on coming on any of the walks.

Finally, we will have a range of Christmas activities that will take place in December. Further details will be available on our website closer to Christmas.

Send Scouts

What a great term we've had at 1st Send (St Mary's) Scout Group! Having enjoyed a tentative return to near normal last term, we've been full throttle this term, making up for lost time and awarding badges completed at home across all sections, if you've visited the Scout hut recently, you'll have seen the lovely raised beds that the Beavers have been working on. The sunflowers are raising their heads and we can't wait to see them on our return next month to see how tall they've got (both the sunflowers and the Beavers!).

In June, Cubs camped for the first time since covid, at Bentley Copse. We're not sure who had more fun, leaders or Cubs, throwing themselves down zip lines, climbing rocks, go-carting, incinerating burgers over the camp fire ... During the heat wave, the planned end of term picnic on the green was cancelled and the Cubs took to the river, using a variety of resources to transport a poppadom across the river without it getting wet – it took some teams some complicated configurations before they realised the easiest way was to swim, holding it up in the air!

In July, over 5,000 Scouts and Guides and 1,500 leaders from across Surrey gathered for a weekend of activities at the South of England showground, enjoying an incredible weekend of ham radio, climbing, shooting, caving, astronomy, circus skills, abseiling ... the list goes on! Huge thanks to all leaders who gave up their time to accompany the Scouts and ensure they had a good time (again, we think they enjoyed it at least as much as the Scouts!) A few of our troop took part in World Scarf Day on 1st August, with members reflecting on their membership from Cornwall to Send and as far as the States. Our AGM takes place on 22nd September (8pm at the Scout hut) and everyone is welcome. If you have an interest in the group or would like to find out how you can get involved, please come along!

Looking forward to seeing you all at fireworks – 5th November this year!! And a final date for your diary – Lewis, one of our Explorer Scouts, is holding a Quiz 'Night' on 10th September to raise funds for his trip to the 2023 World Jamboree in Korea. The quiz will be in Lancaster Hall at 1pm and all are invited for what will no doubt be a fun and hugely competitive afternoon!

Tony Maine,
Group Scout leader

YOUR VILLAGE NEEDS YOU!

Interested in volunteering for one of the local organisations in and around Ripley?

Want to find out more?

Please come along to our volunteers evening.

Wednesday 7th September 6.30 -8.00pm
at Ripley Cricket Club, refreshments available.

It will be a great opportunity to see how you can get involved. If you already volunteer please come along and share your experience with others.

Ripley Parish Council look forward to seeing you there.

SEND BUSINESS CENTRE

Offices, Storage & Industrial units

to let on **flexible terms**

Friendly family run business

Super Fast 1 GB internet

Waterside views

www.sendbusinesscentre.co.uk

Tel: 01483 225617



First Send guides
Tombola



**the
coffee
& shop**



Everyone Welcome!

3rd Monday of every month • 10am - 12 noon • Church Room, Send



01483 225255

Call between 10am – 12 noon (Monday to Fridays)

How can we help you?

Please contact us if you need help with transport to medical appointments, shopping, prescription collection ...and much more

When you call, the Duty Officer will discuss your needs and then find a volunteer to help you.

Who do we help?

Send Help is available to anyone in the Send area – young or old, new to the village or established residents.

In June we will be celebrating 25 years of helping the local community with a tea party for our clients.

Can you help us?

We cannot run this valuable service without our volunteer drivers and duty officers. The time commitment is entirely up to you and is much appreciated by everyone we help. Just call the number above to find out how you can help.





The Villages
MEDICAL CENTRE

The Villages Medical Centre,

Send Barns Lane,

Send, Woking

Surrey.GU23 7BP

Tel:01483 226330

Fax:01483 225253

www.thevillagesmc.co.uk

BIG FLU DAY IS BACK!!!

Saturday 24th September.

Our Saturday Flu clinics proved to be a big success before the pandemic. So along with our PPG we be holding it again this year. Eligible patients we be able to book ahead for their annual flu vaccination.

From September 1st 2022, you will be able to book your appointment either on-line or by calling the surgery. If you do not have on-line access you can find the form on our website to register for these services. Please complete form and return to reception with a form of ID.

Flu Vaccinations

The flu vaccine provides the best protection against the virus and reduces the severity of symptoms. If you are eligible please support the NHS and The Villages Medical Centre by having your vaccine at the practice.

Eligibility for 2022/23

- Children aged 2 or 3 years on 31st August 2022
- At risk patients from 6 months to less than 65 years
- All patients aged 65 years and above
- All pregnant women
- Those in long stay residential homes
- Carers
- Close contacts of immunocompromised individuals.

Healthy patients aged 50 – 64yrs will be eligible for a vaccine from 15th October 2022.

The below aged children will also be eligible and offered the vaccine through the school service.

- Primary school children ages 4 to 10 on 31st August 2022
- Secondary school aged children

Prescription Requests

If you have requested a repeat prescription please remember to allow a total of 5 working days for it to be ready for collection from Boots pharmacy.

Autumn will be a busy time for the PPG. We will be attending the Ripley Farmers Market on September 10th so please call in and say hello and find out who we are and what we do. We will also be assisting the Practice in the roll out of the annual flu vaccinations at the Practice.

We hope to be able to meet many patients but in the meantime if you need to contact us we can be reached on village-sppg@gmail.com or via our Facebook page Villages Medical Practice Patient Participation Group.

Kate Price
Chair
Villages PPG

**WEDNESDAY COFFEE MORNINGS
IN RIPLEY CHURCH ROOM
FROM 10AM - 12 NOON**



Come and meet your friends and make new ones - enjoy a cup of coffee or tea and a homemade cake.

LIFTS EASILY ARRANGED!



RIPLEY VILLAGE HALL
UPDATE SUMMER 2022

The Trustees are delighted that Phase 1 Victory House is proving very popular since its official opening at the end of April. We have received so many positive comments from villagers and community groups, who have been very complimentary about the new building.

We have had many of our original hirers of the old hall now booking regular slots in Victory House. Currently we only have one community room available for hire as the other room is now housing Ripley Parish Council. Our Parish Clerk Jim is delighted to be back in the centre of the community in a shiny new office.

If you are interested in hiring the hall, please contact Trish at info@ripleyvillagehall.org.uk

The two flats on the first floor were very successfully marketed to our local community by Wills and Smerdon who have been offered us extremely favourable terms for the letting and management. We are very grateful for their continued support and expert professionalism. We wish every happiness to our two new tenants.

The landscaping and estate fencing to the front of the building was undertaken by Countryside Contracts (based in Ripley) who have done a first class job and we thank them for their endeavours.

Financing for Phase 2 (the main hall) has been incredibly convoluted and time consuming over the past six years but we are thrilled to announce that we fully expect that we have finally

secured a further £1.25 million of major funding from both Guildford Borough Council and Surrey County Council to commence and complete the project. HOORAY!!!! A huge thanks to our team of trustees but in particular to the Chairman Gill Haig-Brown who has been an absolute warrior over the past 3 years, working relentlessly on our behalf. We would also like to thank Cllr Colin Cross for helping us get these funding bids over the line.

The next objective is to finalise the details that will enable the project to commence later this year. We would also thank the Parish Council for their foresight and commitment to the PWLB loan which enabled the trustees to build Phase 1 Victory House – this was fairly instrumental in securing further funding for the whole project, as it clearly demonstrated the ability of the trustees to deliver phase 1 and also the desire for the village residents to support the overall project. This has been a massive community effort and we are thankful for all the support we have received over the past few years. Well done all of us!

As you will see when you visit the hall, there is still a large area of land that is sectioned off. This will hopefully deter any unauthorised traveller encampments and this area will remain closed during the next phase of the development. There is ample parking available for our hirers but we would reiterate that this is not a public car park, as there is simply not enough space for local residents to use this parking space,

We will keep you all advised of the building schedule and chosen construction partners.

We would hope to commence work in late 2022/early 2023 with a 12-15 month build.


Suzie Powell- Cullingford
Ripley Village Hall Committee

THE BEAUTY &
SKIN CLINIC

MAIN TREATMENTS INCLUDE:

- LINDA MEREDITH HYDRA FACIALS
- DERMA ROLLER FACIALS/SKIN PEN
 - ELEMIS FACIALS
 - WAXING
- GEL MANI & PEDIS
- BOTOX/FILLERS
 - LASER HAIR REMOVAL
 - 3D LIPO
- CELLULITE TREATMENTS
- SKIN PEELS
- SILK LASH EXTENSIONS
- MAKE UP

**Find us on Ripley High Street,
with free parking**

 [thebeautyandskinc](https://www.instagram.com/thebeautyandskinc)

 [the beauty & skin clinic](https://www.facebook.com/thebeautyandskinc)

www.thebeautyandskinc.com
Ripley High Street, Surrey GU23 6AZ
01483 222022



**DISTILLERS
OF SURREY**



Distillers Of Surrey are a small, family-run distillery based in Ripley, on the picturesque Papercourt Lake.

Why not head on over to the distillery or the online shop to choose from their three award winning gin editions? You can also book in for the popular distillery tours to learn more about the business and the distilling process.

Ripley and Send Matters readers can enjoy 10% off all purchases made at the distillery - just bring this advert along with you at the point of purchase.

www.distillersofsurrey.com

Papercourt Lake, Polesden Lane, Ripley, Surrey, GU23 6JX | 01483 222392





Our monthly market is one of the most popular in Surrey, that's a fact. The market was started back in 2005 because our founder, Sally Erhardt, felt there were two issues that she could maybe do something about. Firstly local shoppers with few options in the village who wanted to support and buy from local traders selling fresh produce that hadn't notched up many food miles. Secondly, the few (at that time) small businesses who were struggling to find a public outlet to sell their produce. Remember the internet wasn't the 'go to' option to find out anything and everything in 2005.

Fast forward well over 15 years and the ethos is still the same today, there are many people who prefer to spend on good quality, local produce that is sustainably farmed, sourced or produced. Farmers' markets are not for everyone, we realise that, but there are an ever-growing number of shoppers who feel strongly that they want to know the provenance of their food. We're proud that we regularly attract well over 1,000 shoppers and about 150 dogs each month. We're very grateful that these shoppers do make that choice and come along to support our monthly market throughout the year.

A little-known fact and one that Sally is reluctant to share! Sally has been awarded a British Empire Medal for her services to food and community this year. This recognises that the market, led by her, has consistently supported hundreds of local farmers and producers since it started and is volunteer-led with all profits, amounting to over £100,000 over those years, directed back into the local community. This includes charities and organisations that support children, mothers, older people, struggling families as well as contributing to local village needs.

Sally has expressed her gratitude for the 'wonderful committee and team of volunteers that make the market possible and the monthly stallholders/shoppers who turn out rain or shine.'

Please keep on coming and tell your friends to support us too!

Diane Cooper - Ripley Farmers' Market committee



"The manager and his staff are endlessly helpful, going the extra mile to provide the best care possible."

"My mother looks forward to her weekly visits by her carer and very much enjoys her company and the stimulation."



SENIORS Helping SENIORS®
...A WAY TO GIVE AND TO RECEIVE™

**5 Star
Customer Rating**

There's a huge difference in the kind of home care you receive from someone who really understands what your life is like. At Seniors Helping Seniors®, care is provided by someone experienced and who has a little living under their belt.

Contact Tim or Rachel on 01483 416653
tim@seniorshelpingseniors.co.uk · rachel@seniorshelpingseniors.co.uk
www.seniorshelpingseniors.co.uk



COMPANIONSHIP · MEAL PREPARATION · SHOPPING · TRANSPORTATION · DEMENTIA CARE
MEDICAL APPOINTMENT · HOLIDAYS & OVERNIGHTS · MAINTENANCE & REPAIRS
RESPIRE CARE · HOUSEKEEPING & LAUNDRY · GARDENING · PET CARE

FIELDVIEW TAILORING

**Derek Hack
Tailor**

**01483 224164
3.Prews Cottages,
Tannery Lane, Send.**



**Phone for an appointment
For all your clothing alterations**



BROADWAY·BARN

www.broadwaybarn.com

01483 223200

Luxury Self-Catering and Bed & Breakfast



Extra special places to stay in the Village of Ripley

- Broadway Barn Grade II Listed 5-Star Gold Bed & Breakfast – Ensuite Bedrooms
- Broadway Cottage 4-Star – Bedroom, Bathroom, Sitting Room, Kitchen, Patio
- Broadway Villa 5-Star Gold – 3 Ensuite Bedrooms, Sitting Room, Kitchen




Your Trusted Local Accountants

Hookins Accountants is a family run firm based in Ripley, Surrey, providing all aspects of accountancy and bookkeeping services.

Our Services:

- Business Tax
- Bookkeeping
- Company Accounts
- CIS
- Payroll
- VAT Returns

Get in touch with us today for more information:

 www.hookinsaccountants.com  peter@hookinsaccountants.com  01483 211 985



Dunsborough Park

AUTUMN GARDEN OPEN DAYS 2022
13 - 30 September
(Sundays and Mondays closed).

Online bookings only. Now live at www.dunsboroughpark.com.

Any enquiries by email please to;
events@dunsboroughpark.com

Entrance will be via Newark Lane, Ripley – Sat Nav Ref GU23 6BZ

Come and enjoy lovely autumn colours and dazzling dahlias!

We look forward to seeing you in the garden!

RIPLEY GOOD NEIGHBOURS



OPEN
MONDAY TO FRIDAY
10 A.M. - 12 NOON

01483 210007

WHAT DO WE DO?

We aim to offer any support a good neighbour might offer.

For example: Help with transport, shopping, collecting prescriptions, dog walking, and any other odd job, within reason!

WHO CAN USE RIPLEY GOOD NEIGHBOURS?

Anyone in the Ripley area - young and old alike. But please try to give us as much notice as possible so we can find a volunteer to help.

WHAT DO YOU HAVE TO DO?

Ring 01483 210007 and leave your name and telephone number. The Duty Officer will contact you as soon as possible during opening hours

When you speak to the Duty Officer just explain what help you need and when you need it. We will then try to find a volunteer and then let you know if we have found someone to help

WHAT DOES IT COST?

Help is free but if you can make a donation to help with transport costs we would appreciate it.

WOULD YOU LIKE TO BE A VOLUNTEER?



Just call 01483 210007 and we will give you details. Being on the list commits you to nothing as you can always say no if helping is inconvenient.

**SEND AND RIPLEY HISTORY
SOCIETY**

Come and learn about the huge army camp in Send, the Frenchman that was the head of the British army, the birth of cricket in Ripley, the heyday of the coaching trade and the visit of the renowned artist Turner and more all in one tiny museum. Hardly seems possible!

Many thanks Clare

SEND AND RIPLEY HISTORY SOCIETY
A new exhibition
at
RIPLEY MUSEUM
GEORGIAN SEND & RIPLEY
AN AGE OF CHANGE



JULY 2022
Until OCTOBER 2022
EVERY SATURDAY MORNING
10-12
or by appt. call Clare
01483 726546
The museum is behind the
new Ripley Village Hall
GU23 6AF
www.sendandripleyhistorysociety.co.uk

Meets on the fourth Thursday of the month from September to May at 20h00. £3 for non-members except where otherwise stated. See our website wsnhs.wordpress.com

22 September 2022 in WEST Horsley Village Hall KT24 6DD
(new venue)

Caring Fish, Uncaring Fish – an illustrated talk by Dr Jonathan Green, University of Oxford. Did it ever occur to you that fish might have different parenting characteristics? Dr Green has broad interests in the evolution of social behaviour and is particularly interested in how animals in social groups gather and use information to resolve conflict and promote cooperation. Part of his work has been on evolutionary interactions between parental care, mate choice and competition in fish so his talk will combine natural history with some of his current research.

27 October 2022 on Zoom

Wintering: a season with geese – an illustrated talk by Stephen Rutt

Stephen Rutt is a writer and amateur naturalist, specialising in creative non-fiction prose and birds. Stephen and his partner live near the Solway Firth in Dumfries, an area where thousands of pink-footed geese arrive on the Firth from the Arctic Circle to make it their winter home. The arrival of huge flocks of geese in the UK is one of the most evocative and powerful harbingers of winter; His book, Wintering was one of The Times's best nature books of the year for 2019. His writing has been published in The Guardian and The Scotsman.

24 November 2022 in East Horsley Village Hall (but check website to confirm)

Return of the greater horseshoe bat – illustrated talk by Martyn Phillis of the Sussex Bat Group Greater Horseshoe Project



RIPLEY Diary of Events

2022

Church Services are on the Church pages

September

3rd	Sat 2.30pm	Over 60's	Ripley School
Every	Weds 10-12	Coffee Morning	Church Rooms
10th	Sat 9-1	Surrey Artisans Farmers Market	Ripley Green
16th	Thurs 7pm	Parish Council	

October

1st	Sat 2.30pm	Over 60's	Ripley School
Every	Weds 10-12	Coffee Morning	Church Rooms
8th	Sat 9-1	Farmers Market	Ripley Green
21st	Thurs 7.00pm	Parish Council	Victory House

November

5th	Sat 2.30pm	Over 60's	Ripley School
Every	Weds 10-12	Coffee Morning	Church Rooms
12th	Sat 9-1	Farmers Market	Ripley Green
19th	Thurs 7.30pm	Parish Council	

G A R D E N S C A P E



- * Small family business
- * Garden Design
- * Specialising in Soft Landscaping and Shrubs
- * Maintenance
- * Turfing/Lawn Care
- * Lady gardeners available



All your gardening needs catered for

For an immediate response call - 07770 933764

33 Culverlands Crescent, Ash, Gu12 6TD

Wills & Smerdon 1933

Sales | Lettings | Management

Thinking of moving or just wish to get an idea of the value of your home? Then please contact Gary for a FREE market appraisal from the property experts in your local community



T | 01483 224 343

W | willsandsmerdon.co.uk

E | ripley@willsandsmerdon.co.uk

P | Aberdeen House, High Street, Ripley, GU23 6AQ

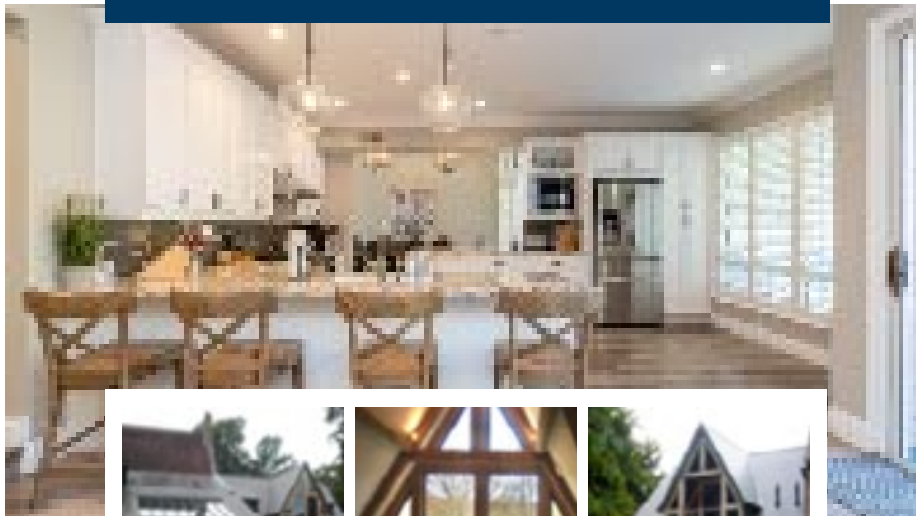


Jubilee Celebrations in Send and Ripley





THINKING OF EXTENDING YOUR HOME?



CIM SERVICES: HOME DESIGN WITH YOU IN MIND

Architecture and Project Co-ordination

Architectural Practice based in Send, near Guildford. Specialising in creative architectural design and experienced in planning and building construction.

Whether you would like to extend your property, convert your loft or garage or develop a plot of land, we can help you get approval from your Local Planning Authority. We can advise you about the maximum development options to increase the value of your home and we will create a functional, aesthetic, practical and cost effective plan for your budget.

FREE INITIAL SITE VISIT AND CONSULTATION

For more information get in touch

info@cimservices.co.uk
www.cimservices.co.uk
07977 071456

SEND Diary of Events



Church services are on the Church pages

September

7th	Wed 2.30pm	Over 60's	Church rooms
19th	Mon 10.00am	Charity Shop/Coffee Morning	Church Rooms
28th.	Wed 2-4	Craft and Chat	Church Rooms

October

5th	Wed 2.30pm	Over 60's	Church Rooms
21st	Mon 10.00am	Charity Shop/Coffee Morning	Church Rooms
26th	Wed 2-4	Craft & Chat	Church Rooms

November

9th	Wed 2.30pm	Over 60's	Church Rooms
21st	Mon 10.00am	Charity Shop/Coffee Morning	Church Rooms
30th	Wed 2-4	Craft & Chat	Church Rooms

Send Marsh Celebrations



C. F. Hall & Co. Ltd.

We are your local Euronics electrical retailer,
established for more than 60 years.



Sony, Panasonic, Bosch, Samsung, Miele, Roberts, Sebo,
Toshiba, Dyson, Pure, Zanussi, Blomberg & many more top brands

2 Station Approach | East Horsley | 01483 282945
www.cfhall.com

Alan Greenwood & Sons

Independent Family Funeral Directors



A choice of the latest Jaguar or Mercedes
Hearses and Limousines
Home visit arrangements
Pre-paid funeral plans and Memorials
Caring and Compassionate 24 hour Service
We will not be beaten on price
Direct Cremation Funerals £950 plus £1500

2 Aldershot Road
Guildford
GU2 8AF

01483 567 845

66 Send Road
Send
GU23 7EU

01483 210 222

1 Anchor Hill
Knaphill
GU21 2HL

01483 487 889

Please Visit Our Website for Full Details of Our Branches and Services and to View Our Local Obituaries

www.alangreenwoodfunerals.com

RIPLEY AND DISTRICT HORTICULTURAL SOCIETY

Members have enjoyed visiting local gardens in Ripley and an NGS garden in Ockham, during June and July. For the first time this year we included a skills workshop with a garden visit. A chance for us all to learn something new.

At the time of writing we are due to have our ANNUAL SHOW on Saturday, 27th August. We welcome visitors in the afternoon and I do hope you went along to see the wonderful display of entries.

COACH TRIP TO KEW GARDENS

Wednesday 28th September. This is open to non-members for a charge of £33. Do get in touch if you are interested. Kew is awkward to get to whether by car or public transport so being driven by coach and dropped at the admission gate makes it easy!

RIPLEY FARMERS' MARKET

Saturday 8th October. We will again have a stall and will be serving home-made soup and, hopefully, will have local produce available.

SPEAKER TALK

Monday, 17th October 8pm at the Church Room, Ripley. Cherrill Sands will be giving us a talk entitled 'Tulips and Turbans' which tells the story of how the tulip came to Europe. Cherrill has given talks to us in the past and they are always very interesting. Non-members are welcome, £3 on the door.

We are a friendly group who enjoy learning more about plants, sharing knowledge and visiting gardens. We have Speaker Meetings and an Annual Show. For more information about Ripley & District Horticultural Society, please contact us directly or visit the Ripley & Send Matters website.

Jenny Milligan
225073 or jennifermilligan@btinternet.com

Membership Secretary: Jan Jewers 07894 574302 or
janjewers@gmail.com

Get Creative

Get Creative 2022 will be held on Saturday 29 October at the Lancaster Hall, Send from 10:00am to 3:00pm.

This has now become an annual event following its success in 2019 and 2021.

This year we will be including more stalls and more opportunities to learn creative skills from the exhibitors.

Admission is free but donations would be appreciated as all proceeds will go to the Rotary Club of Ripley & Send who will in turn make donations to local charities and organisations.

Come and see/ try your hand at:

- Lino prints
- Painting
- Taxidermy
- Wood Turning
- Knitting
- Fused Glass
- Beeswax Soap and candles
- Jewellery
- Felt Work
- Pottery
- Ceramics
- Embroidery

There will also be refreshments and a raffle.

If you are interested in more information please email sendartsandcrafts@gmail.com



- Commercial Property Agents •
 - Surveyors and Valuers •
 - Development Consultants •
- Land and Planning Consultants •
 - Property Managers •

(Residential inc. block management and Commercial)

Contact : Andrew Russell Bsc [Hons] MRICS Director
Email: andy@gascoignes.com

2 Gillingham House - Pannells Court - Guildford - Surrey - GU1 4EU

AGENCY • PROFESSIONAL • LAND • MANAGEMENT



It is now the new Rotary year and time to review some of our activities from the last twelve months.

During the year we have donated nearly £10,000 to local charities and organisations. This includes the installation of two defibrillators in Send and training 70 local people in their use. We plan to repeat these free first aid courses in October, so please let me know if you are interested in attending.

Together with Send Scouts we organised the very successful Send Jubilee Fair on the Recreation Ground with a record attendance. Our thanks to all the local organisations who supported this event, especially Send Parish Council.

In addition we organised many fund raising events to enable us to make so many generous donations.

In October we are again sponsoring Send Get Creative.

Our twin club from Confolens, France are planning to visit us later this year.

Last year we were able to run our very popular Santa house-to-house collections. Our thanks to all those who helped collect. This activity is not possible without the help of our volunteers. We look forward to being able to do this again in December. If you are interested in any of our Rotary activities and would like to know more please contact me at gillcolbeck@aol.com.

Gill Colbeck
President
Ripley & Send Rotary Club



Fully qualified hairdresser and barber with 22 years of experience, comes to you, so you can relax in the comfort of your own home.

Please feel free to contact Monica on 07851727665 for your free initial consultation.

Also please visit www.maknhairstyle.com for wedding hair and makeup.



HOEBRIDGE CARS
PRIVATE HIRE

YOUR LOCAL CAB

Cars are cleaned between each and every journey.
Masks must be worn for your own protection.

07825 159 225
e: info@hoebridgecars.com
w: www.hoebridgecars.com

PROTECTING YOUR INTERESTS

ENGLAND • PALMER




SOLICITORS
Senior Partner
ADRIAN CHARLES
ENGLAND
Mobile no.
07977410588

Commercial Services

- Litigation • Leases
- Employment Law • Conveyancing

Private Services

- Conveyancing • Civil Litigation • Wills & Probate
- Divorce & Family Matters • Motoring Offences
- Debt collection

Why Call England Palmer?

- Immediacy of Response • Constant Communication
- Experienced in Commercial Law
- Professional, Cost Effective Service

Guildford
01483 459161

England Palmer Solicitors
60 Chertsey Street,
Guildford,
Surrey

www.EnglandPalmer.com

www.EnglandPalmer.co.uk



Ripley Bonfire Association are pleased to announce that this year's celebrations will take place on the village green on Saturday 29th October 2022.

At this year's event, as in previous years, you will see our Huge Bonfire, Fantastic Firework Display, Mammoth Funfair, Refreshing Licenced Bar and many Delicious Food Concessions, so please put a note in your diary and join in what has become a Legendary night in the history of our village. As you are aware the last two year's celebrations were cancelled due to the Covid-19 Pandemic. In 2020 we had no choice in the cancellation, due to being in lockdown (again) and in 2021, whilst some events were starting to take place around the UK, the Committee made the difficult decision in cancelling the event, as it was felt that it would be wrong to proceed, with a potential 10,000 people coming into our small village, with no controls and at a time when we were still in a crisis, with many people still suffering and a Nation still wearing face masks and trying to social distance. Yes, a difficult decision but hopefully the responsible decision. At the end of 2021 and with the National Inoculation programme under way the committee met once again, to look at the future of our village Bonfire Celebrations and following a unanimous decision it was agreed that we would start to put arrangements into place for 2022. It was also at this meeting that our long standing Chairman Vernon Wood and committee member Zelda Witten, decided to stand down after many years of devoted service.

With a new Chairman in place, who had previously been voted in by the committee, a presentation at the Cricket Club in early January of parting gifts was made to our outgoing committee members, with Vernon taking on the Honorary role of 'Association Ambassador' and Zelda the role of 'Association Archivist'. With the decision having been made to proceed with this year's event the committee have been working extremely hard. One thing that has been identified is that the Pandemic has accelerated us (yes, even in Ripley) towards a cash-less society, for which, when you consider that as a free event our main source of income has always been the street collection, this could cause us a financial problem, especially as it seems every aspect of our expenditure from Fireworks to First Aid and Insurance to Toilets has risen considerably this year.

As a result of the need to ensure our street collection delivers the much needed funds, which are essential for the future of our annual celebrations, several of our committee met with the Ripley Rocks Committee, for which I am pleased to confirm we now have in place a joint initiative regarding portable card readers, which hopefully will benefit both groups. If anyone is interested in assisting with the street collection, either cash or card collection, please contact Peter Hookins, our Vice Chairman (peter@hookins.f9.co.uk), as any assistance on the night, short or long, would be greatly appreciated.

Finally, as Chairman, I would like to thank the new members that have recently joined the committee and ask if anyone else has a bit of time, large or small, either prior to the night with the building of the bonfire, or on the actual night, with essential marshalling or other duties, then please contact myself (stephenphill@btinternet.com). We are purely a voluntary organisation and many hands make light work.

See you all on Saturday 29th October, 2022 and let's do what Ripley does best and enjoy ourselves!

Kind Regards, Steve Hill

SEND GARDENING SOCIETY

At our meeting on Wednesday 1st June, Carol Gubler gave a very interesting and enjoyable talk on fuchsias. Talking without slides, Carol covered many aspects of fuchsias, from cutting and growing hints, fuchsia colours, shapes and structures, hardiness, soil preferences and pests. Carol brought many specimen plants and flower heads to pass around to illustrate her talk. It was easy to become inspired with Carol's passion and enthusiasm for this flower.

On Friday 3rd June, the Society had a stall at the Send Jubilee Fair celebrating the Queen's Jubilee. It was wonderful to see the recreation ground come alive following the covid restrictions of the previous years. The recreation ground was buzzing with residents, families and friends enjoying the atmosphere and bringing the community together. Thank you to everyone who came over and said hello and bought plants or tickets for our hamper raffle.

It is clear from the number of plants sold and advice given that there are plenty of residents who enjoy gardening. Would you like to meet up once



CompletelyPC
Home & small business computer support

Home visiting computer repair & installation service
Help with all your screens and buttons.
Virus removal and protection
Broadband issues (including phoning your supplier!)
iPads, tablets and phones
Wireless printing
Help with choosing new equipment
Set up of new equipment including transfer of data etc.
Safe removal and disposal of obsolete equipment.

£60 per hour

Jon Kincaid
01483 856015 or 07941 695817
jon@completelypconline.com
online booking: <https://completelypc.youcanbook.me>



Bring a little luxury into your home

For all your **Soft Furnishings**:
“Made to Measure” Curtains, Cushions,
Blinds, etc.
Alterations and Repairs undertaken

Friendly, reliable service
For help, advice and Free estimates
Call **Julie** on **01483 223871**

or
07792 211093
email: sales@thesilkroom.co.uk

The Silk Room

3 Cobham Cottages, High Street, Ripley

every 2 months with fellow 'gardeners' for a sociable and interesting evening out? We are looking for new members to join our society. We are a friendly bunch of amateurs who are always learning about gardening in all its forms and sharing local knowledge. Whether you have a window box or a vast area of land, please come and join us and share our passion. Club membership is neither expensive nor in any sense exclusive (£5 per person or £8 per household per year).

On 22nd Weds June the society visited Little Brook Fuchsia Nursery in Hampshire. Carol explained the history of the nursery, started by her father in the 1970's. We were given a tour of the facilities, including the green-houses where Carol keeps her stock plants and brings on cuttings, prepares pots, baskets and standards, and rooted plants for sale. The tour also included the remainder of her 2-acre woodland style garden where we were treated to tea and biscuits. A very enjoyable afternoon.

In August we shall be meeting in a member's garden for our annual summer picnic. A chance to relax and appreciate the planting and outlook of a fellow gardener's endeavours.

In September a visit to RHS Wisley is being planned to include a 'behind the scenes' tour of the new Hilltop area.

Our Autumn meeting in October will be a workshop where we will be making wreaths. Further details will be circulated to members and displayed on the usual notice boards around Send.

Our 2022 Program for the remainder of the year is as follows:

Wednesday 3rd August:	Garden Picnic for members.
Last week of September.	Visit to RHS Wisley
Wednesday 5th October	Wreath workshop
Wednesday 7th December	AGM followed by Christmas Party and Quiz activities.

We can be reached by e-mail at sendgardeningassoc@btinternet.com, by phone on 01483 223952 (Chairman Robert Harding-Payne) or by coming along to one of our bi-monthly meetings which are at 7:30pm in the Church Rooms. We now even have a page on Facebook! Our meetings are open to visitors and our members are a broad spectrum from experienced to novice. We are known as a very friendly club and look forward to welcoming new members. So do come along and see what we are about – Linda Davis Committee Member.

"Live in each season as it passes; breathe the air, drink the drink, taste the fruit, and resign yourself to the influence of the earth."



RIPLEY SCHOOL

We wanted to keep you in touch with further developments arising from the temporary use of the school for special education needs (SEN provision) commencing in September, and the campaign to object to the Guildford Diocese's application for the Section 554 Order (which would allow the Diocese to control the running of the school site). While the deadline for comments on the Section 554 application has passed, we have been informed by the Department for Education (DfE) that the current political changes in Westminster mean that a decision will not be made until after the summer recess (September 2022). Obviously we are disappointed at the delay but we were very pleased to hear that more than 400 responses from local residents were received by the DfE and we thank you for your support in helping us to make the case for continued educational use of the site. We will keep you updated as soon as we hear more.

Meanwhile we have been progressing arrangements with Surrey County Council for the school site to be ready for use by approximately 40 year 7 and 8 pupils from Matthew Arnold School for the next two years, commencing September 2022. This includes new fencing, replacing external units and upgrading internal rooms – plus ensuring we can safely store equipment and resources that may be needed for a future primary school. We see this as an opportunity to ensure the school site remains well maintained and, importantly, available to be used for the longer term once the SEN arrangements are concluded.

The Site Trustees have worked hard to ensure that community groups and regular hirers are still able to use the site after school and weekends during term-time and during the school holidays. The Friends of Ripley and Site Trustees will continue to oversee the management of the site (at least until any decision is made by the DfE).

Contacts

For enquiries regarding hire of the school contact please contact: admin@rip-leyschooltrust.org.uk

For further information about the SEN provision please visit www.matthew-arnold.surrey.sch.uk

We hope that, should the outcome of the Section 554 application be in the Diocese's favour, the Diocese would honour the arrangements made by the Site Trustees – allowing for the temporary provision of SEN on the site as well as continued community use.

We will endeavour to update you as soon as we know more, but please be assured that whatever the outcome, we will continue to fight to save our village school site and to bring local primary education back to our village.

Thank you, once again, for your support.

A.C.K.

Automotive
Services

www.ackservices.co.uk



Tel. 01483 225373

- ✓ Vehicle Servicing
- ✓ All Makes of Cars & Vans
- ✓ MOT Test – Petrol/Diesel
- ✓ **FREE** Loan Cars (by arrangement)
- ✓ Full Bosch Diagnostic Equipment
- ✓ Fully Equipped Workshop
- ✓ Auto Electrical Service
- ✓ **FREE** Air-Conditioning Check
- ✓ Exhausts, Tyres & Batteries
- ✓ 4 Wheel Alignment Service using Hunter laser alignment equipment



10% DISCOUNT
On production of this advert

VISIT OUR WEBSITE AT
www.ackservices.co.uk
ack.eyes@btconnect.com



Portsmouth Road, Ripley, Surrey GU23 6EY

Contact Peter Eyles on 01483 225373

JB MOTORS

01483 222207

Your local garage with reliable, friendly service

Services include:



Servicing & Repairs
to all makes



Latest computer
diagnostic methods



Tyres, exhausts
and batteries



Air conditioning
servicing



Car valeting
service



New and used
car sales



92 Send Road, Send, Woking, Surrey GU23 7EZ

Email davidjbmotors@btconnect.com




www.jbmotorsmini.co.uk



Exceptional Live-in Care from dedicated people.

Our Live-In team are cooks, carers, companions and housekeepers all rolled into one.

**Call us today
to find out more.**

-  Fully qualified care professionals matched to your needs and preferences
-  One to one support to maintain your independence at home
-  Simple transparent pricing, easily arranged care

Call: 01483 343 693

www.cphcare.co.uk

Down Your Wey

This summer has already thrown me a few curve balls. The hot, dry weather has made for some unusual weir activity or inactivity. Those of you who regularly cross the bridge at Walsham will have noticed the wooden boards between the bays. In times of low rainfall, I can add summer boards to keep levels up in the Navigation. For the first 6 or 7 years I never had to use any of them. In the last few years, I have had to put 4 boards in for short periods of time each summer. This year we have actually had to make new ones. I'm sure by the time you are reading this we will be sick of the rain, like every 'normal' summer.

The Environment Agency also been supporting our team efforts and making substantial in roads into the floating pennywort. It's one of the plants that does enjoy the conditions, although to be fair, it's not really fussy. It's been happy here but this year between us we are managing to keep it at bay.

The dry spell has slowed and confused the vegetation, as I'm sure you have all noticed. The grass has slowed right down and even the nettles are struggling. On the plus side, as I fractured my ankle and have had to spend a considerable time off my feet, I couldn't have timed it better. I have been very gratefully relying on my number one volunteer and colleagues to hold the fort, which they have done admirably. I can't thank them enough.

Emma Goodwin
07786 703834
Emma.goodwin@nationaltrust.org.uk



It would be difficult not to echo Emma and comment on this exceptional dry spell we have been having. The water levels are remarkably staying near the centre of my marker board despite no meaningful rainfall for several months. It has pushed many plants to seed quite quickly and stunted growth in all but the aquatic plants. Even some of the heavily water reliant trees such as willow are getting brittle and suffering from snapped limbs. A small benefit from the lack of rainfall has meant that little soils has washed into the river and so the clarity is as good as it gets. On the canal sections on a sunny day you can almost see the riverbed across the entire width and all the submerged plant life and young fish. A beautiful insight into the underwater life of the Wey which is usually hidden.

It has been a hectic few months as we welcomed the birth of our son Sammy at the beginning of June. An exciting time for us both and we looking forward to him growing up on the river and being surrounded by nature. I'm very grateful to my volunteers for supporting me at this time to keep on top of the river. We had a very productive day near Send Business Centre clearing around the footbridge and along the towpath and giving the bridge a fresh coat of paint. At Triggs Lock we have been doing some pruning and hedge-cutting and finished off the lock painting. Over the remainder of the summer I shall be continuing to cut back some the towpath where it has become overgrown and keeping visitor moorings and locksides tidy and if the weather continues to be kind then maybe some more bridge painting. Hope you enjoy the sunshine and see you out on the river.

Chris Charman

07786 703833

Chris.charman1@nationaltrust.org.uk



SEND OPEN GARDENS



DPM CARPENTRY CARPENTER & JOINER



- Kitchens (New & Refit)
- Wood & UPVC Ext Doors
- Interior Doors
- Wardrobes & Cupboards
- Wood Flooring
- Gates (Bespoke) & Fencing
- Sheds, Decking & Pergolas
- All Aspects of Carpentry & General Property Maintenance
- References & Testimonials Available
- Fully Insured
- Free Estimates

Contact **DARREN**

01483 222128 07879230344
darren@dpmcarpentry.co.uk

K.Warren

General Builder & Plasterer
All aspects of building and plastering undertaken from small rooms to extensions.

References available



Tel 01483 479370
07814 361260

Aldridge Ironing Service

*Great rates
Established 1999
Regular or one off
Excellent references
24hr/48hr turnaround
Free local collection and delivery*

Please see our website for prices and info



www.aldridgeironing.co.uk

01463 210229
aldridgeironing@gmail.com

Donner Optometrists

Home Or Away
Protect & See Better

Sunglasses From £59

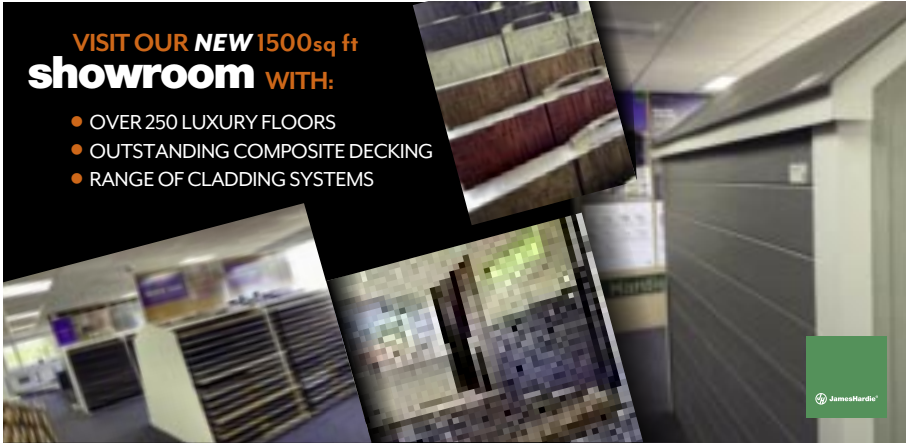


9 Church Road, Bookham, Surrey KT23 3PD
T: 01372 458318
E: bookham@donneroptometrists.co.uk

Ripley Business Association

Our first Ripley Parish day took place on Sunday the 24th of July, so we could test the water and see how much of an appetite their was for it. With over 300 attendees throughout the day, it was a cracking start. The superb live music by Sultana fro free, entertained everyone throughout the day, filled in by some chilled tunes from Scott Hutchinson Ripleys very own DJ! Thank you to all the volunteers, contributors and stall holders who took part. Save the date for a bigger and better event next year! Sunday 23rd July 2023! Sign up for newsletter for more www.discoverripley.co.uk.





VISIT OUR NEW 1500sq ft showroom WITH:

- OVER 250 LUXURY FLOORS
- OUTSTANDING COMPOSITE DECKING
- RANGE OF CLADDING SYSTEMS

Your local Independent Builders Merchants

CALL 01483 921040 **EMAIL** sales@alfiambuildingsupplies.co.uk

OPEN Mon - Fri 7.00am to 17.00pm - Sat 8.00am to 12.00pm

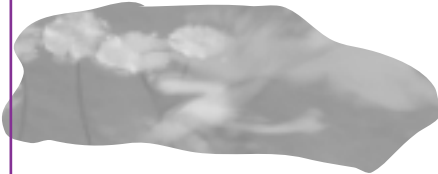
WWW.ALFIAMBUILDINGSUPPLIES.CO.UK



VISIT TODAY Unit A, Burnt Common Distribution Centre, London Rd, Send, Surrey, GU23 7LN

DAVID SMITHERS POND MAINTENANCE & CONSTRUCTION

ALL ASPECTS UNDERTAKEN, INCLUDING COMPLETE DRAIN-DOWN, CLEANING, PLANTING AND REPAIRS TO PONDS OF ANY SIZE.



TO ARRANGE A FREE ESTIMATE PHONE

**01483 374620 (EVENINGS)
07732 541057 (MOBILE)**

Send Electrical Services

At Send Electrical Services we offer a full range of domestic electrical services provided by our fully qualified Electricians.

Work we frequently carry out includes:

- Kitchens and Extensions
- New Builds
- Rewires and refurbishment
- Fuse board changes
- Additional electric points
- Garden & outside lighting
- TV, telephone & network cabling
- Boiler & control wiring
- Burglar & smoke alarm systems
- Testing & inspection

Tel: **0800 689 0017**
Email: info@sendelectrical.co.uk
www.sendelectrical.co.uk

ZOEY HACKNEY

PROFESSIONAL PAINTING & DECORATING

Qualified and fully insured

- Local recommendations
- Free, no obligation quotations
- Reliable, skilled, friendly

30 GROVE HEATH NORTH • RIPLEY • WOKING • SURREY • GU236EN

TEL: 01483 222830 • MOB: 07721 455554 • EMAIL: ZOEYHACKNEY@BTINTERNET.COM

F & S Heating and Plumbing Services

01483 225385 or 07711 191585



Small family run business
Call Frank or Suzanne

Central heating

Boiler servicing, repairs and replacement

Cooker, hobs and fires

Landlord Certifications

Bathroom installation/refurbishment



2008



Email: info@fshps.co.uk

www.fshps.co.uk

23 Stringham Copse, Sand Marsh, Ripley, Surrey, GU24 6JE

Guildford Fuchsia Group

We are always wanting to recruit new members who are interested in all forms of gardening. Although we try to promote growing the fuchsia, we have a varied programme throughout the year to cater for all interests. We are affiliated to both the British Fuchsia Society and the RHS.

We meet at the Guide HQ in Nightingale Road, Guildford, which has its own car park, on the fourth Tuesday of each month(not December) at 7.45pm. Currently our annual membership fee is £10 per year plus £2 each meeting attended(includes refreshments).

At the present moment we are meeting on a casual basis until into the New Year, but then we hope to meet regularly and get a programme organised.

Further information from our website www.guildfordfuchsia.co.uk or direct from our treasurer (see inside back cover) or email enquiries@guildfordfuchsia.co.uk

Ripley Over Sixties Club

Ripley Over 60's will be meeting again every first Saturday of the month throughout the year.

We will now be meeting at Ripley Primary School at the usual time of 2.30pm. We have a full programme of entertainers for the year.

It will be lovely to see old friends once again or any new members. We are also looking for a new chairperson. Please contact Edna to apply and for any queries.

Edna Millis, Chairman

01483 225483

SEND OVER 60'S CLUB

The Send Over Sixties are pleased to say we are up and running again, anyone interested in joining us is very welcome to come along, we usually have a speaker, raffle, bring & buy, tea & cakes & chat. We meet every second Wednesday in the month at the Church Rooms, Send, why not come along and join us.

Sally Legerton, Chairman - 01483 223542.

-

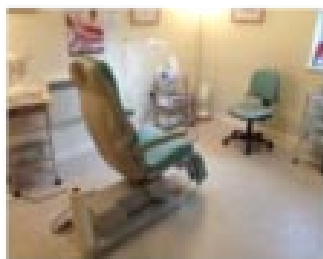
Woking Chiropody and
Foot Health Practice Limited

01483 833078
info@wokingfeet.co.uk



SURGERY AND VISITING PRACTICE

78 Westfield Road
Woking
Surrey
GU22 9NG



Call 01483 833078 for an appointment – opening hours Monday-Friday 9am – 7pm

Rosalie Bennett MScCh MBChA
(HCPC Registered)

Richard Bennett BA (Hons)
MCFHP MAFHP



Muddy Paws

Dog Grooming

Merriat Wood trained dog groomer,
located in Sand Marsh

Providing a safe and comfortable environment
to give your dog an enjoyable grooming experience

Bath & Blowdry, Full Groom, Hand Strip, Nail Trim
Rescue Dogs Welcomed

Call or text Kim on
0788 237 2120

muddypawsgrooming@icloud.com

@SandMarshGrooming @muddypaws grooming service



Send Evening WI

We meet on the 4th Wednesday of the month, 8pm, at the Church Rooms in Send. The monthly meetings are always interesting and on many varied topics.

We also have coffee mornings, rambling group, book club, theatre trips and outings to places of interest. You will find us a very friendly group so if you are new to the area or looking for a new interest or to meet new people - do give us a try.

Contact Judy on 0792 6049255 or Jenny on 07906747344



Ockham & Ripley WI

We meet on the 1st Wednesday of each month at Ripley Bowls Club, Rose Lane at 7.45 and close at about 9.45 after a light super. We have a varied and interesting programme each month, also a yearly Warner break, book club, film afternoons, theatre trips, crafting, rambling and visit places of interest. We are a small friendly group. If you are looking to join a WI come along and meet us. For further details contact Lesley 01483 225125 or Lynne 01737 214805.

Autumn & Winter Bedding Plants

**Ripley Nurseries
Farm Shop**

01483 225090



www.RipleyNurseries.co.uk



SEND VILLAGE CLUB

Send Village Club (Send Social & Ex-Servicemens Club)

The Committee have been busy organising events for the year, we have already had our Easter Raffle and fun and games for our younger members, some of you may have seen us in the recreation ground celebrating the Jubilee with a tombola stall and the very popular Smash Crockery Stall. We were pleased once again to be able to make a donation from the smash crockery to the Debra Charity Shop who kindly saved their unwanted china for us.

We continued to celebrate the Jubilee weekend back at the club having a games night including darts, pool, hoopla, jenga, table skittles to name a few, we had drinks priced at a crown during the evening and music. We are very fortunate to have some talented members who gave their time and put together a band to entertain us with a variety of songs, we would like to thank Michael, Martin, John, Rob and Georgia 'The Band With No Name' absolutely brilliant night very entertaining and enjoyed by everyone there, so popular they want you back!

We are continuing to put together events for our members. Our regular bingo is popular on the first Saturday of each month. We are hoping to have a summer disco night, a quiz night and live music in December.

Well done to all the players of the dart teams, some great results for Send this season, we look forward to the season restarting at the end of summer.

At the time of writing we once again have had new members who have not paid their subs! Yes the blue tit returned to nest and we have had a hedgehog scurrying through the leaves around the building, it is great to see the wildlife returning.

Finally thank you to all our members who continue to support our efforts and use the premises. The Committee are a voice for every member and are always happy to receive ideas, comments and help. For information on memberships, opening times and future events please check our noticeboard, Facebook or Instagram.



Dale Barratt MCFHP, MAFHP Foot Health Practitioner

01483 479350 / 07931313875

I am a foot health practitioner, and treat the following:

- * Corns and Callus
- * Fungal Nail Infections
- * Ingrown and Involuted Nails
- * Care of the Diabetic and High Risk Foot
- * Athletes Foot
- * Specialised Nail Cutting
- * General Foot Maintenance

If I can be of any assistance, please call for an appointment



SOLICITORS



hlewis@arthurlegal.co.uk



Tel: 01483 222499

Fax: 01483 222766

Web: annaarthur.com

ANNA ARTHUR & ASSOCIATES SOLICITORS
FIERI, FACIAS HOUSE, HIGH STREET
RIPLEY, SURREY, GU23 6AF

Divorce & Separation
Child Contact & Finances
Co-Habitation Agreements
Residential Conveyancing
Company Matters
Commercial Property
Wills, Probate & Trusts
Lasting Powers of Attorney

By Appointment Only
There is office parking
(By Prior Arrangement)

Send Open Gardens Feedback

As you will have seen in my editorial, the Send open gardens event was a real success. The feedback here speaks for itself!

'From St Mary's Church Send: We offer you and the Open Gardens organisers our sincere gratitude for all your joint efforts in arranging the successful and beautiful events of last weekend. On behalf of the Parish Church I can say with confidence that we felt privileged to be chosen for support, enjoyed taking part, and are delighted that people variously showed such affection and generosity towards St Mary's Church. We are very grateful for the money that was raised and donated to the church. We look forward to participating again to support other community groups!' Tony Schutt

'It was such a fantastic weekend; I bumped into so many friends I hadn't seen in ages and it has inspired me to take part next year!'

'Councillors thought it was brilliantly organised and was enjoyed by many a visitor. I have been asked to give the Council's thanks to you and your fellow open gardeners for planning and delivering the event. It was a credit to you all....thank you!! We hope it will carry on next year'. Cllr Phil Beddoes.

DOG DAY CARE CENTRE RIPLEY AND OCKHAM

Dog Days Adventure has two countryside sites, one in Ripley and the other in Ockham. Both provide secure and fully-fenced fields for piece of mind. Activities include structured games, walks, swimming in an adjacent lake with like-minded doggy pals, or just relaxing with company, quite simply, an oasis of fun for dogs.

PICK UP/DROP OFF SERVICE :
East Molesey, Esher, Claygate, Thames Ditton, Surbiton, Kingston, Ripley, Hersham, Walton on Thames, Weybridge, New Malden, Send, Surbiton, Oxshott, Cobham, Woking, East and West Horsley and Ockham.

Please call us for an appointment on:
07557 797917

Find us on :   





Voo Veterinary Group

Voo Vets Ripley
The Old Saddlery, High Street,
Ripley, Surrey GU23 6AN
Tel: 01483 222212
24hr Emergencies: 07714 295844

Helping you and your pets live life to the full...

As a family owned and run group with an established local history, we are friendly, caring and approachable. We love looking after the local pet community, and take a great deal of pride in being able to make a difference to you and your pets.

Our Ripley practice offers consulting and minor procedures, with surgeries and diagnostics performed by the same team at our Cobham and (new) Pyrford Practices. Complimentary transport is available, if needed. Our hospital in Surbiton provides support for more complex cases, specialist and 24hr emergency services. Our hospital team provides 24hr care, so your pet will stay with us until they are better, and well enough to return home.

We offer a wide range of services including:

- Free 2nd Opinions
- Free Health Checks
- Affordable Healthcare Plans
- Free advice and support in choosing a pet to join your family
- Headstart for puppies and kittens (everything you need up to 6 months, including free, unlimited consultations, for just £139)

For **25% off** your first treatment please quote: **VOOMATTERS25**

Please see our website for more details, or pop in to meet our team. We'd love to see you!



Follow us on social media to be kept up to date with news and events

Send Organisations

Advanced Motorists Local Group	John Panting 07999 338616
Conservative Association	Alex Stewart Clark.....07710485264
Horsley & Send Cricket Club	www.horsleyandsendcc.co.uk.....285322
Lancaster Hall Bookings	lancasterhallsend@gmail.com
Mothers Union Send	Beth Shutt222193
Over 60's	Sally Legerton.....223542
Parish Council	Nichola Mair.....479312
Rotary Club	Gill Colbeck.....762076
SADS	Caroline Croucher..... 07887521684
Send & Ripley History Society	helena_findenbrowne@compuserve.com
Send Evangelical Church	Pete Killingley(use code.....)01483 728633
Little Lambs Toddler Group	littl lambs@sendec.org.....
Send Gardening Society	Robert Harding Payne.....223952
Send Scouts	Tony Maine.....sendgsl@yahoo.com
Send Get Creative Linda Parker Picken	lparkerpicken@Yahoo.com.....
Send WI	Judy on 0792 6049255.....
Send Arts & Crafts	sendartsandcrafts@gmail.com.....
Send Guides	Nadine Gibson....SendGuides@gmail.com
Brownies	Sally Daboo....sallydaboo@hotmail.com
Rainbows	Vanessa Gough.....01372 375198
Send Help225255

Disclaimer: In no event shall Ripley & Send Community Publishing Association (R&SCPA) be liable for any special, direct, indirect, consequential, or incidental damages or any damages whatsoever, whether in an action of contract, negligence or other tort, arising out of or in connection with the use of the Service or Products of the Advertisers. R&SCPA accepts the advertisements in good faith and does not endorse any Service or Product provided by the Advertisers.

Ripley Organisations

Advanced Motorists local group	John Panting.....07999 338616
Bonfire Association	Steve Hill07774 177771
Cricket Club	Steven Cliff.....225512
Elmbridge Model Club	Tony Handley07876 030930
Farmers Market	Sally Erhardt223861
Christmas Fair	Jim Morris.....224847
Fuchsia Group	Jean Denness.....07867 564090
Horticultural Society	Jenny Milligan 225073
Over 60's Club	Edna Millis225483
Papercourt Sailing Club	info@papercourt-sc.org.uk or 223904
Parish Council - Parish Clerk	Jim Morris 224847
Probus Club	Les Brown223024
Ripley Bowls Club	John Phillips..... 225437
Ripley Pre-school 223230
Ripley Munchkins,Mums & Toddlers	Marsha Davies.....07943 644460
Rotary Club	Gill Colbeck.....762076
Royal British Legion Social Club 224616
Scout Group: Chairman	Mark Galpin...chairman@ripleyscouts.org.uk
Group Scout Leader	Kevin Yeo.....gsl@ripleyscouts.org.uk
Cubs	Sarah Harrison.....csl@ripleyscouts.org.uk
Beavers	Justine Ayears.....bsl@ripleyscouts.org.uk
Scout marquee hiremarquee @ripleyscouts.org.uk
Scout hall hirehall hire @ripleyscouts.org.uk
Send & Ripley History Society	Helena Finden-Browne helena_findenbrowne@compuserve.com
Village Hall Bookings	Trish White 0774 8531275
West Surrey Nat. History Society	Liz Kingston.....emkingston@btinternet.com
Ripley Good Neighbours 01483 210007

Realism QUALITY Seymours
Customer Service Professionalism
5 star! Great advertising
Recommend
first class Estate agents
Happy fantastic Send Market
Exceeded expectations leader
Seek them out Knowledgeable

Our reviews **speak** for themselves...

All of the words above were used by our community to describe our team and our services. If you are thinking of selling your home, choose an agent your community trusts, **Seymours**.

Ripley

188 High St, Ripley, GU23 6BD

Tel: 01483 211644

seymours-estates.co.uk



Seymours

Your property partner for life